

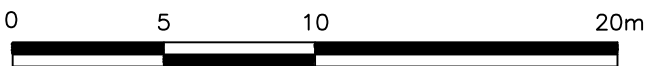
STRATA PLAN OF LOT A,  
DISTRICT LOT 135, GROUP 1,  
NEW WESTMINSTER DISTRICT,  
PLAN EPP48315

SHEET 1 OF 4 SHEETS

STRATA PLAN EPS2582

BCGS:92G026  
(City of Burnaby)

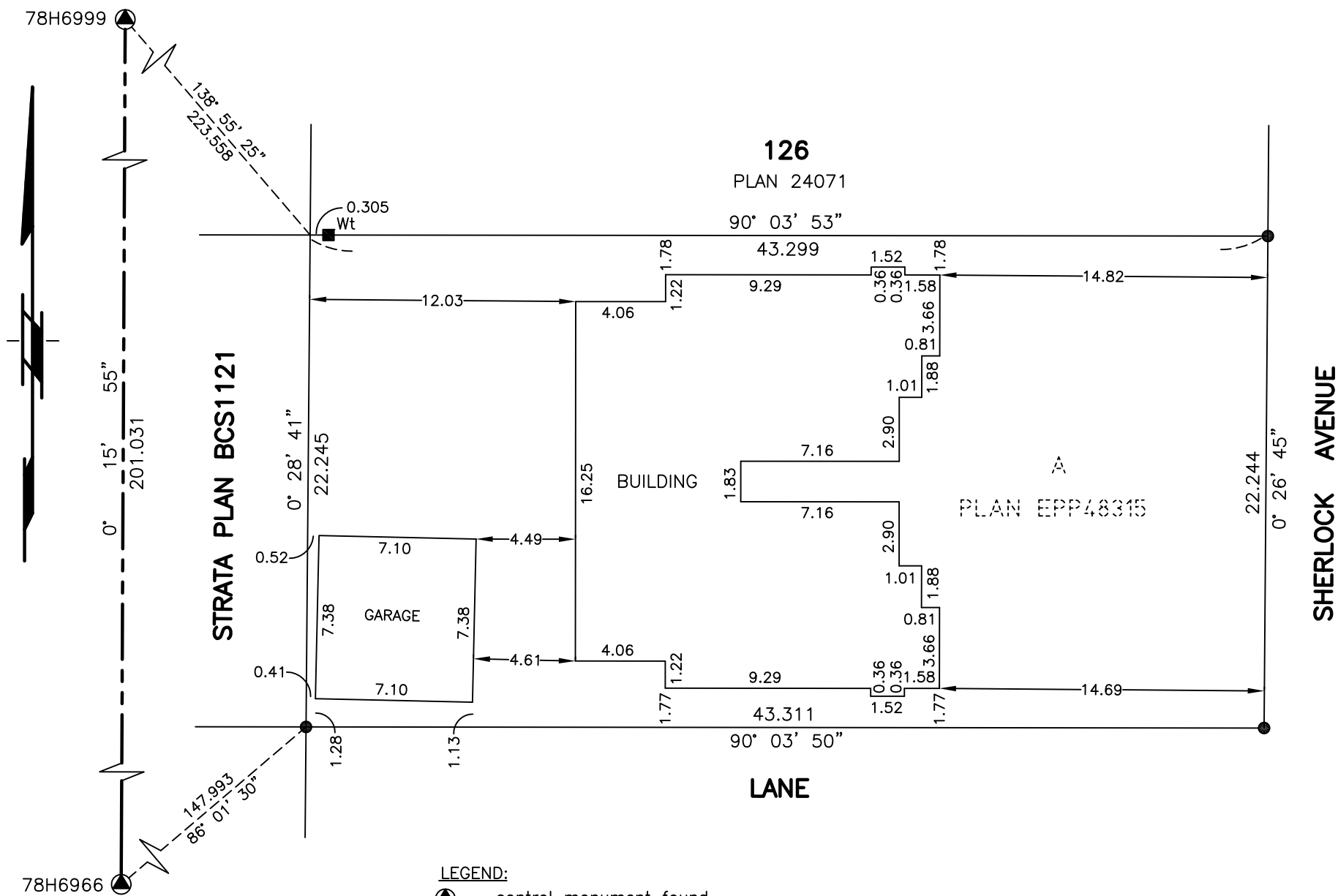
Civic Address:  
1591 Sherlock Avenue  
1593 Sherlock Avenue  
Burnaby, B.C.



All distances are in metres and decimals  
thereof unless otherwise indicated

The intended plot size of this plan is 280mm  
in width by 432mm in height (sheet size B)  
when plotted at a scale of 1:250.

UTM ZONE 10 COORDINATES  
DATUM: NAD83(CSRS)4.0.0.BC.1.GVRD  
NORTHING 5457648.794  
EASTING 502979.752  
POINT COMBINED FACTOR: 0.9995888  
ESTIMATED HORIZONTAL  
POSITIONAL ACCURACY: ±0.01m



UTM ZONE 10 COORDINATES  
DATUM: NAD83(CSRS)4.0.0.BC.1.GVRD  
NORTHING 5457447.848  
EASTING 502978.822  
POINT COMBINED FACTOR: 0.9995891  
ESTIMATED HORIZONTAL  
POSITIONAL ACCURACY: ±0.01m

- LEGEND:**
- control monument found
  - standard iron post found
  - lead plug found
  - Wt witness

Note: This plan shows one or more  
witness posts which are not set on  
the true corner(s).

The buildings shown on this strata plan are  
within the external boundaries of the land  
that is the subject of the strata plan.

The buildings included in this strata plan  
have not been previously occupied.

- LEGEND:**
- L.C.P. denotes limited common property
  - C.P. denotes common property
  - PT.S.L. denotes part strata lot
  - S.L. denotes strata lot

Ken K. Wong and Associates  
Canada and B.C. Land Surveyors  
5624 E. Hastings Street  
Burnaby, B.C. V5B 1R4  
Telephone: 294-8881  
Fax: 294-0625  
150008  
FB918 P70-71  
R-10638  
SI-4612, M-13813A  
Drawn by: RH

Integrated Survey Area No. 25, Burnaby  
NAD83 (CSRS), 4.0.0.BC.1.GVRD  
Grid bearings are derived from observations between  
geodetic control monuments 78H6966 and 78H6999.  
The UTM coordinates and estimated horizontal positional  
accuracy achieved have been derived from conventional survey  
observations to control monuments 78H6966 and 78H6999.  
This plan shows horizontal ground-level distances unless  
otherwise specified. To compute grid distances, multiply  
ground-level distances by the average combined factor of  
0.99958895 which has been derived from control monuments  
78H6966 and 78H6999.

The field survey represented by this plan was  
completed on the 28th day of February, 2015.  
Mark John Russell Dailey, B.C.L.S. 867

DIAGRAMMATIC ELEVATIONS

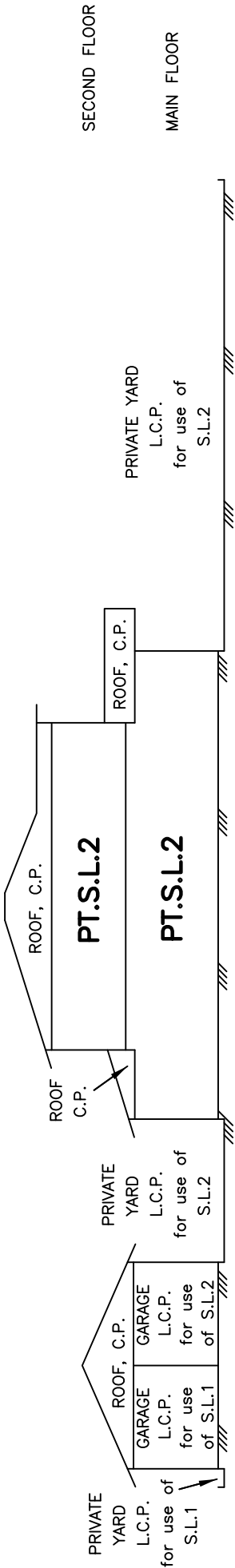
STRATA PLAN EPS2582



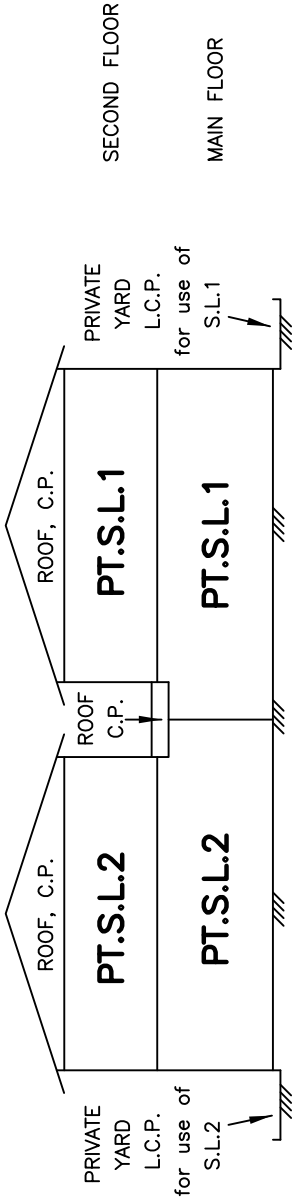
All distances are in metres and decimals thereof unless otherwise indicated

The intended plot size of this plan is 280mm in width by 432mm in height (sheet size B) when plotted at a scale of 1:200.

SECTION A-A



SECTION B-B



MAIN FLOOR

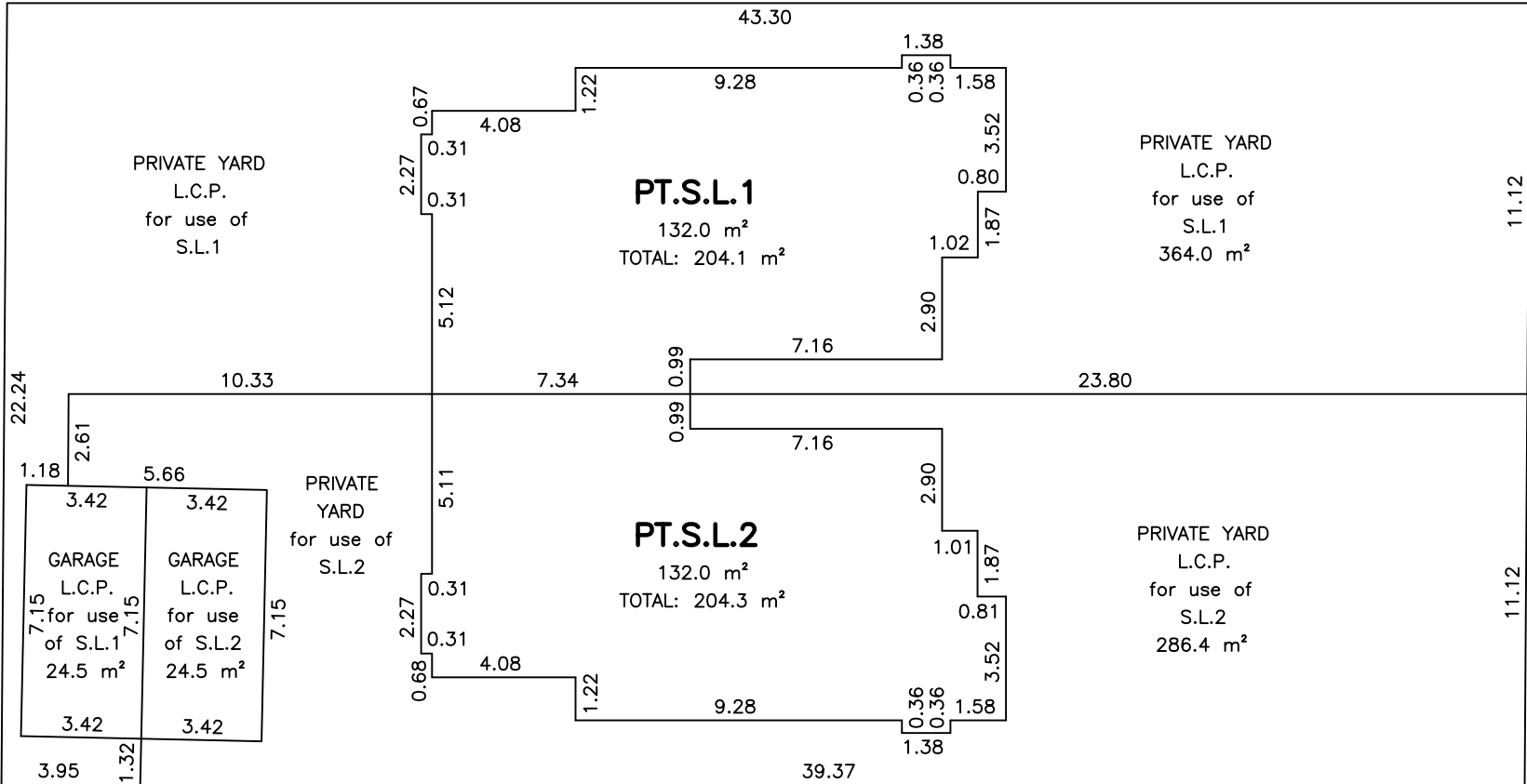
PART STRATA LOTS 1 AND 2

STRATA PLAN EPS2582



All distances are in metres and decimals thereof unless otherwise indicated

The intended plot size of this plan is 280mm in width by 432mm in height (sheet size B) when plotted at a scale of 1:200.



SECOND FLOOR

PART STRATA LOTS 1 AND 2

STRATA PLAN EPS2582



All distances are in metres and decimals thereof unless otherwise indicated

The intended plot size of this plan is 280mm in width by 432mm in height (sheet size B) when plotted at a scale of 1:200.

