

1649 SOUTHWEST MARINE DRIVE

VANCOUVER, BC

MAIN	1,493 SQ.FT.	COACH LOWER	564 SQ.FT.
UPPER	918 SQ.FT.	COACH UPPER	261 SQ.FT.
TOTAL	2,411 SQ.FT.	TOTAL	825 SQ.FT.
UNFINISHED	40 SQ.FT.	GARAGE	240 SQ.FT.
TOTAL AREA	2,451 SQ.FT.	BALCONY	102 SQ.FT.
		DECK	169 SQ.FT.
		TOTAL	511 SQ.FT.
		TOTAL AREA	1,336 SQ.FT.

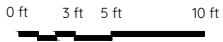
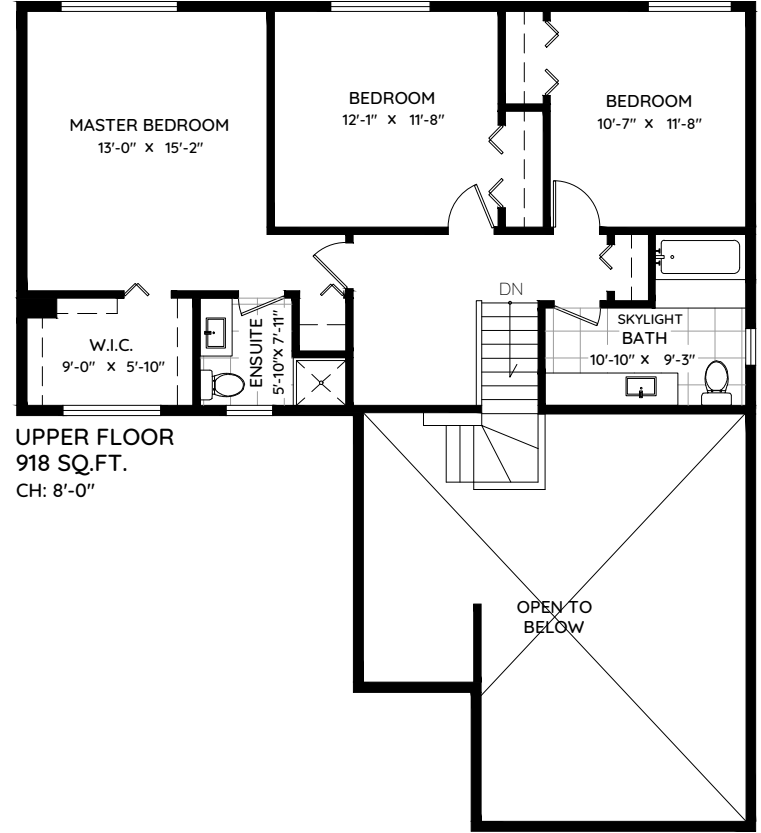
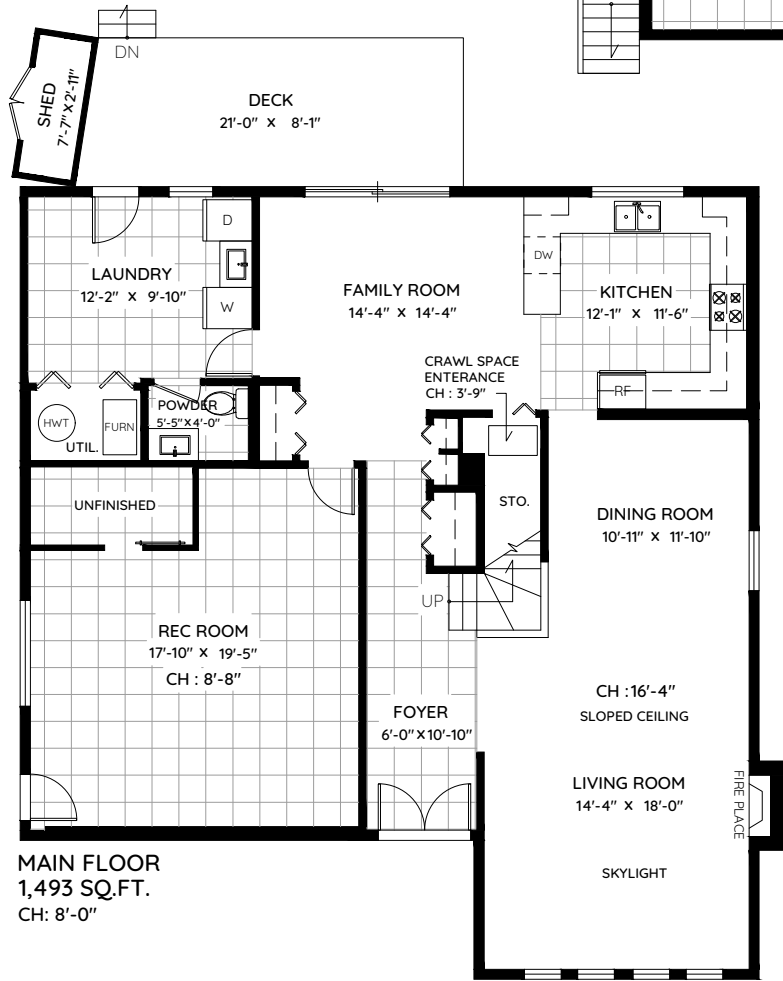
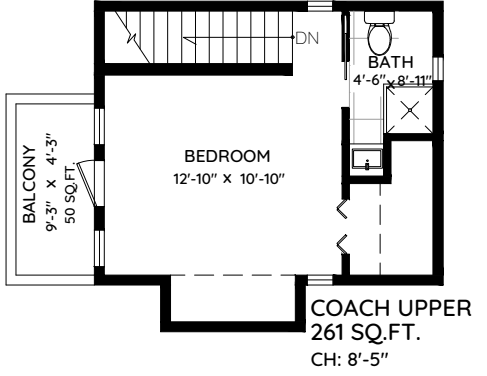
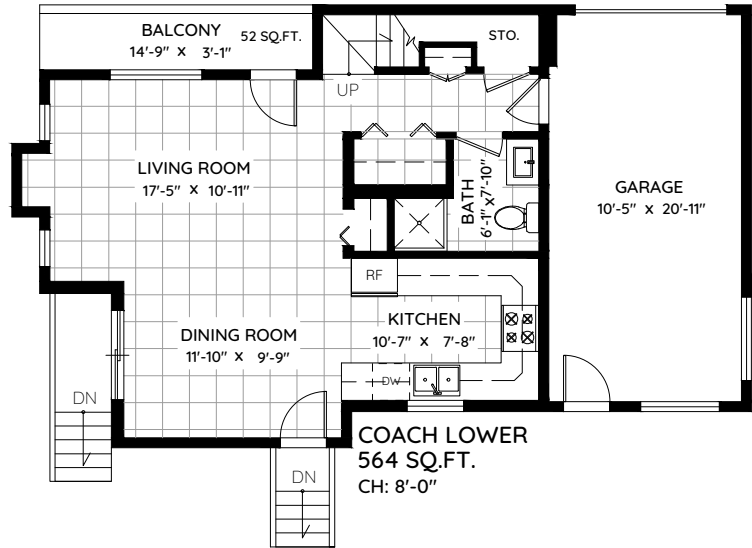
TERRY VATO

604.729.0728 · TERRYVATO.COM

JIM CHANG

604.443.2211 · JIMCHANG.COM

OVER 50 YEARS OF AWARD WINNING HOME SALES



The floor plan and the measurements are approximate and are to be used for advertising usage only. Not suitable for architectural or construction. E&O Insured

