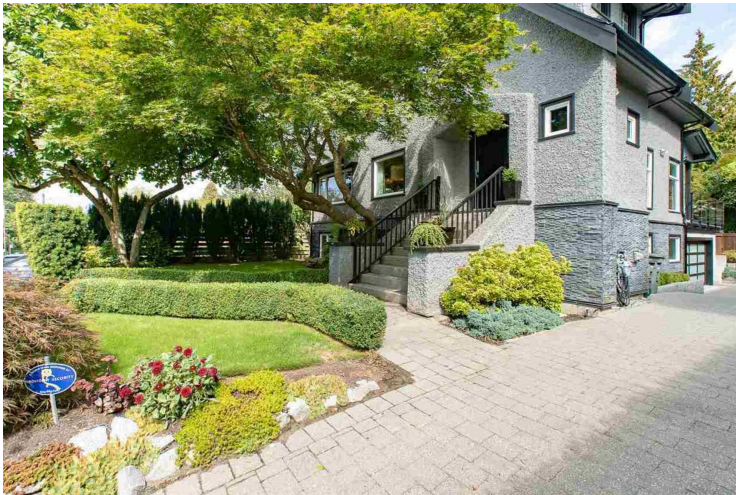


Anna Santillan
Phone: 604-982-6918
Mobile: 639173035356
Fax:
Email: asantillan@ubertor.com

homer street
Vancouver, BC
VAN D1L

4942 PINE CRESCENT Quilchena, Vancouver West, BC, V6M 3P6, Canada

MLS®# R2301522



Property Value	\$4,498,000
Type	House
Style	2 Storey with basement
Basement	Full
Year Built	1928
Taxes	\$12,190.81
Living Area	3,620 sq.ft.
Lot Frontage	55 ft
Lot Depth	126 ft
Lot Size Area	6,930 sq.ft.
Bedrooms	5
Bathrooms	3 full & 1 half

Description

Substantially rebuilt, this beautiful modern home w/ a few nods to the traditional, could be yours...The large 55' x 126' lot sits high up w/ NW views across Quilchena Park to see mountains & water. The main floor features LR & DR w/ a contemporary fireplace seen at eye level when seated. This connects to a spacious large open plan kitchen, eating area, family room all w/ eclipse doors to the expansive deck w/ fire pit, outdoor eating. Off the deck is a gardener's sunny paradise! Upstairs: two great kids bedrooms, one w/ a 4 piece bath plus the Master Bedroom has lovely vaulted ceilings, sky lights, a walk in closet & a dreamy 4 piece ensuite. Down has a rec room, office/bed, bedroom, mudroom, laundry & storage. AC & wired for sound.

