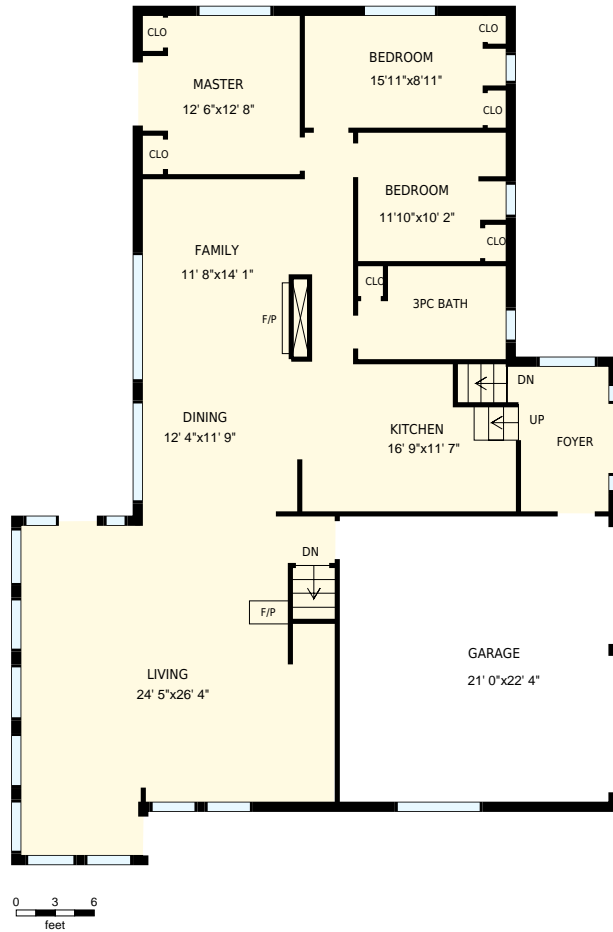


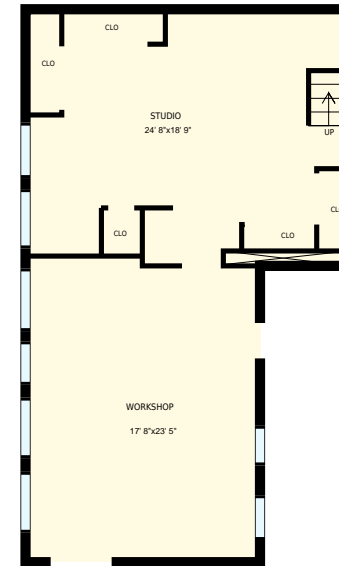


1095 N Waseosa Lake Rd, Huntsville, ON

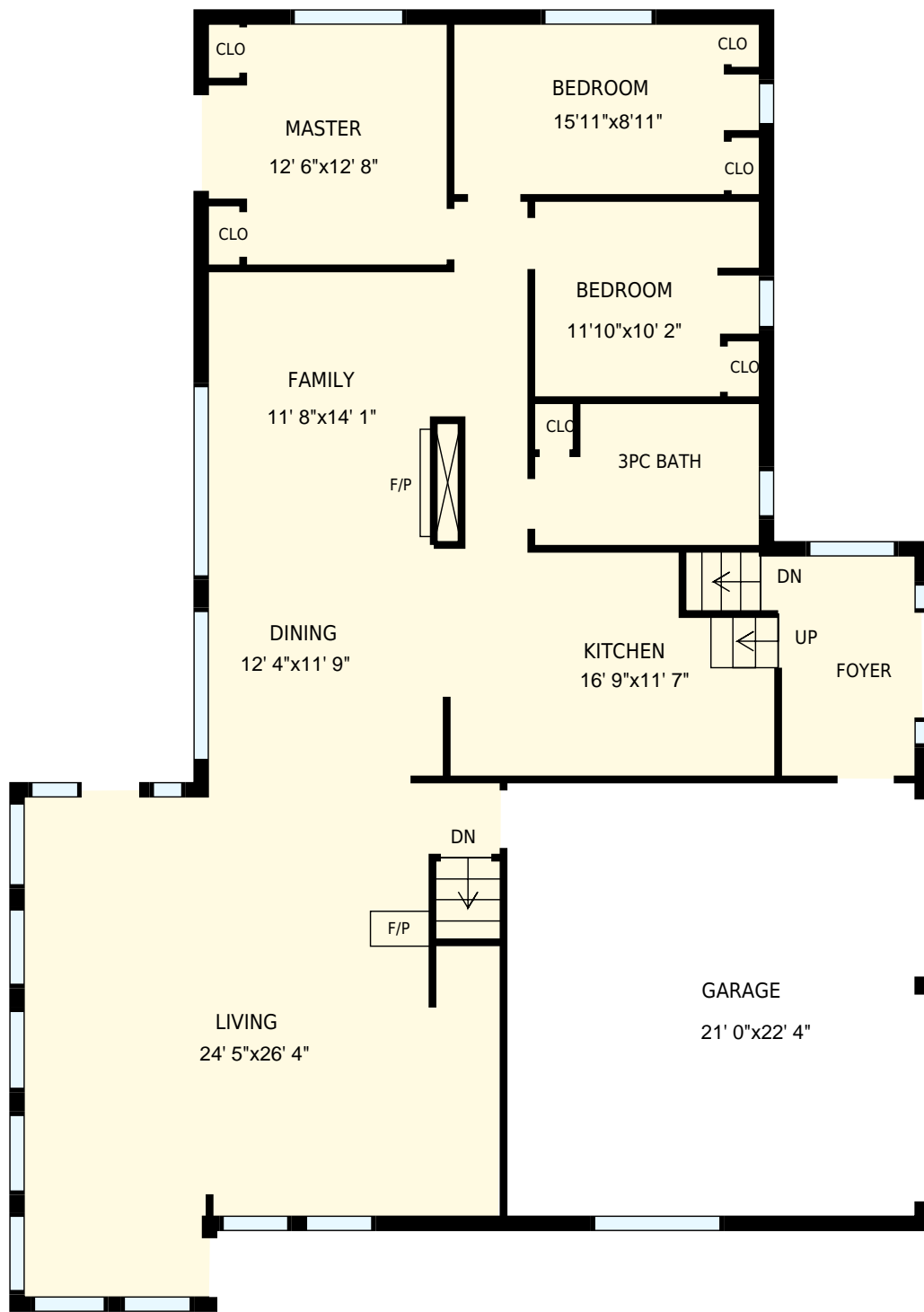
Total Exterior Area Above Grade 1884 sq. ft.



Main floor
Exterior Area 1884 sq. ft.



Basement
Exterior Area 961 sq. ft.



1095 N Waseosa Lake Rd, Huntsville, ON

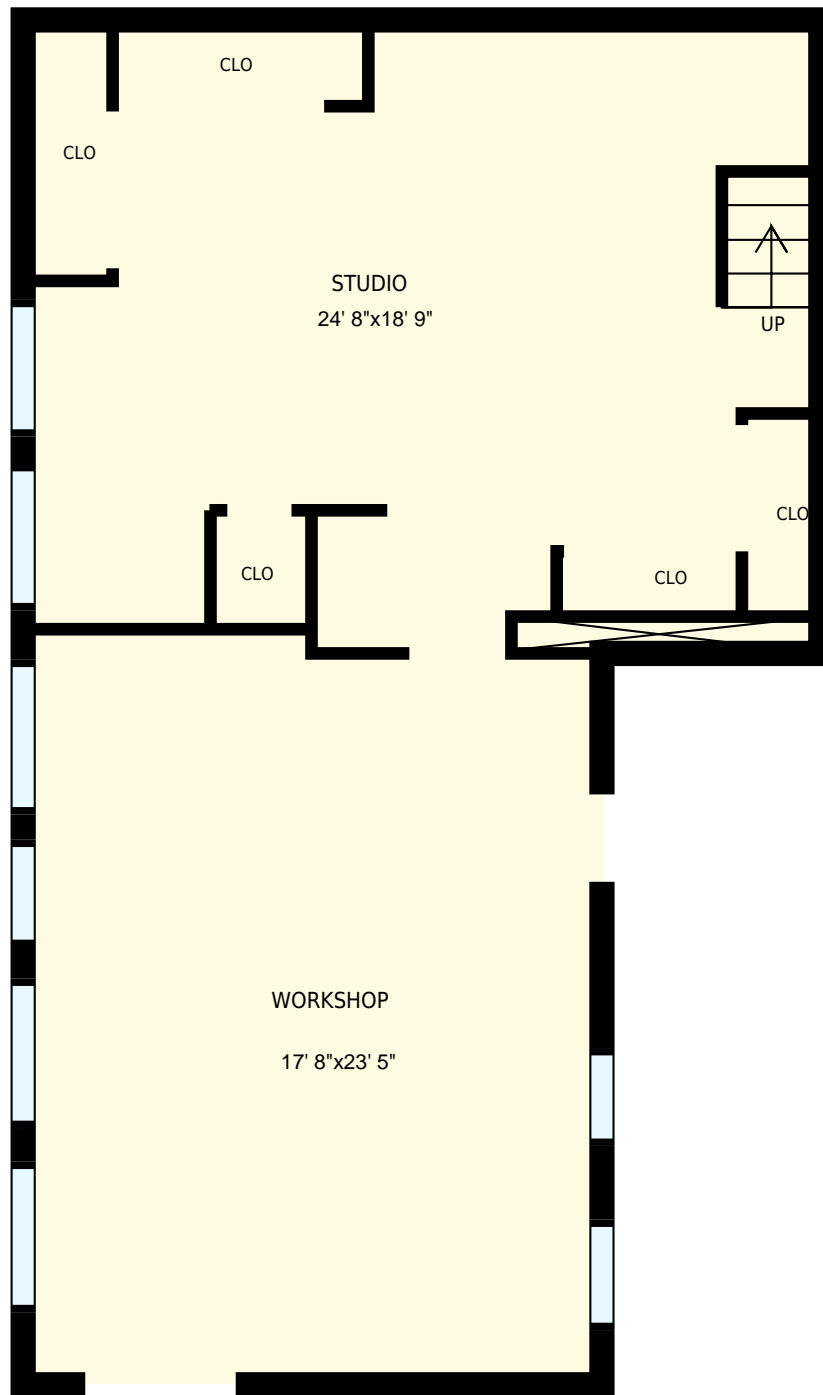
PREPARED FOR:
Susan Brown
Broker
Chestnut Park Real Estate Limited, Brokerage

Main floor

Interior Area 1739 sq. ft.
Exterior Area 1884 sq. ft. Included Area

PREPARED ON:
Sep, 2017

All room dimensions and floor areas must be considered approximate and are subject to independent verification. For method of measurement please see <https://youriguide.com/measure/>.



1095 N Waseosa Lake Rd, Huntsville, ON Basement		PREPARED FOR: Susan Brown Broker Chestnut Park Real Estate Limited, Brokerage
Interior Area Exterior Area	874 sq. ft. 961 sq. ft.	PREPARED ON: Sep, 2017
All room dimensions and floor areas must be considered approximate and are subject to independent verification. For method of measurement please see https://youriguide.com/measure/ .		

Included Area