

Shaz Karim

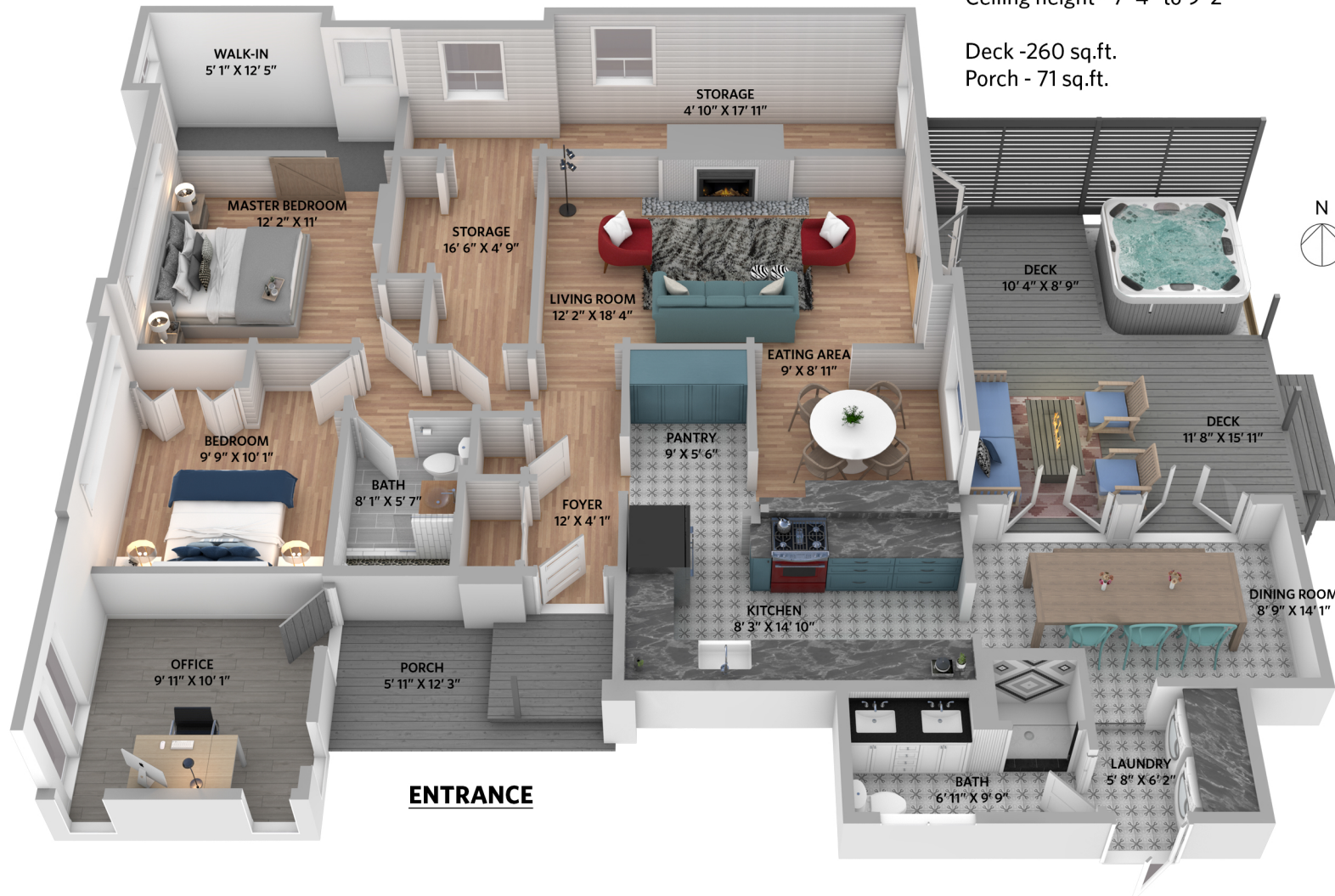
Personal Real Estate Corporation

604.649.1494 skarim@sothebysrealty.ca

www.sohoproperties.ca

1336 Duncan Drive, Tsawwassen

3 bedrooms + 2 bathrooms



Main Floor - 1,643 sq.ft.

Ceiling height - 7' 4" to 9' 2"

Deck -260 sq.ft.

Porch - 71 sq.ft.



www.OPTIMUMFLOORPLANS.com 2D & 3D Floor Plans 604-729-5033



Floor plan measurements, dimensions, square footage, existing structures & features are approximations and for illustrative purposes only. We make no guarantee, warranrepresentation, expressed or implied, as to the accuracy and completeness of this rendering. Independent verification is recommended. E&O Insured for \$1,000,000