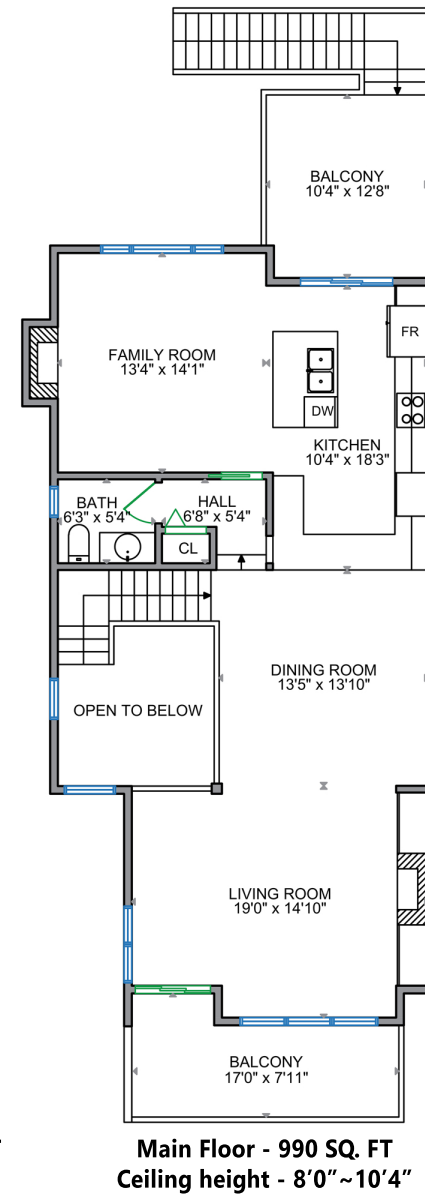
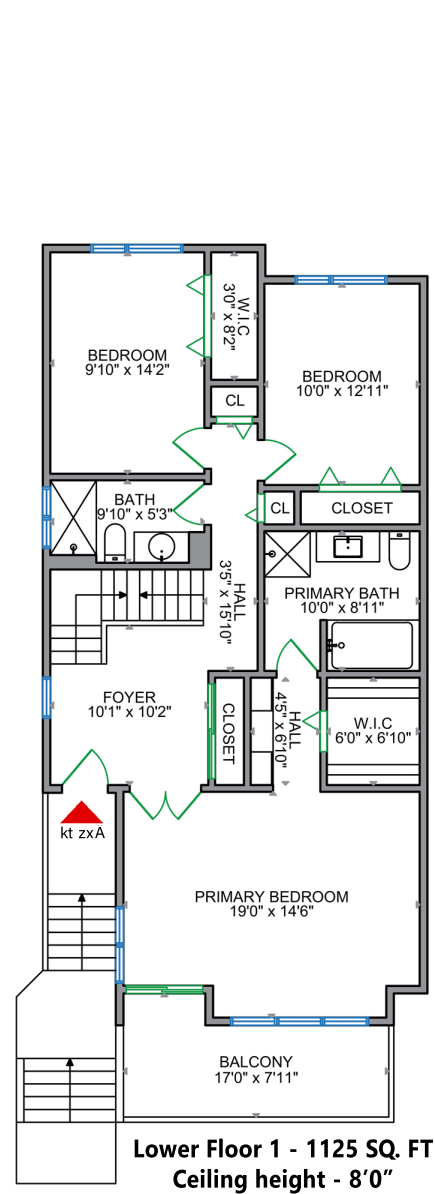
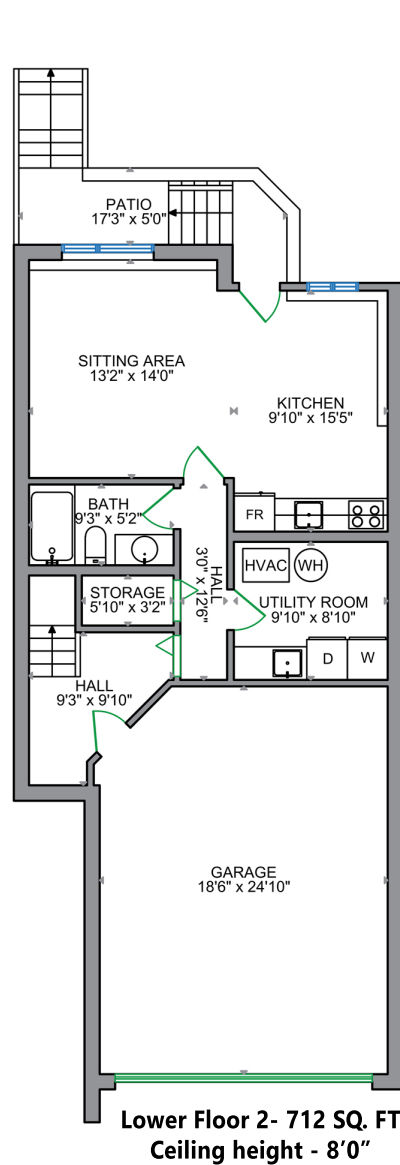


2319 Marine Drive West Vancouver



• LIVING AREA	2827 SQ FT	• EXTRA AREA	874 SQ FT
Main Floor	990 SQ FT	Balcony	344 SQ FT
Lower Floor 1	1125 SQ FT	Garage	452 SQ FT
Lower Floor 2	712 SQ FT	Patio	78 SQ FT