



604.341.8181
ryan@ryanwindsor.ca
www.ryanwindsor.ca

5910 133 St Surrey

RYAN WINDSOR

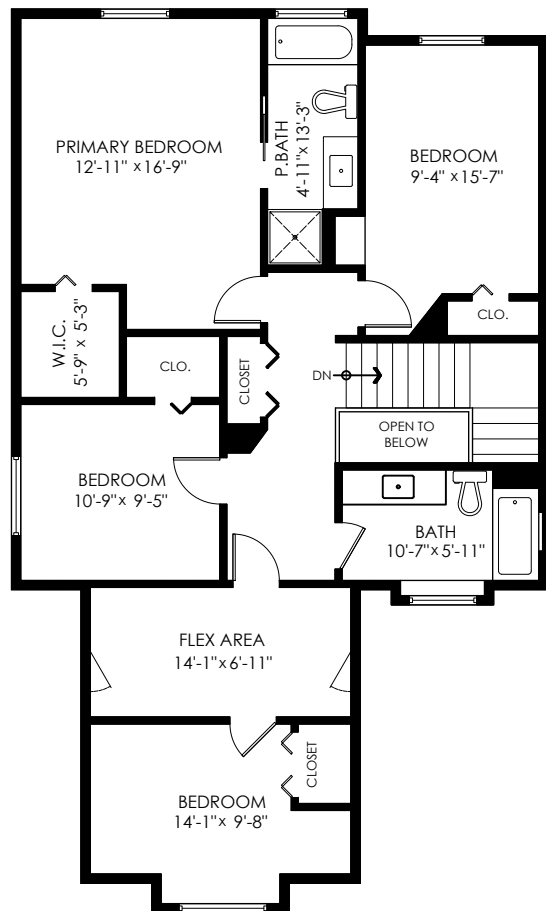
PERSONAL REAL ESTATE CORPORATION

Main Floor: 1,583 sq.ft.
Upper Floor: 1,120 sq.ft.
Total Livable: 2,703 sq.ft.

Garage: 371 sq.ft.
Grand Total: 3,074 sq.ft.

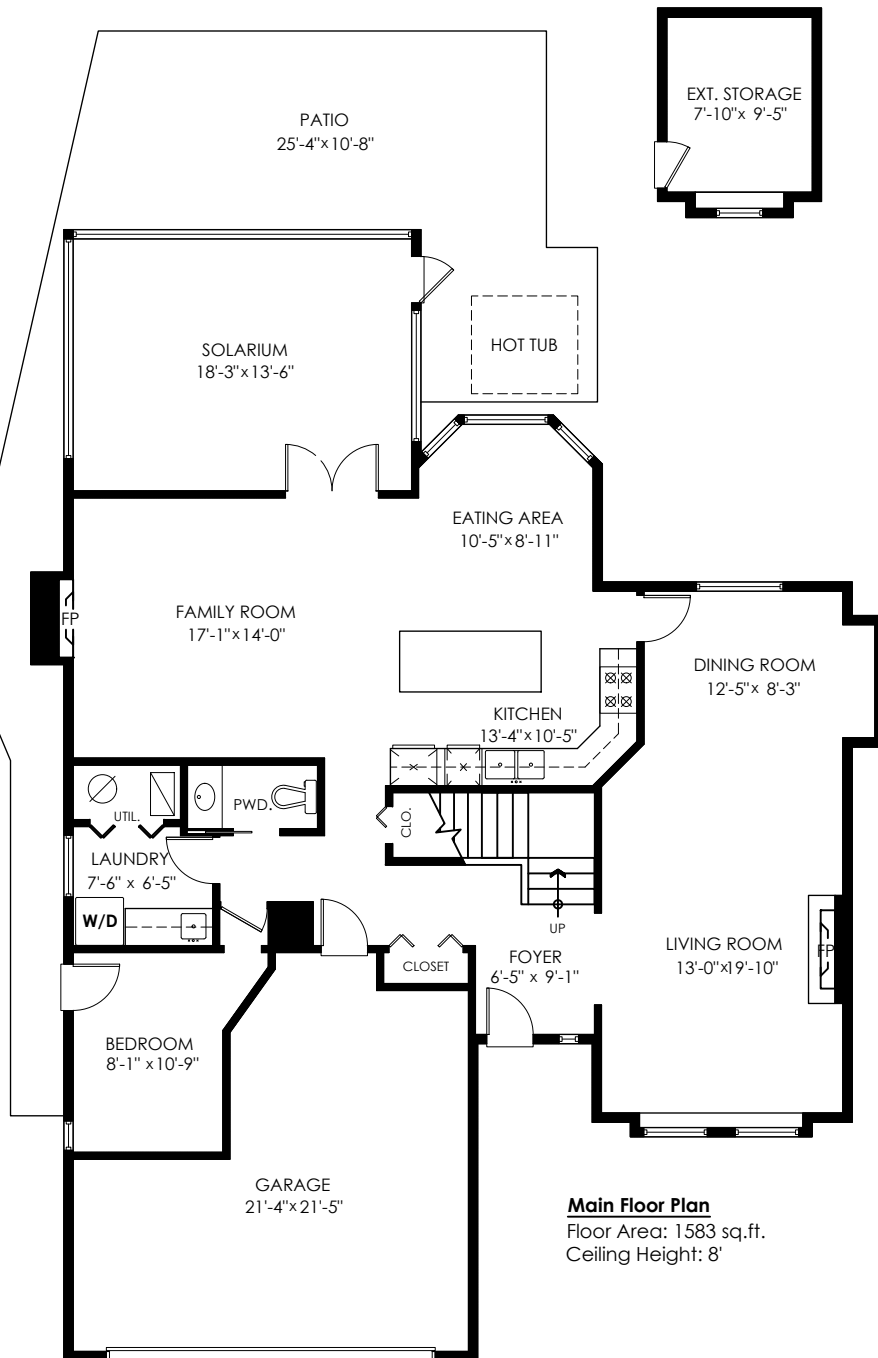
Patio: 356 sq.ft.
Ext. Storage: 92 sq.ft.
Total Extras: 448 sq.ft.

Open To Below: 19 sq.ft.



Upper Floor Plan

Floor Area: 1120 sq.ft.
Ceiling Height: 8'-1"



Main Floor Plan

Floor Area: 1583 sq.ft.
Ceiling Height: 8'



ROYAL LEPAGE

ELITE West

E&O Insured. Total square foot calculated to gross unit area. SQFT based on interior measurements to exterior walls, not taken from original blueprints, may include unfinished area. This is for marketing purposes only and is not intended for architectural/construction use. All details, sizes & placements should be considered approximate within +/- 2% tolerance.



info@pixlworks.com



www.pixlworks.com



604.329.5788



MEASURED ON: (2025-08-08)