

Ryan Windsor

Know. Like. Trust.

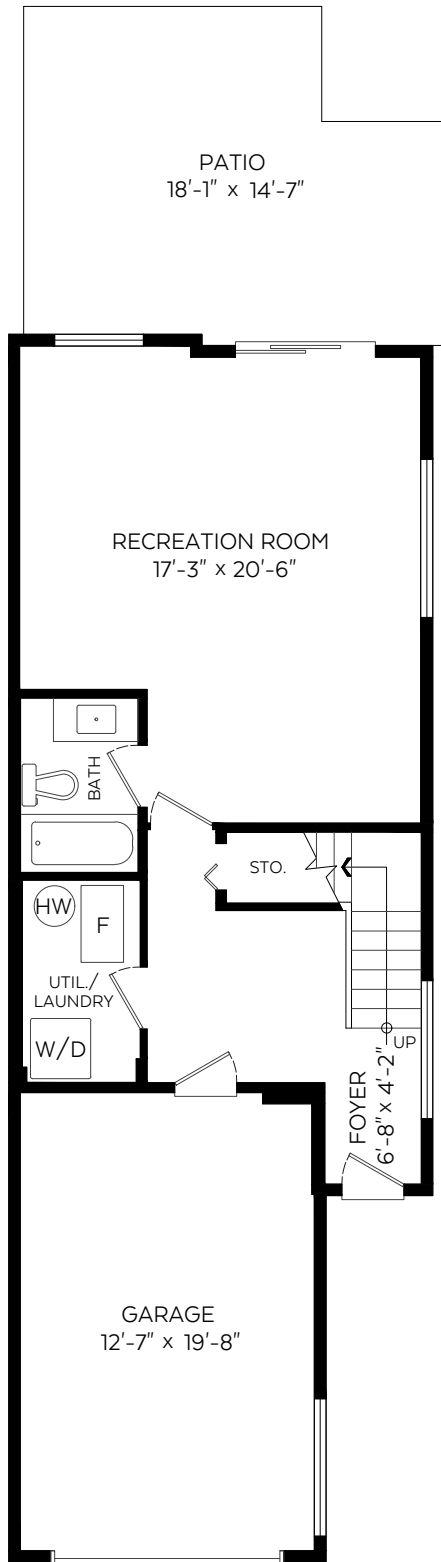
www.RyanWindsor.ca · 604.341.8181 · Ryan@RyanWindsor.ca

#110-750 Prairie Avenue,
Port Coquitlam, B.C.

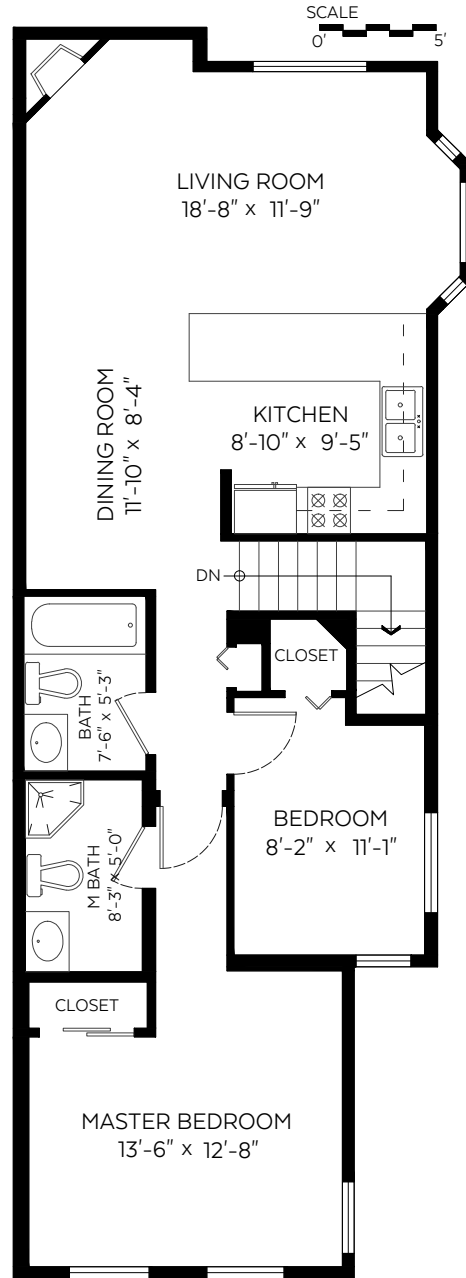
Main Floor:	612 sq.ft.
Upper Floor:	924 sq.ft.
Total:	1,536 sq.ft.

Auxiliary Area

Garage:	271 sq.ft.
Patio:	233 sq.ft.



Main Floor Plan
Floor Area: 612 sq.ft



Upper Floor Plan
Floor Area: 924 sq.ft

Measured on: Sept. 6, 2017

The floor plan is not suitable for architectural/construction and is covered under E&O. © Excelsior Measuring Inc. 2017. All rights reserved for Excelsior Measuring Inc. Users shall not publish and distribute such material (in whole or in part) and/or incorporate it in other works in any form.

