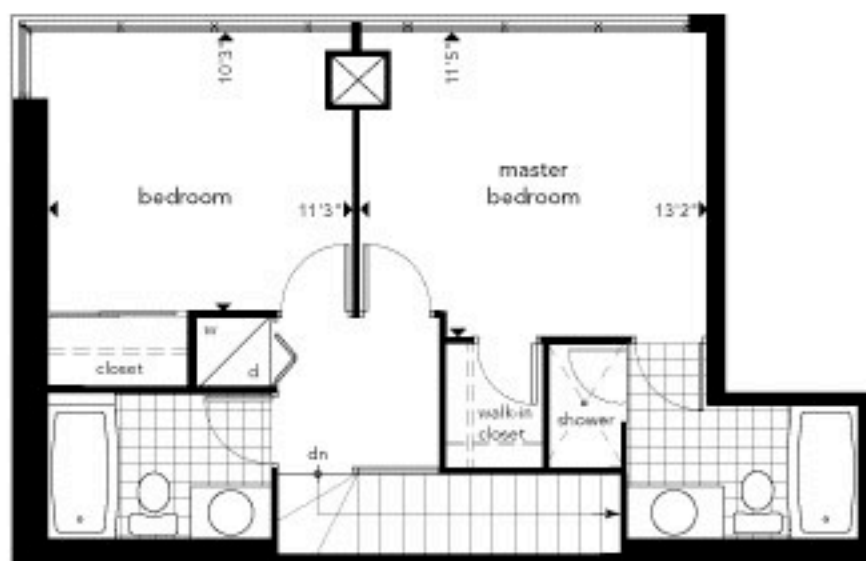


parkin

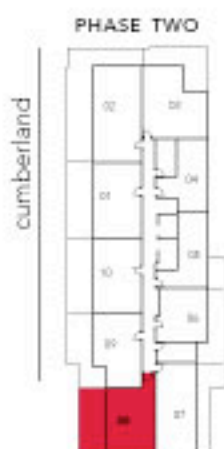
John Parkin, one of Canada's foremost modernist architects in the 1950s and 60s, was responsible for such major buildings as Toronto's Terminal 1 and the soaring Ottawa train station.

08 penthouse | 1,090 sq.ft. | two bedrooms

upper level



lower level



- west and south facing double storey corner penthouse
- large terrace off living/dining area
- extra storage below stairs
- walk-in closet and ensuite washroom with separate oversized shower

