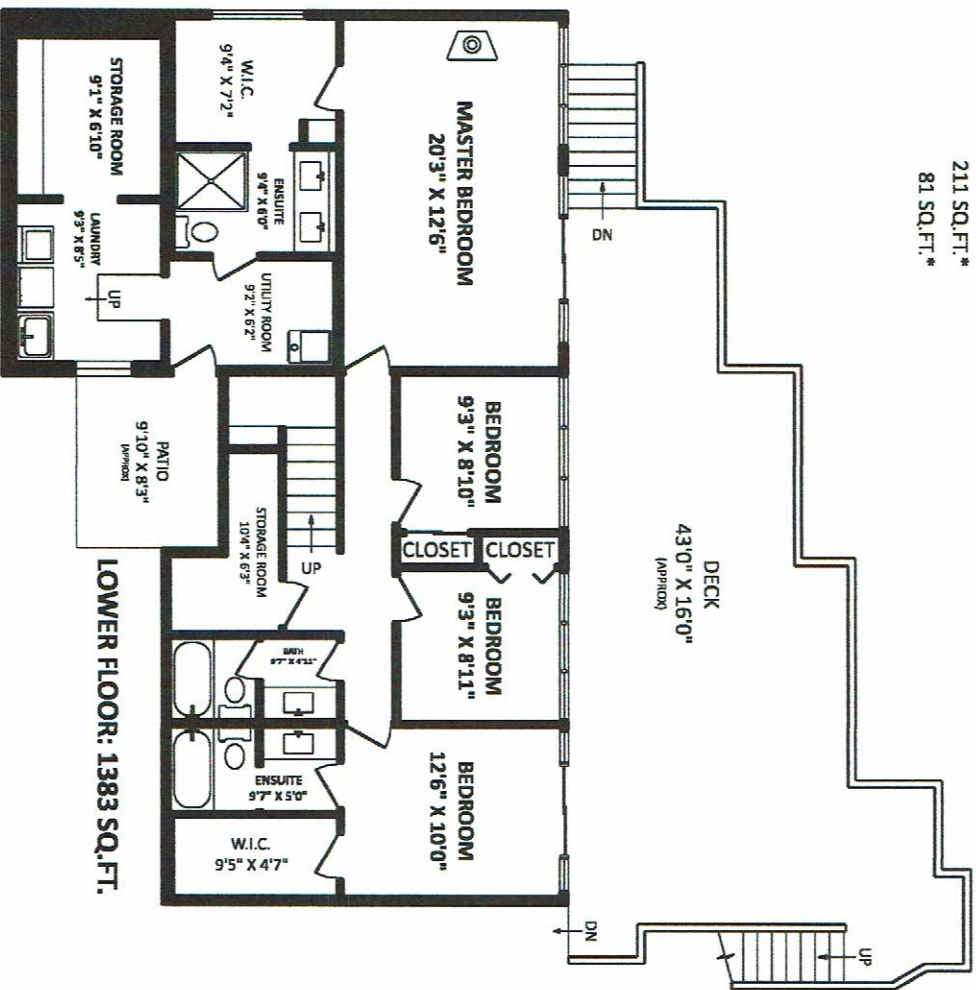
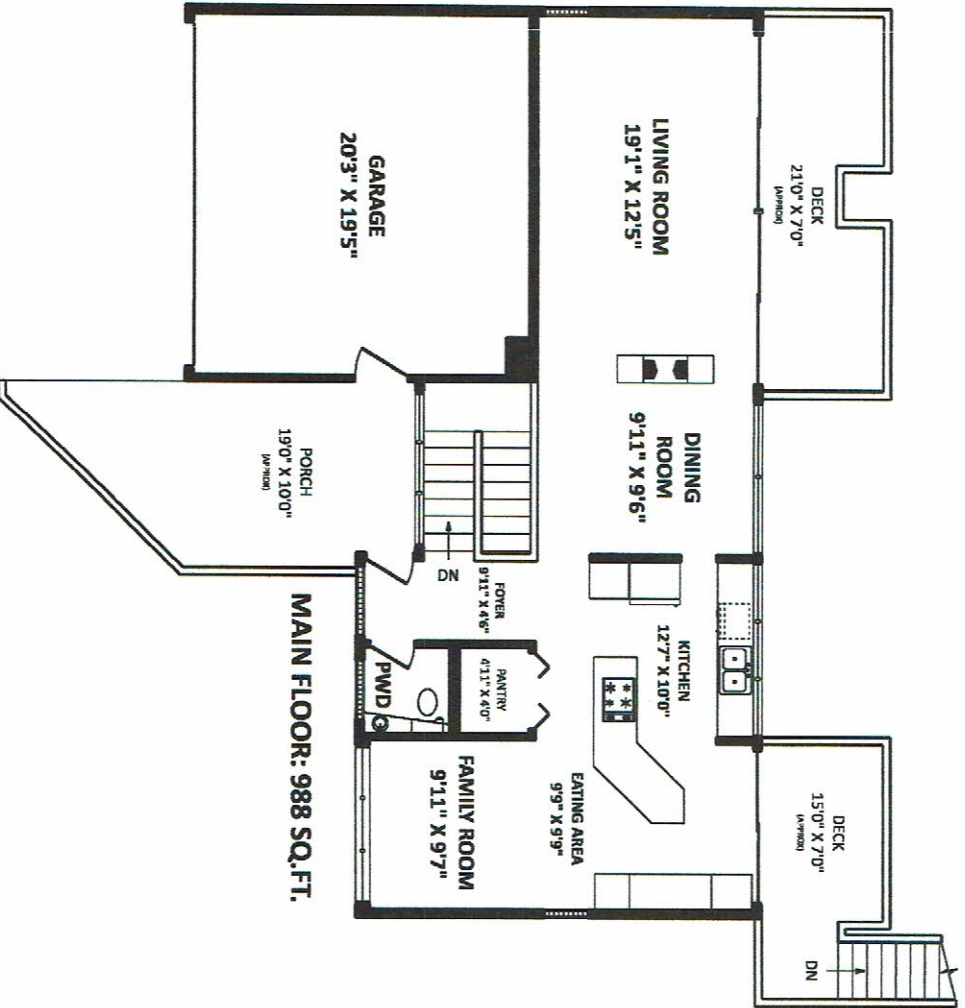


310 Mountain Drive Vancouver, BC

TOTAL FINISHED AREA: 2371 SQ.FT.

OTHER AREA(S)

- GARAGE: 413 SQ.FT.
- DECK(S): 942 SQ.FT.*
- PORCH: 211 SQ.FT.*
- PATIO: 81 SQ.FT.*



DECEMBER 8, 2020

SEE VIRTUAL TOUR

TEL: (604) 575-1244

WWW.SEEVIRTUAL360.COM

DISCLAIMER: THESE PLANS ARE THE PROPERTY OF SEE VIRTUAL 360 INC. AND ARE NOT TO BE REPRODUCED OR TRANSMITTED IN ANY FORM OR BY ANY MEANS, ELECTRONIC OR MECHANICAL, INCLUDING PHOTOCOPYING, RECORDING, OR BY ANY INFORMATION STORAGE AND RETRIEVAL SYSTEM. ANY REPRODUCTION OR TRANSMISSION OF THESE PLANS WITHOUT THE WRITTEN PERMISSION OF SEE VIRTUAL 360 INC. IS STRICTLY PROHIBITED. SEE VIRTUAL 360 INC. IS NOT RESPONSIBLE FOR ANY ERRORS OR OMISSIONS IN THESE PLANS. THE FINISHED SQUARE FOOTAGE OF EACH LEVEL IS INDICATED TO THE NEAREST SQUARE FOOT. ANY MEASUREMENTS WITHIN DRAWINGS ARE APPROXIMATE AND SHOULD BE USED AS A GUIDE ONLY. ANY MEASUREMENTS WITHIN DRAWINGS ARE APPROXIMATE AND SHOULD BE USED AS A GUIDE ONLY.

