

METRIC DISTANCES & CO-ORDINATES SHOWN ON THIS PLAN ARE IN METRES AND CAN BE CONVERTED TO FEET BY DIVIDING BY 0.3048

OBSERVED POINTS (OP'S): DERIVED FROM PRECISE POINT POSITIONING SERVICE (PPPS) UTM ZONE 17 NORTH, NAD 83 (EPSG) (2017) CO-ORDINATES TO RURAL ACCURACY AS PER SECTION 14 (2) OF O. REG. 216/17

POINT ID	NORTHING	EASTING
O.P. "A"	5,026,721.310	642,532.130
O.P. "B"	5,026,722.789	643,001.663

CO-ORDINATES CANNOT BE USED TO ESTABLISH CORNERS OR BOUNDARIES SHOWN ON THIS PLAN.

GRID SCALE CONVERSION DISTANCES ARE GIVEN AND CAN BE CONVERTED TO GRID BY MULTIPLYING BY THE COMBINED SCALE FACTOR OF 0.99989817

PLAN OF SURVEY OF PART OF LOTS 26 AND 27, CONCESSION 6 GEOGRAPHIC TOWNSHIP OF CHAFFEY TOWN OF HUNTSVILLE DISTRICT MUNICIPALITY OF MUSKOKA

SCALE: 1 : 1000

I REQUIRE THIS PLAN TO BE DEPOSITED UNDER THE LAND TILES ACT.

DATE: JUNE 11, 2018

DATE: JUNE 13, 2018

REPRESENTATIVE FOR LAND REGISTRATION FOR THE LAND TILES DIVISION OF MUSKOKA

PAUL GOODRIDGE

Maria Horvat

PART	LOT NO.	CONCESSION	AREA (sq. AC)
1	PART OF LOT 26	ALL OF 48081-0402 (LT)	25.71 / 24.68
2	PART OF LOT 27	ALL OF 48081-0402 (LT)	0.890 / 2.220
3	LOT 26 & 27		3.600 / 3.007

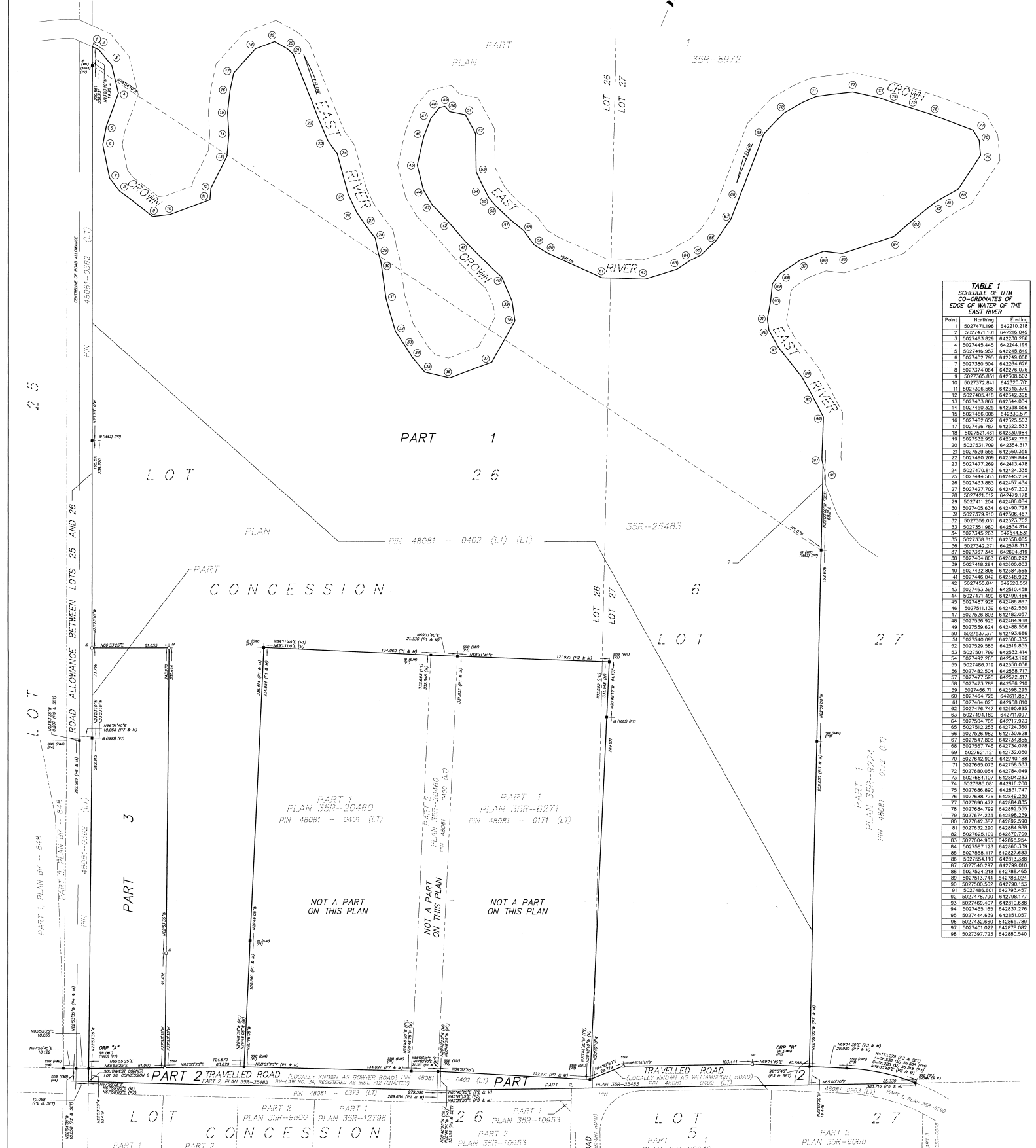


TABLE 1 SCHEDULE OF UTM CO-ORDINATES OF EDGE OF WATER OF THE EAST RIVER

Point	Northing	Easting
1	5027471.198	642210.218
2	5027471.101	642214.943
3	5027463.879	642230.286
4	5027445.445	642244.189
5	5027416.507	642245.945
6	5027402.795	642249.088
7	5027383.504	642264.426
8	5027374.084	642278.076
9	5027365.851	642306.503
10	5027372.841	642320.701
11	5027395.566	642345.370
12	5027409.418	642342.389
13	5027433.867	642344.504
14	5027450.325	642338.594
15	5027466.098	642335.574
16	5027482.652	642325.503
17	5027486.787	642322.533
18	5027521.461	642330.984
19	5027532.908	642342.767
20	5027531.789	642351.425
21	5027529.555	642360.395
22	5027490.299	642398.843
23	5027477.269	642413.478
24	5027470.813	642424.335
25	5027444.563	642445.743
26	5027433.883	642457.434
27	5027427.702	642470.263
28	5027421.012	642478.178
29	5027411.204	642488.084
30	5027405.634	642495.728
31	5027379.910	642506.467
32	5027359.031	642513.702
33	5027351.880	642514.814
34	5027345.283	642514.814
35	5027338.619	642514.814
36	5027342.271	642578.313
37	5027346.348	642604.318
38	5027404.863	642608.292
39	5027418.244	642600.033
40	5027432.896	642584.563
41	5027446.042	642548.997
42	5027455.941	642529.466
43	5027463.593	642510.458
44	5027471.499	642490.466
45	5027487.926	642486.867
46	5027511.139	642482.550
47	5027526.853	642482.027
48	5027536.925	642484.968
49	5027529.824	642486.568
50	5027537.571	642493.686
51	5027540.096	642506.335
52	5027529.665	642514.903
53	5027501.799	642532.414
54	5027492.265	642541.190
55	5027486.710	642550.036
56	5027482.504	642556.717
57	5027477.965	642571.817
58	5027473.788	642586.210
59	5027466.711	642598.795
60	5027464.726	642611.857
61	5027484.025	642658.810
62	5027504.747	642703.695
63	5027494.189	642711.097
64	5027504.705	642713.232
65	5027523.253	642724.363
66	5027526.982	642730.629
67	5027472.808	642742.855
68	5027587.746	642734.078
69	5027631.171	642733.554
70	5027842.903	642740.188
71	5027885.073	642758.533
72	5027880.044	642784.949
73	5027884.107	642804.283
74	5027885.981	642818.200
75	5027886.890	642831.747
76	5027888.776	642844.200
77	5027890.472	642858.435
78	5027884.799	642892.550
79	5027874.333	642898.238
80	5027842.387	642892.590
81	5027632.290	642884.988
82	5027629.109	642879.700
83	5027604.965	642868.954
84	5027587.123	642856.338
85	5027588.417	642827.683
86	5027554.110	642813.338
87	5027540.297	642799.010
88	5027524.218	642788.465
89	5027513.144	642784.504
90	5027500.562	642790.153
91	5027488.601	642793.457
92	5027478.790	642793.174
93	5027469.407	642810.638
94	5027455.165	642817.276
95	5027444.639	642815.057
96	5027432.860	642805.789
97	5027440.022	642818.082
98	5027397.723	642850.540

GOODRIDGE GOULET
PLANNING & SURVEYING LTD.
 ONTARIO LAND SURVEYOR - LAND USE PLANNING - DEVELOPMENT CONSULTANTS
 UNIT 1 - 440 MAIN STREET EAST NORTH BAY ONT. L1N 1B6
 705-492-1770 paul.goodridge@goulet.com
 705-492-1770 maria.horvat@goulet.com
 514-18-7760 (toll-free)

SURVEYOR'S CERTIFICATE

I CERTIFY THAT:
 1. THE SURVEY AND PLAN ARE CORRECT AND IN ACCORDANCE WITH THE SURVEY ACT AND THE REGULATIONS MADE UNDER THERE.
 2. THE SURVEY WAS COMPLETED ON MAY 8, 2018.

PAUL GOODRIDGE
 ONTARIO LAND SURVEYOR

NORTH BAY, ONTARIO
 JUNE 11, 2018