



# HAYWOOD

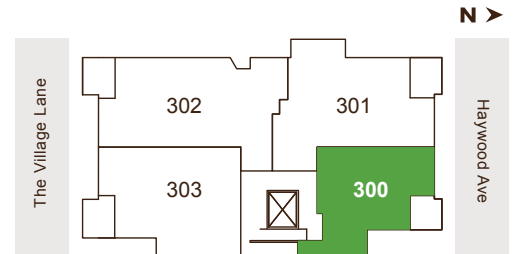
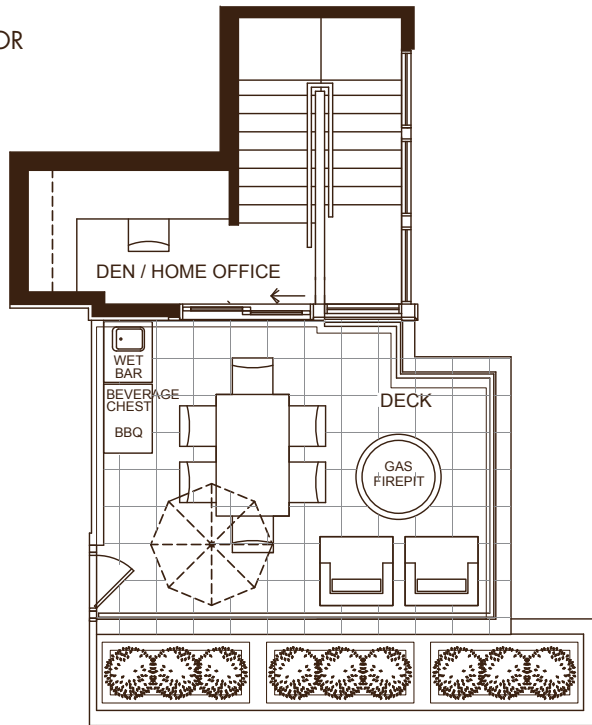
VILLAGE LIFE IN DUNDARAVE

## PENTHOUSE 300

1 BEDROOM + LOFT OFFICE AND ROOFTOP LIVING SPACE

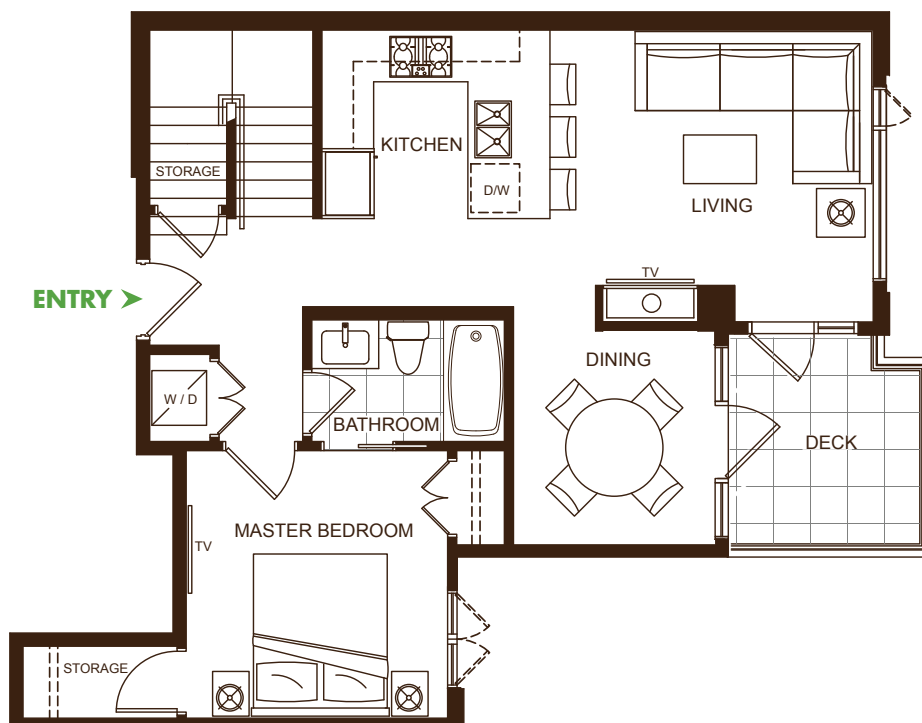
860 sq.ft. Home | 268 sq.ft. Patio+Rooftop | 1128 sq.ft. Total

UPPER FLOOR



ROOFTOP LIVING SPACE PERKS:  
GAS FIRE FEATURE, BUILT-IN BBQ,  
WET BAR AND FRIDGE.

LOWER FLOOR



The Developer reserves the right to make modification and/or substitutions without notice should they be necessary. All square footages, dimensions, specifications and layouts are approximate. Suite areas are based on architectural drawings. Please see your Sales Associate for complete details. E. & O.E.