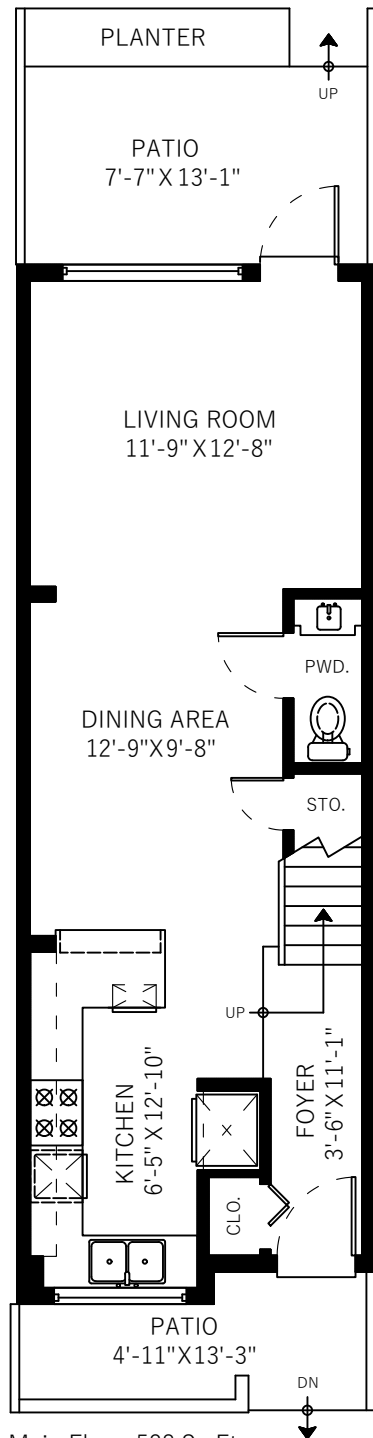


# 5755 St George St Vancouver, BC

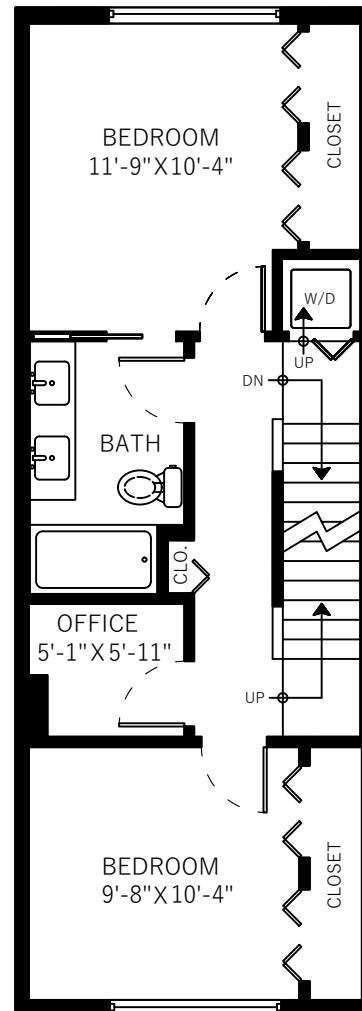
Main Floor	538 SQ.FT.
Upper Floor	528 SQ.FT.
Top Floor	308 SQ.FT.
<b>Total</b>	<b>1374 SQ.FT.</b>

Front Patio	62 SQ.FT.
Rear Patio	99 SQ.FT.
<b>Total Extras</b>	<b>161 SQ.FT.</b>

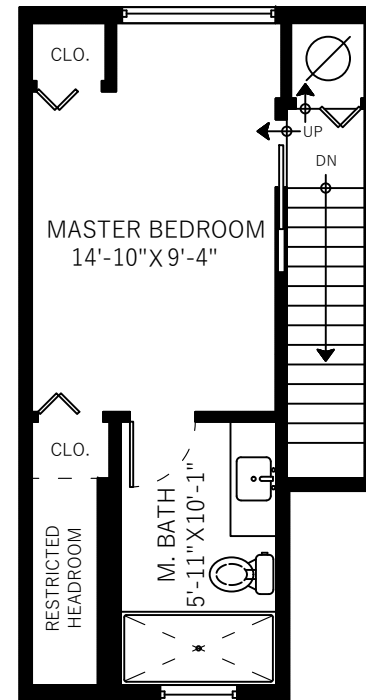
Restricted Headroom 29 SQ.FT.



Main Floor: 538 Sq.Ft.  
Ceiling Height: 9'



Upper Floor: 528 Sq.Ft.  
Ceiling Height: 8'



Top Floor: 308 Sq.Ft.  
Ceiling Height: 8'

