

# BC OnLine



BC OnLine Land Title Internet Service  
Provided in co-operation with  
Land Title and Survey Authority

-----  
LTSA - DOCUMENT RETRIEVAL    REF # N43665    REQUESTED: 2010-04-15 11:45  
-----  
CLIENT NAME:            CASCADIA PACIFIC REALTY LTD.  
ADDRESS:                1020 1500 WEST GEORGIA STREET  
                              VANCOUVER BC V6G 2Z6  
-----  
PICK-UP INSTRUCTIONS:  
-----  
USER ID: PB19695            PLAN # BCS1729            VA Filed            RCVD:2006-02-27  
ACCOUNT: 867430  
FOLIO  
-----  
REMARKS:  
-----

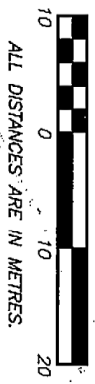
Help Desk    Victoria ..... (250) 953-8200  
                  In B.C. .... 1-800-663-6102  
Administration Office ... (250) 953-8250  
Fax Number ..... (250) 953-8222

Persons who need to rely on a plan for legal purposes must examine the official version at the Land Title Office in which the plan is deposited. However, plans with plan numbers beginning with the letters EPP or EPS are electronic plans which constitute the official version.

REGISTRAR  
*Alan MacDermid* 108  
BA 355 670 - 081

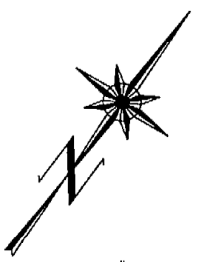
"CITY OF VANCOUVER"  
B.C.G.S. 92G.025

"MONTREUX"  
2055 YUKON STREET,  
VANCOUVER, B.C.



INTEGRATED SURVEY AREA No. 31  
(VANCOUVER) MAD-83 (CSRS)

THIS PLAN SHOWS GROUND-LEVEL MEASURED DISTANCES. PRIOR TO COMPUTATION OF UTM CO-ORDINATES, MULTIPLY BY COMBINED SCALE FACTOR 0.9996030



LEGEND

GRID BEARINGS ARE DERIVED FROM OBSERVATIONS BETWEEN CONTROL MONUMENTS V-986 AND V-989

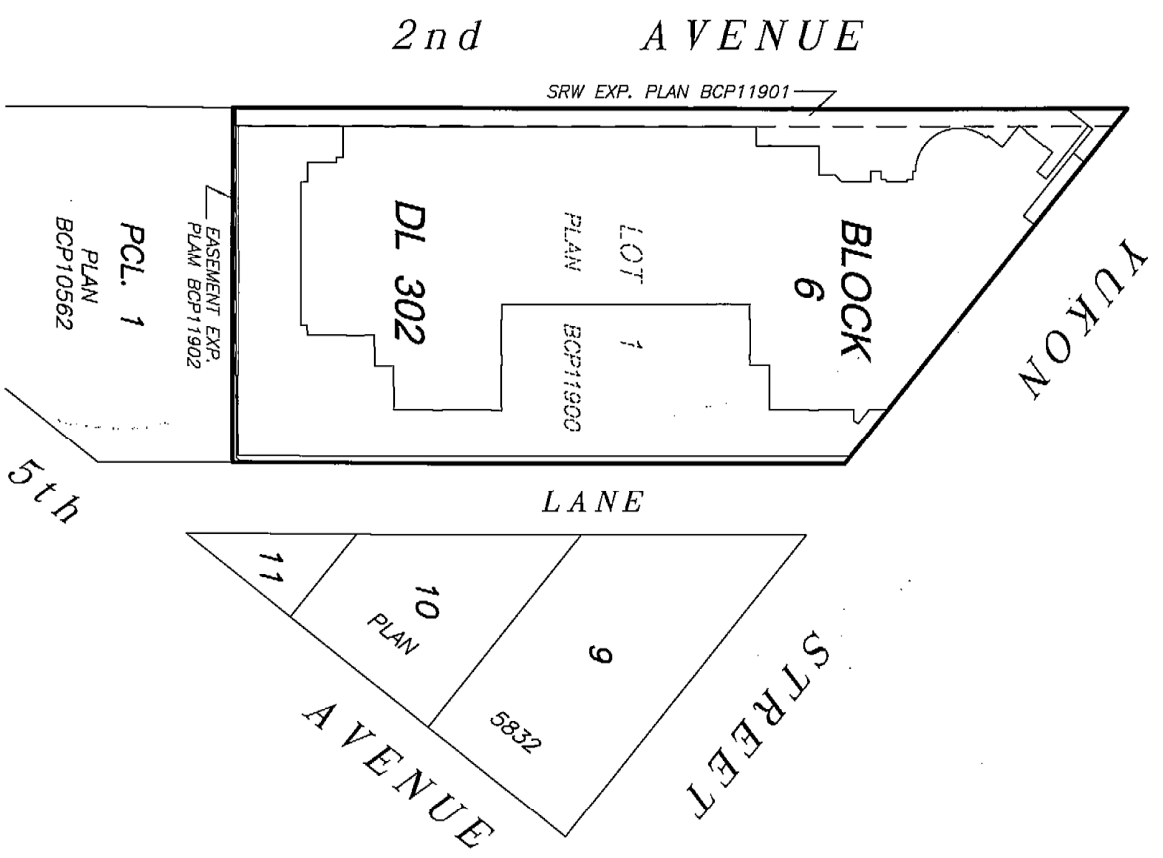
- - DENOTES CONTROL MONUMENT FOUND
- - DENOTES STANDARD IRON POST FOUND
- - DENOTES STANDARD IRON POST PLACED
- - DENOTES LEAD PLUG FOUND
- - DENOTES LEAD PLUG PLACED
- D/R - DENOTES DESTROYED/RESET
- SL - DENOTES STRATA LOT
- PT. - DENOTES PART
- LCP - DENOTES LIMITED COMMON PROPERTY
- ⊙ - DENOTES COMMON PROPERTY
- ⊖ - DENOTES ELECTRICAL CLOSET BEING LIMITED COMMON PROPERTY FOR THE EXCLUSIVE USE OF SL'S 1 TO 11 INCLUSIVE.
- ⊖ - DENOTES ELECTRICAL CLOSET BEING LIMITED COMMON PROPERTY FOR THE EXCLUSIVE USE OF SL'S 12 TO 92 INCLUSIVE.
- ⊖ - DENOTES MECHANICAL SPACE BEING LIMITED COMMON PROPERTY FOR THE EXCLUSIVE USE OF SL'S 12 TO 92 INCLUSIVE.
- ⊖ - DENOTES ROOF DECK BEING LIMITED COMMON PROPERTY FOR THE EXCLUSIVE USE OF SL. 12
- ⊖ - DENOTES BALCONY BEING LIMITED COMMON PROPERTY FOR THE EXCLUSIVE USE OF SL. 15
- ⊖ - DENOTES LOCKER BEING LIMITED COMMON PROPERTY FOR THE EXCLUSIVE USE OF SL. 12
- ⊖ - DENOTES PARKING STALL BEING LIMITED COMMON PROPERTY FOR THE EXCLUSIVE USE OF SL. 12
- ⊖ - DENOTES LIMITED COMMON PROPERTY FOR THE EXCLUSIVE USE OF SL'S 1 TO 11 INCLUSIVE.
- ⊖ - DENOTES LIMITED COMMON PROPERTY FOR THE EXCLUSIVE USE OF SL'S 12 TO 92 INCLUSIVE.
- ⊖ - DENOTES BOUNDARY DEFINED BY LEAD PLUGS PLACED. ( NO WALLS )
- ⊖ - DENOTES PARKING STALL NUMBER 1 TYPICAL

I, MIKE E. SHAW, A BRITISH COLUMBIA LAND SURVEYOR CERTIFY THAT THE BUILDING SHOWN ON THIS STRATA PLAN IS WITHIN THE EXTERNAL BOUNDARIES OF THE LAND THAT IS THE SUBJECT OF THE STRATA PLAN.

DATE: JANUARY 6th, 2006.

*Mike E. Shaw*

BENNETT & ASSOCIATES  
B.C. LAND SURVEYORS  
#201-9547 152nd STREET,  
SUITE 201, R.C.



SEE SHEET #2 FOR BOUNDARY DIMENSIONS

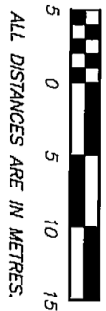
SEE SHEET #3 FOR BUILDING LOCATION AND DIMENSIONS

THIS STRATA PLAN CONTAINS LIMITED COMMON PROPERTY ACCORDING TO SEC. 73 (a)(i) OF THE STRATA PROPERTY ACT.

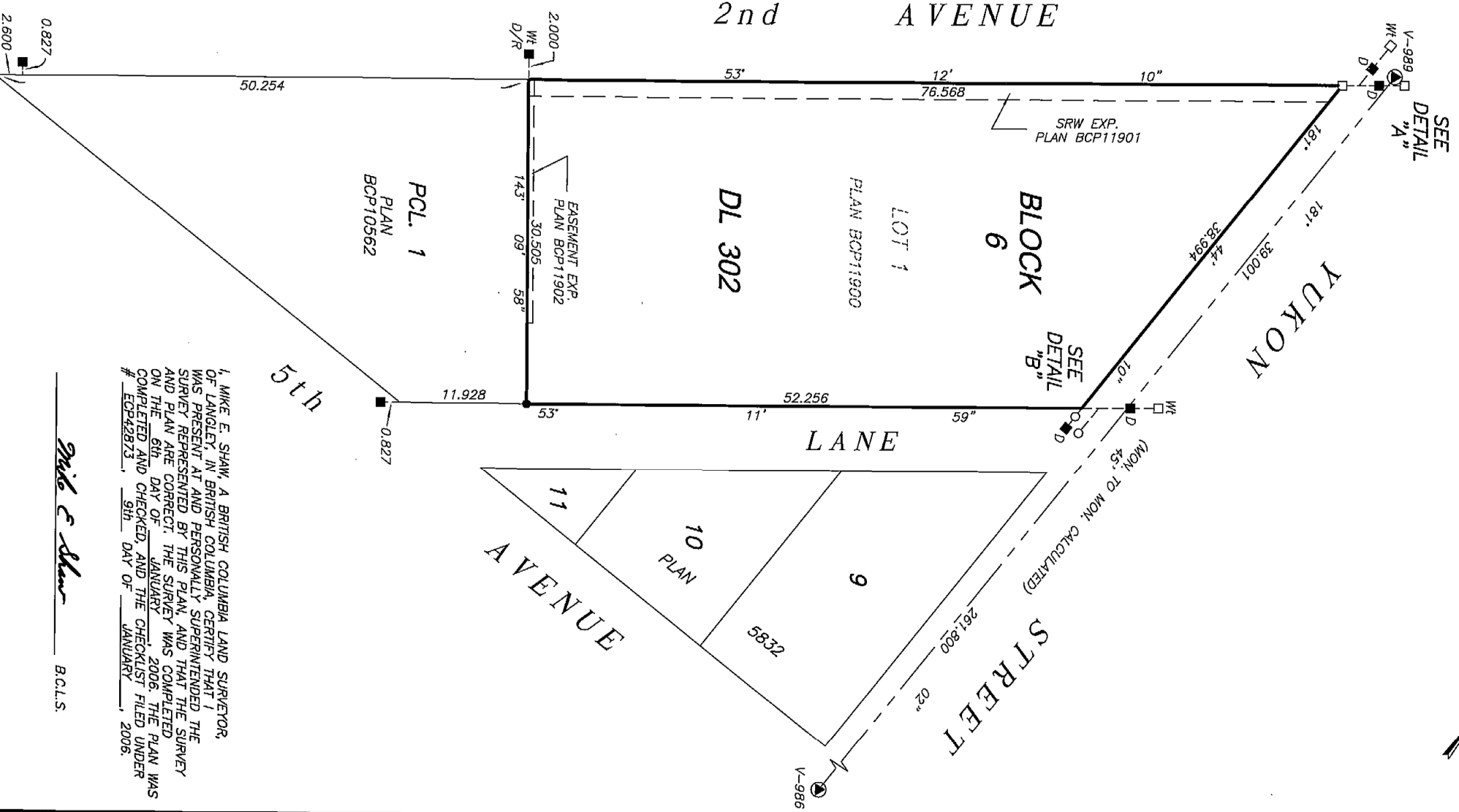
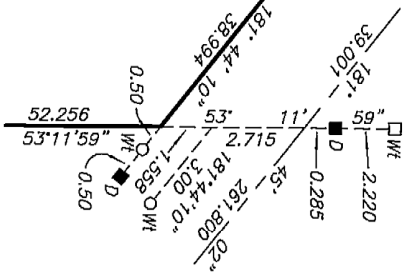
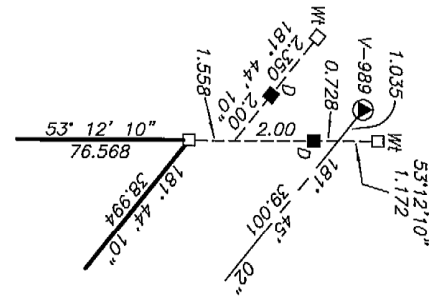
NOTE: 53°07'19" - DENOTES GRID BEARING OF STRATA LOT BOUNDARY ALL BOUNDARIES OF STRATA LOTS ARE PARALLEL TO, PERPENDICULAR TO, OR AT 45° DEFLECTION TO, UNLESS OTHERWISE SHOWN.

NOTE:

STRATA LOT BOUNDARIES ARE DEFINED AS CENTER LINE OF WALL FOR DEMISING WALLS OF STRATA LOTS AND 0.025 METRES ( ONE INCH ) INSIDE ALL EXTERIOR WALLS OF STRATA LOTS.



ALL DISTANCES ARE IN METRES.



**DETAIL "B"**  
NOT TO SCALE

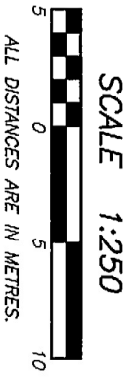
**DETAIL "A"**  
NOT TO SCALE

SEE  
DETAIL  
"A"

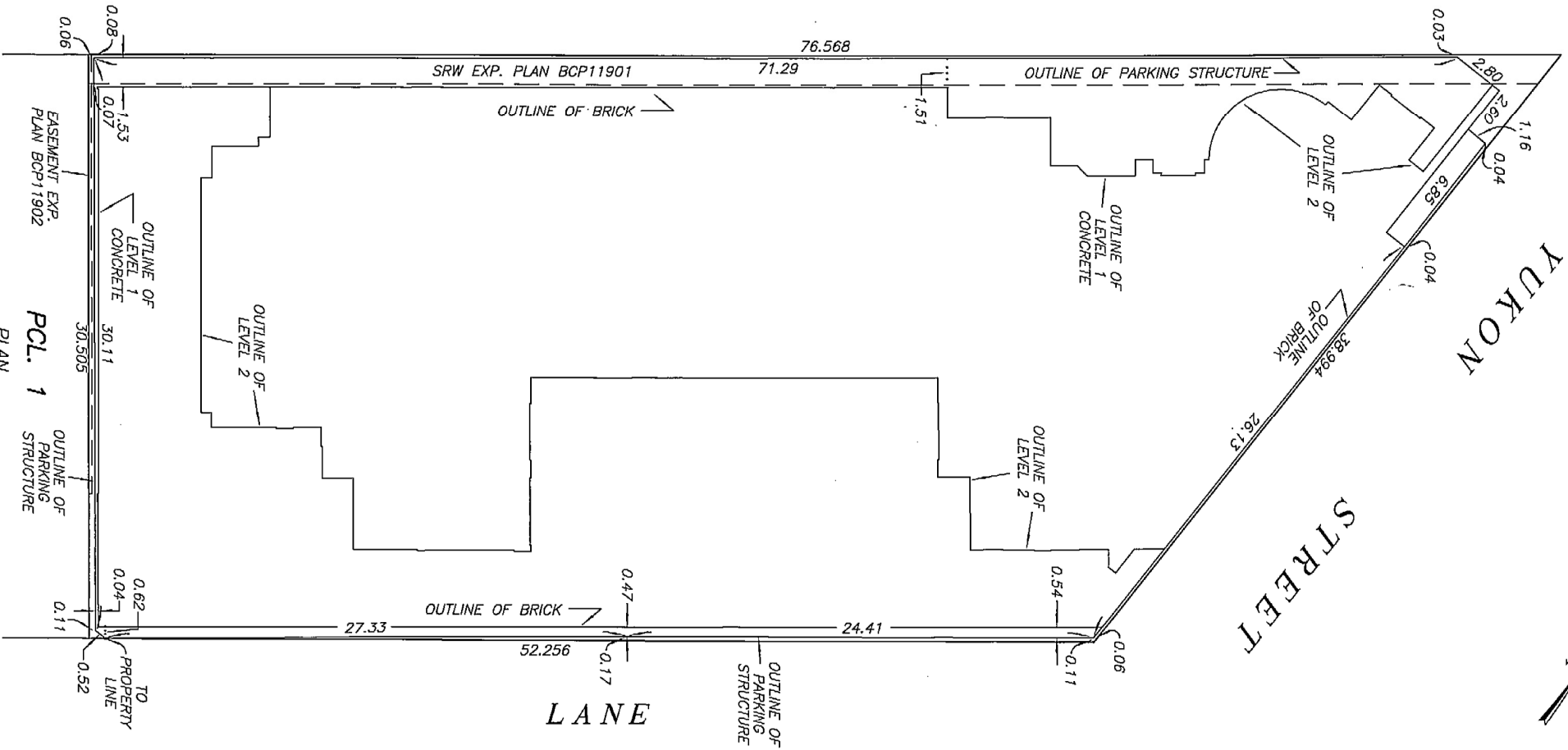
SEE  
DETAIL  
"B"

I, MIKE E. SHAW, A BRITISH COLUMBIA LAND SURVEYOR,  
OF LANGLEY, IN BRITISH COLUMBIA, CERTIFY THAT I  
WAS PRESENT AT AND PERSONALLY SUPERINTENDED THE  
SURVEY REPRESENTED BY THIS PLAN, AND THAT THE SURVEY  
AND PLAN ARE CORRECT. THE SURVEY WAS COMPLETED  
ON THE 6th DAY OF JANUARY 2006. THE PLAN WAS  
COMPLETED AND CHECKED, AND THE CHECKLIST FILED UNDER  
# ECP42873, 9th DAY OF JANUARY, 2006.

*Mike E Shaw*  
B.C.L.S.



# 2nd AVENUE



PLAN  
BCP10569

OWNER :  
YUKON CROSSING PROPERTIES INC.  
(INC. NO. 629480)

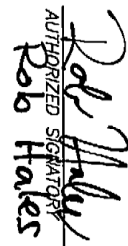
AUTHORIZED SIGNATORY  
  
HUGH TAUGYE  
AUTHORIZED SIGNATORY

WITNESS AS TO BOTH SIGNATURES  
THOMAS BECHINOR  
OCCUPATION OF WITNESS  
Lawyer  
300 - 1251 CHESTNUT ST.  
VANCOUVER, B.C.  
ADDRESS OF WITNESS

I, MIKE E. SHAW, A BRITISH COLUMBIA LAND SURVEYOR,  
CERTIFY THAT THE BUILDING INCLUDED IN THIS STRATA  
PLAN HAS NOT, AS OF JANUARY 6th, 2006, BEEN  
PREVIOUSLY OCCUPIED.


Mike E Shaw B.C.L.S.

MORTGAGEE :  
THE TORONTO-DOMINION BANK

AUTHORIZED SIGNATORY  
  
Rob Hales  
AUTHORIZED SIGNATORY

WITNESS AS TO BOTH SIGNATURES  
Shirley  
RENEE MAHE  
OCCUPATION OF WITNESS  
CLERK OFFICER  
702 W. HESLOAN ST. VANCOUVER BC  
ADDRESS OF WITNESS

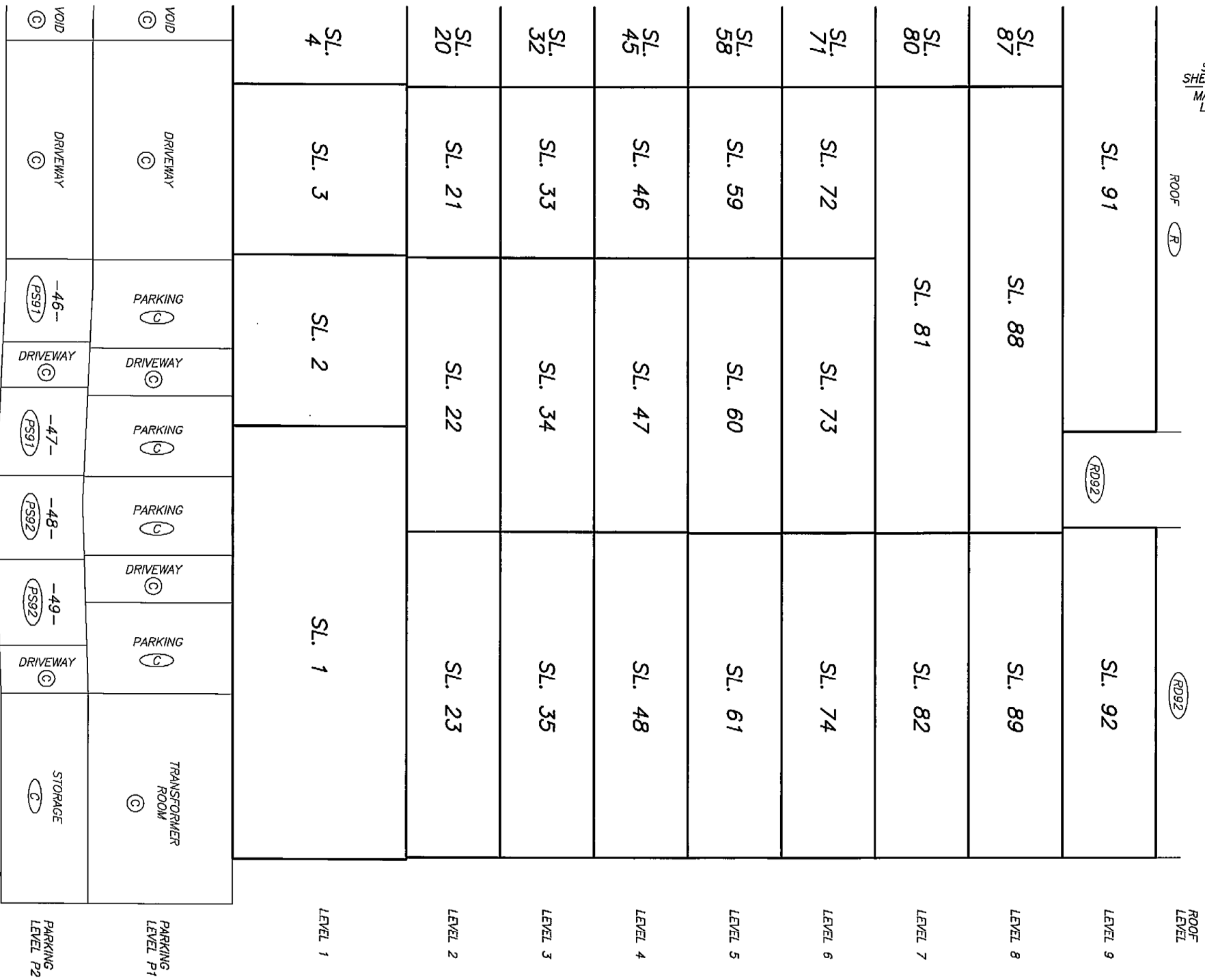
THE CITY OF VANCOUVER, REGISTERED OWNER  
OF COVENANTS BW283576, BW283578 AND BW283588  
HEREBY CONSENTS TO THE DEPOSIT OF THIS PLAN.

Shirley  
AUTHORIZED SIGNATORY garran johnson 

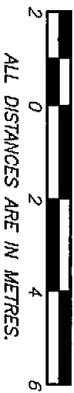
AUTHORIZED SIGNATORY



SEE SHEET #6  
MATCH LINE



SCALE 1:125



SEE SHEET #7 MATCH LINE

ROOF (R)

MATCH LINE SEE SHEET #5

LEVEL 9 SL. 90 SL. 91

LEVEL 8 SL. 85 SL. 86 SL. 87 SL. 88

LEVEL 7 SL. 78 SL. 79 SL. 80 SL. 81

LEVEL 6 SL. 67 SL. 68 SL. 69 SL. 70 SL. 71 SL. 72

LEVEL 5 SL. 54 SL. 55 SL. 56 SL. 57 SL. 58 SL. 59

LEVEL 4 SL. 41 SL. 42 SL. 43 SL. 44 SL. 45 SL. 46

LEVEL 3 SL. 28 SL. 29 SL. 30 SL. 31 SL. 32 SL. 33

LEVEL 2 SL. 16 SL. 17 SL. 18 SL. 19 SL. 20 SL. 21

LEVEL 1 SL. 8 SL. 7 SL. 6 SL. 5 SL. 4 SL. 3

CORRIDOR LCP SL. 6

PARKING LEVEL P1  
 PARKING -C3- (C)  
 PARKING -C4- (C)  
 PARKING -C5- (C)  
 PARKING -C6- (C)  
 PARKING -C7- (C)  
 PARKING -C8- (C)  
 PARKING -C9- (C)  
 PARKING -C10- (C)  
 VOID (C)  
 DRIVEWAY (C)

PARKING LEVEL P2  
 -38- (PS78)  
 -39- (PS78)  
 -40- (PS30)  
 -41- (PS81)  
 -42- (PS81)  
 -43- (PS79)  
 -44- (PS18)  
 -45- (PS33)  
 VOID (C)  
 DRIVEWAY (C)

PARKING LEVEL P3  
 -89A- (PS87)  
 VOID (C)  
 DRIVEWAY (C)

SEE SHEET #7 MATCH LINE

AMENDED PURSUANT TO SEC. 257 STRATA PROPERTY ACT. THIS 1st DAY SEPT 2006 See BA543440 AND

MATCH LINE SEE SHEET #5

PURSUANT TO SECTION 257 OF THE STRAITA PROPERTY ACT

SCALE 1:125



SECTION A - A'  
MID-SECTION

*Lawrence J. D. ...*  
DEPUTY REGISTRAR

BA 543440

ROOF LEVEL

ROOF (R)

SEE SHEET #7A  
MATCH LINE

MATCH LINE  
SEE SHEET #5

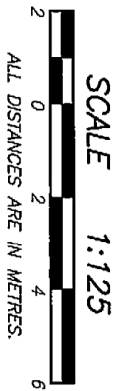
LEVEL 9	SL. 90										SL. 91
LEVEL 8	SL. 85	SL. 86				SL. 87				SL. 88	
LEVEL 7	SL. 78	SL. 79				SL. 80				SL. 81	
LEVEL 6	SL. 67	SL. 68	SL. 69		SL. 70	SL. 71		SL. 72			
LEVEL 5	SL. 54	SL. 55	SL. 56		SL. 57	SL. 58		SL. 59			
LEVEL 4	SL. 41	SL. 42	SL. 43		SL. 44	SL. 45		SL. 46			
LEVEL 3	SL. 28	SL. 29	SL. 30		SL. 31	SL. 32		SL. 33			
LEVEL 2	SL. 16	SL. 17	SL. 18		SL. 19	SL. 20		SL. 21			
LEVEL 1	SL. 8	SL. 7	SL. 6		SL. 5	SL. 4		SL. 3			
PARKING LEVEL P1	PARKING -C3- (C)	PARKING -C4- (C)	PARKING -C5- (C)	PARKING -C6- (C)	PARKING -C7- (C)	PARKING -C8- (C)	PARKING -C9- (C)	PARKING -C10- (C)	DRIVEWAY (C)		
PARKING LEVEL P2	-38- (PS78)	-39- (PS78)	-40- (PS30)	-41- (PS81)	-42- (PS81)	-43- (PS79)	-44- (PS18)	-45- (PS33)	DRIVEWAY (C)		
PARKING LEVEL P3	-89A- (PS85)	VOID (C)								DRIVEWAY (C)	

CORRIDOR  
LCP SL. 6

CERTIFIED CORRECT  
THIS 5th DAY OF JUNE, 2006.

MATCH LINE  
SEE SHEET #5

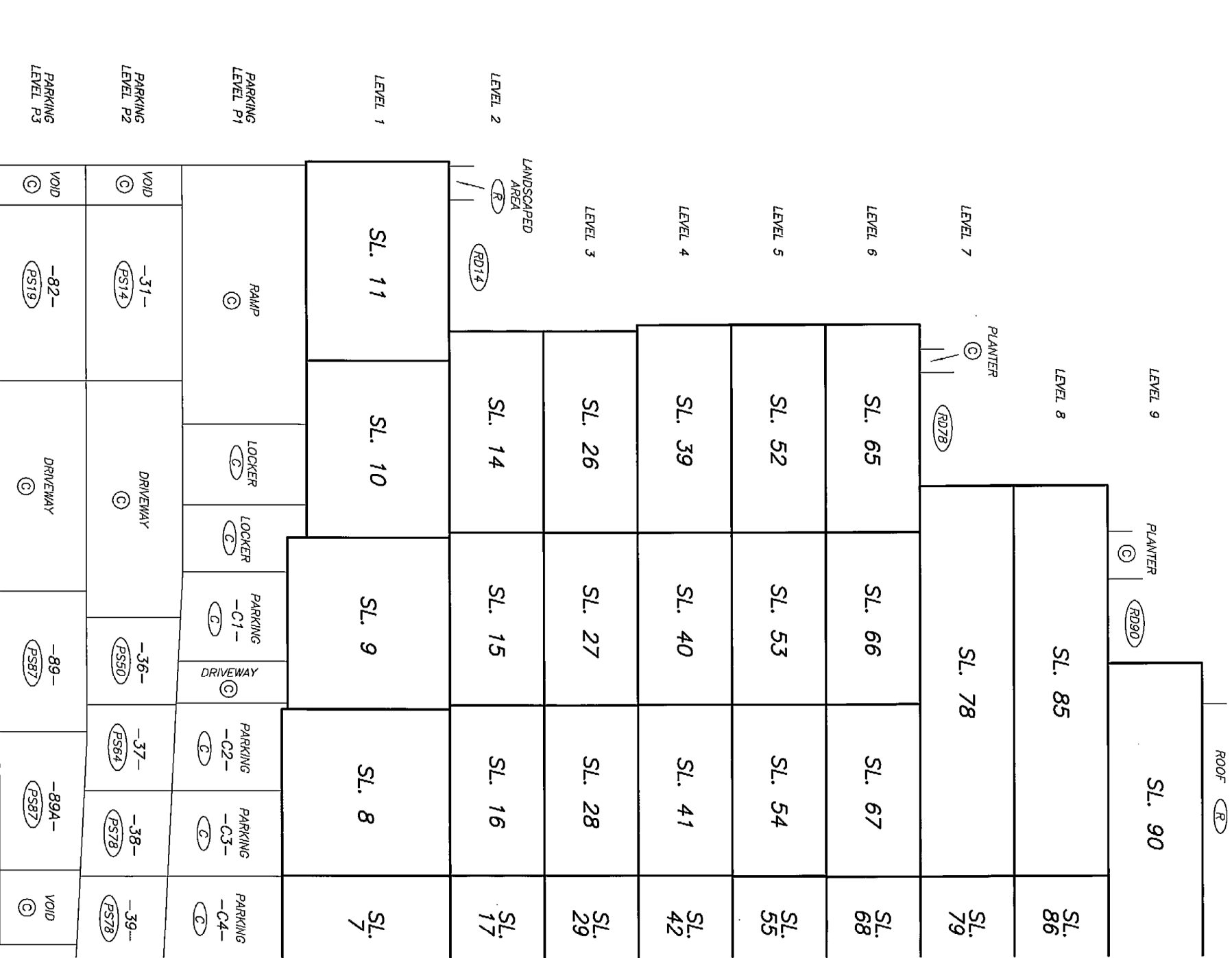




ROOF LEVEL

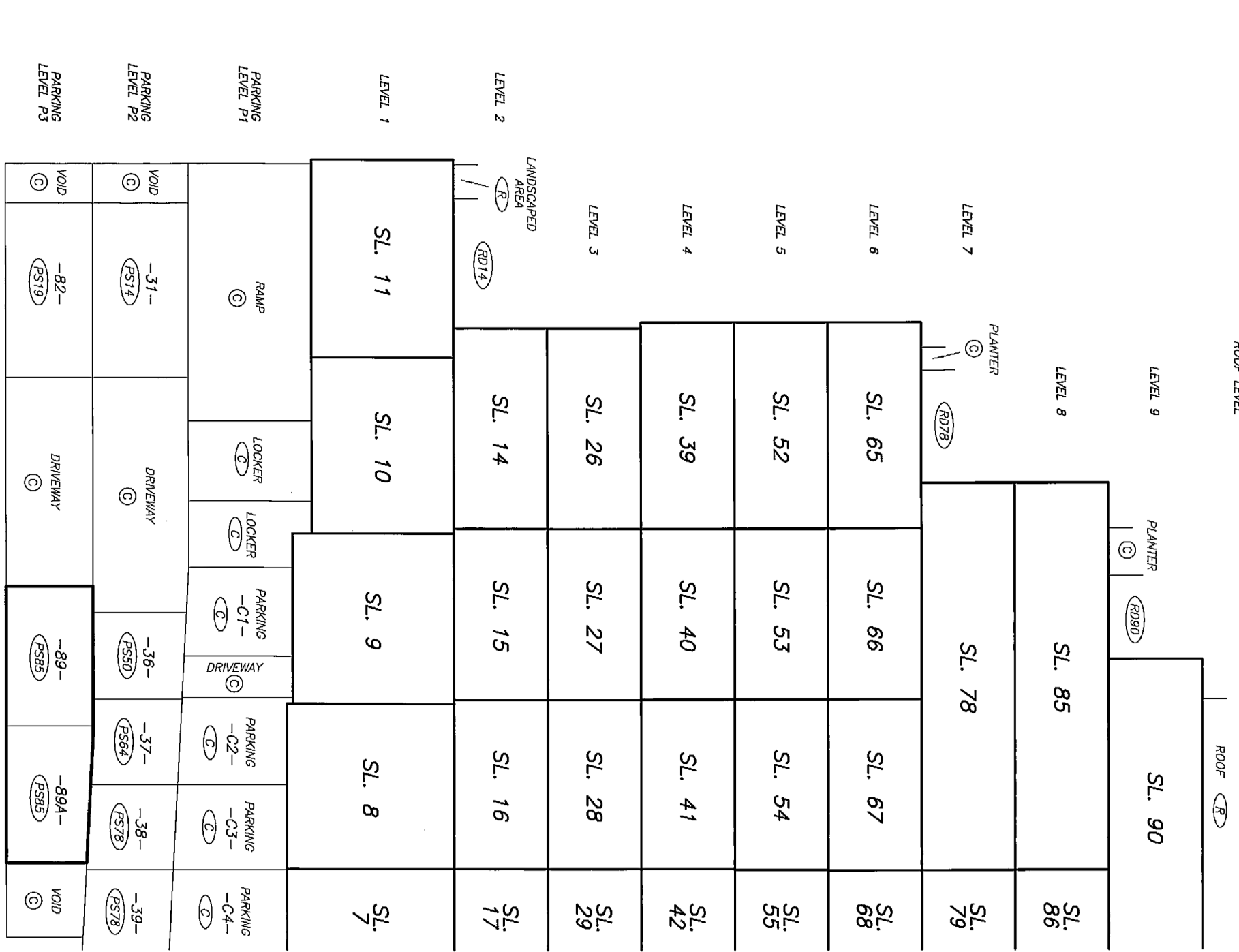
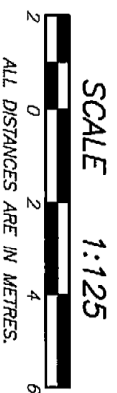
ROOF (R)

MATCH LINE  
SEE SHEET #6



AMENDED PURSUANT TO SEC. 257  
STAMP PROPERTY ACT.  
THIS IS DAY SEPT 2006

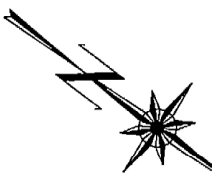
MATCH LINE  
SEE SHEET #6



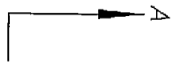
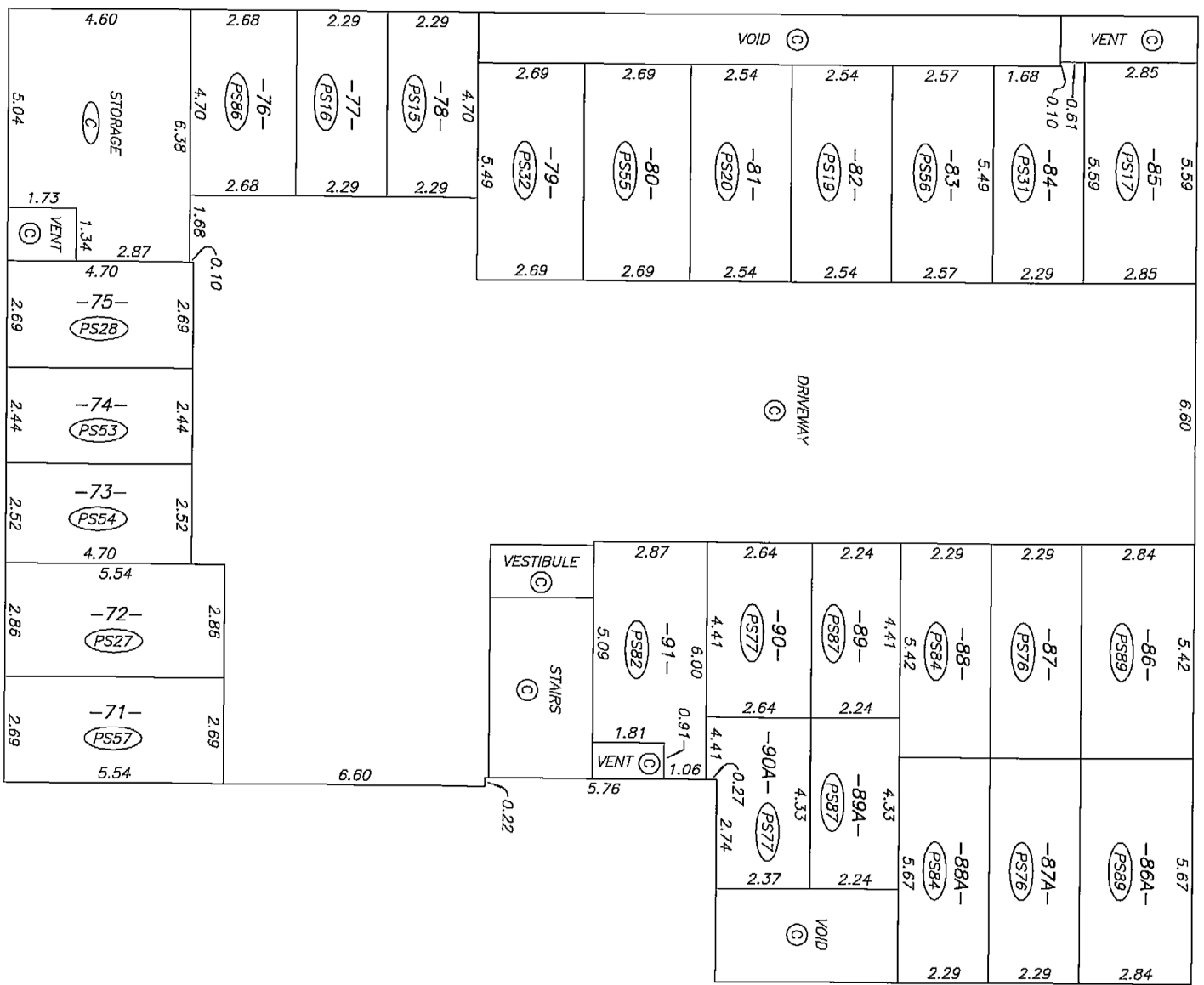
MATCH LINE  
SEE SHEET #6A

MATCH LINE  
SEE SHEET #6A

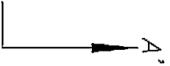
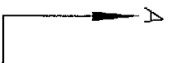
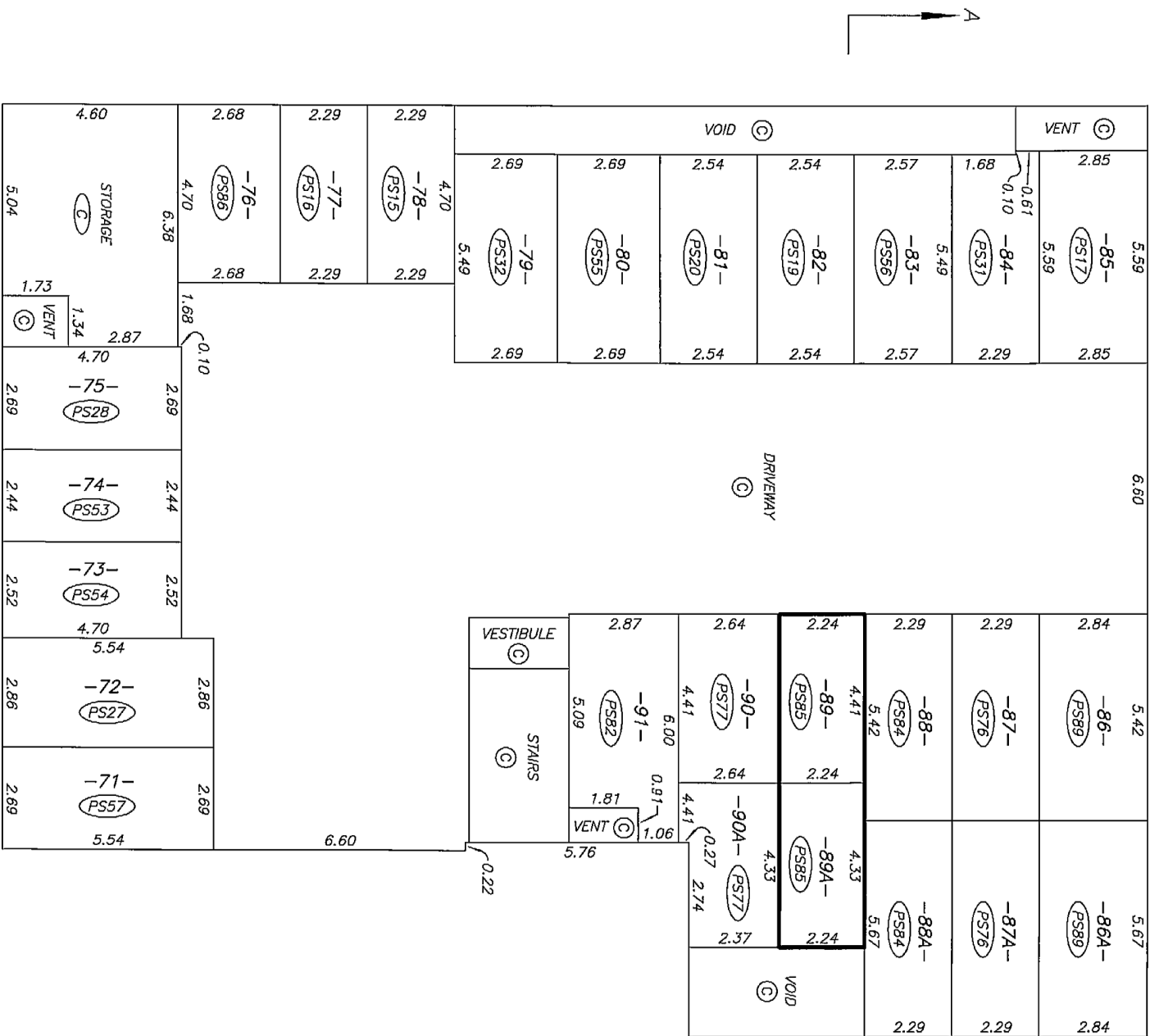
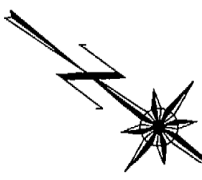
SCALE 1:125  
 ALL DISTANCES ARE IN METRES.



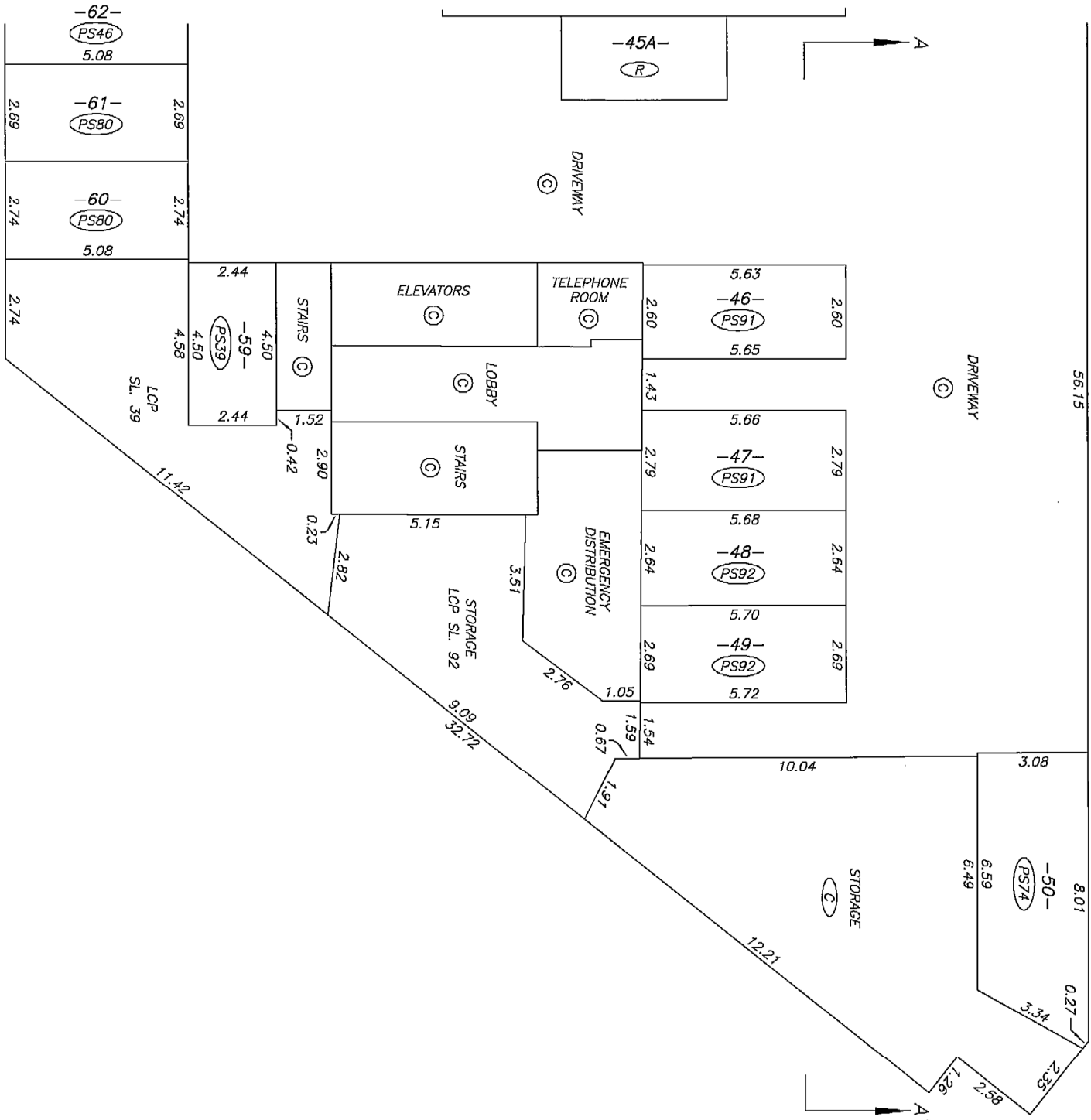
AMENDED PURSUANT TO SEC. 257  
 STRATA PROPERTY ACT.  
 THIS 1ST DAY SEPT 2006  
 SEC BA543440 AND AMENDED SHEET 8A



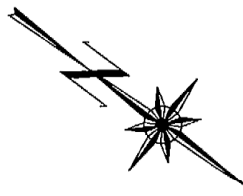
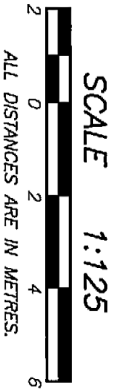
SCALE 1:125  
 ALL DISTANCES ARE IN METRES.

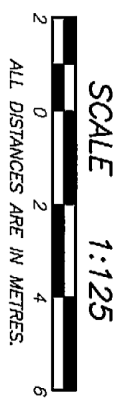


SEE SHEET #10  
MATCH LINE



SEE SHEET #10  
MATCH LINE





SEE SHEET #11  
MATCH LINE

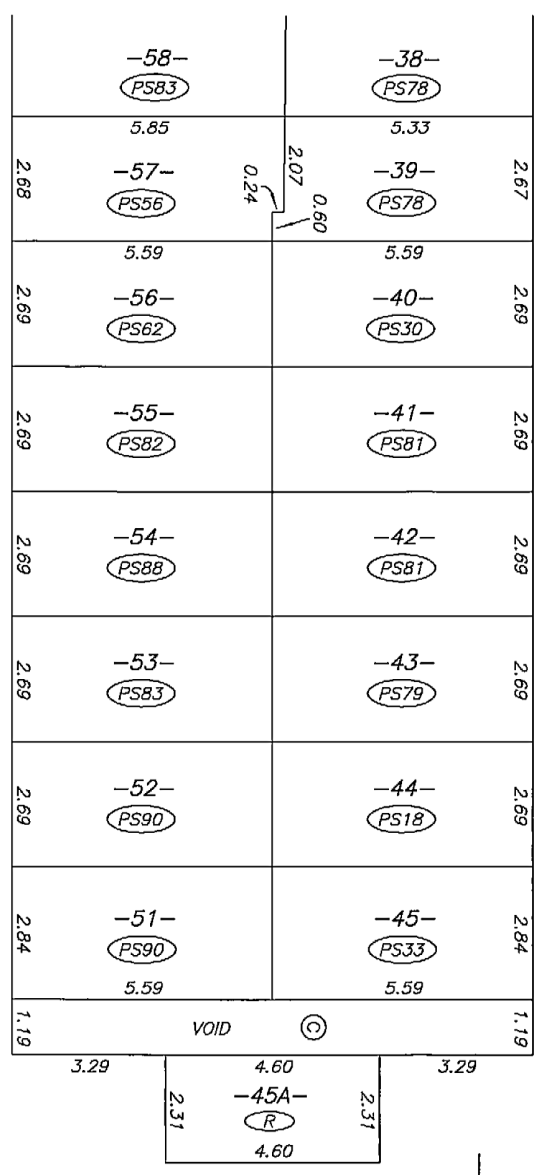
MATCH LINE  
SEE SHEET #9

56.15

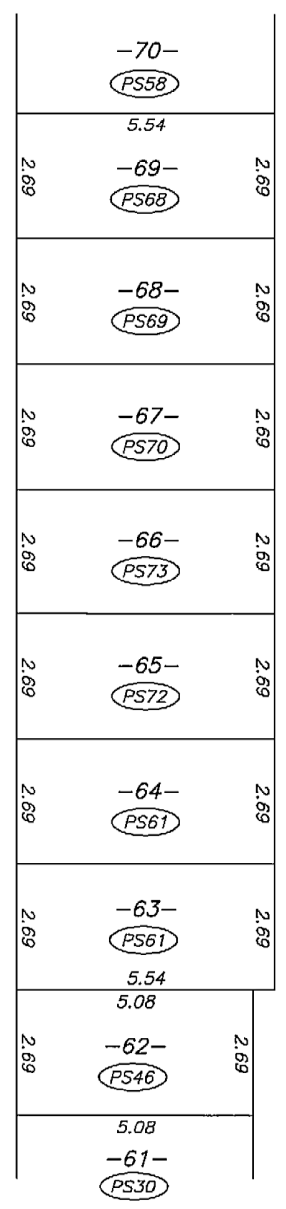
DRIVEWAY  
ⓐ

VOID  
ⓐ

DRIVEWAY  
ⓐ

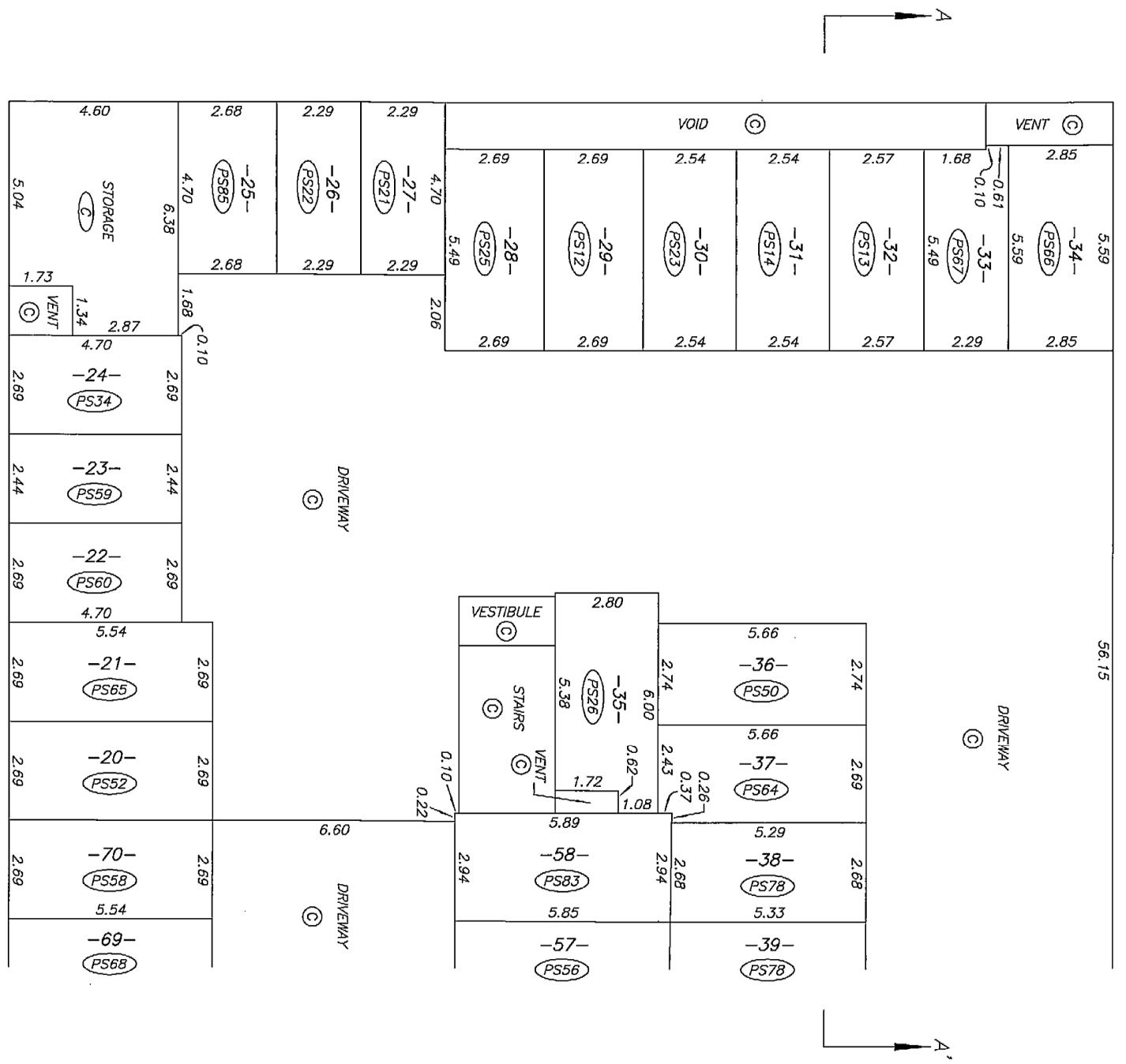
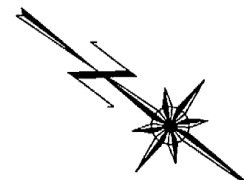
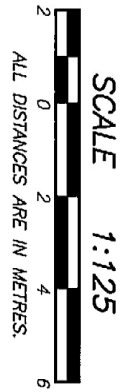


DRIVEWAY  
ⓐ



SEE SHEET #11  
MATCH LINE

MATCH LINE  
SEE SHEET #9

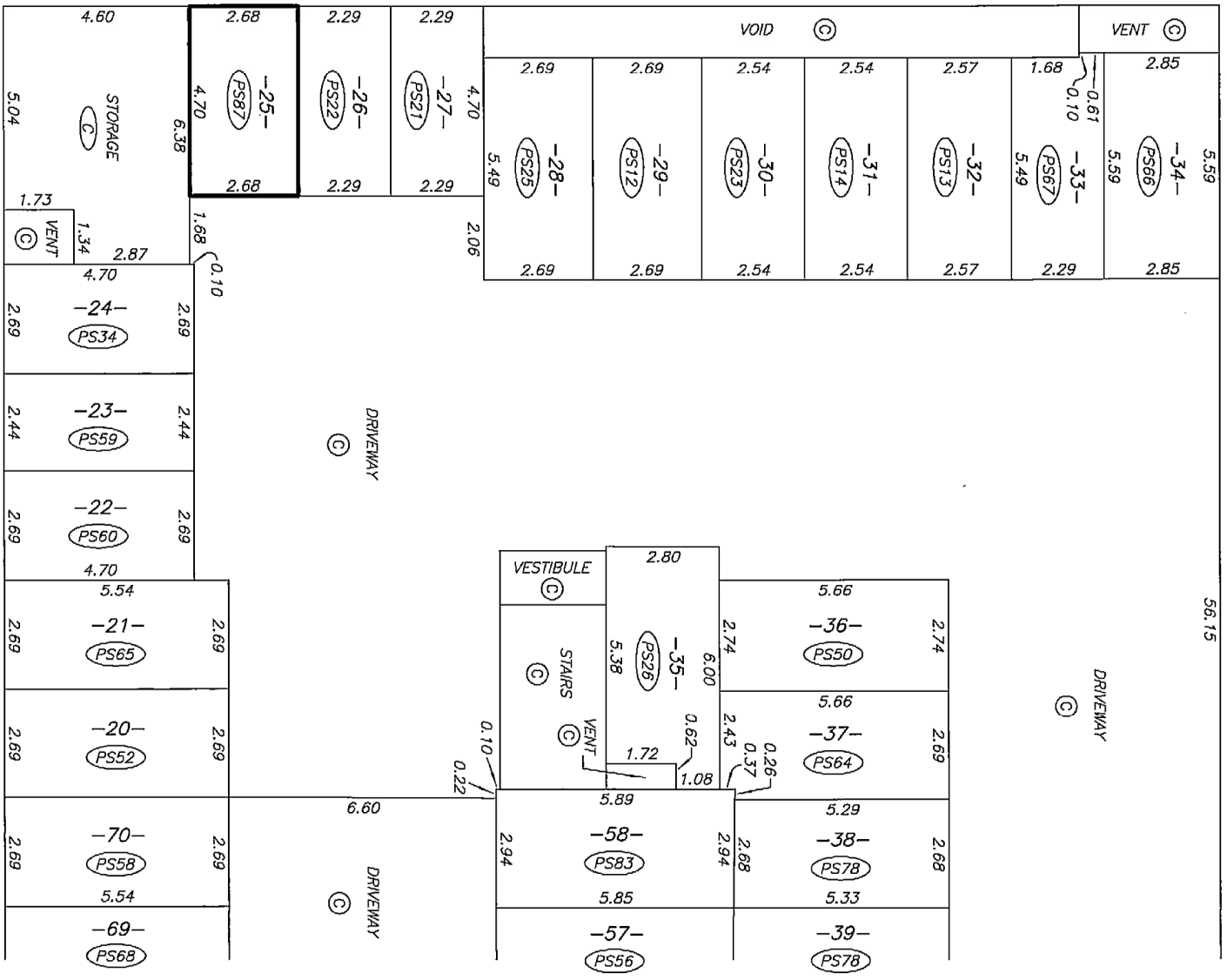
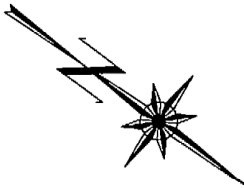


AMENDED PURSUANT TO SEC. 257  
 STRATA PROPERTY ACT.  
 THIS 15TH DAY SEPT 2006  
 SEE DRAWING SHEET 11A.

MATCH LINE  
 SEE SHEET #10

MATCH LINE  
 SEE SHEET #10

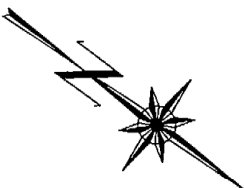
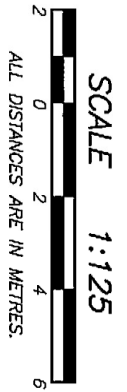
SCALE 1:125  
 ALL DISTANCES ARE IN METRES.



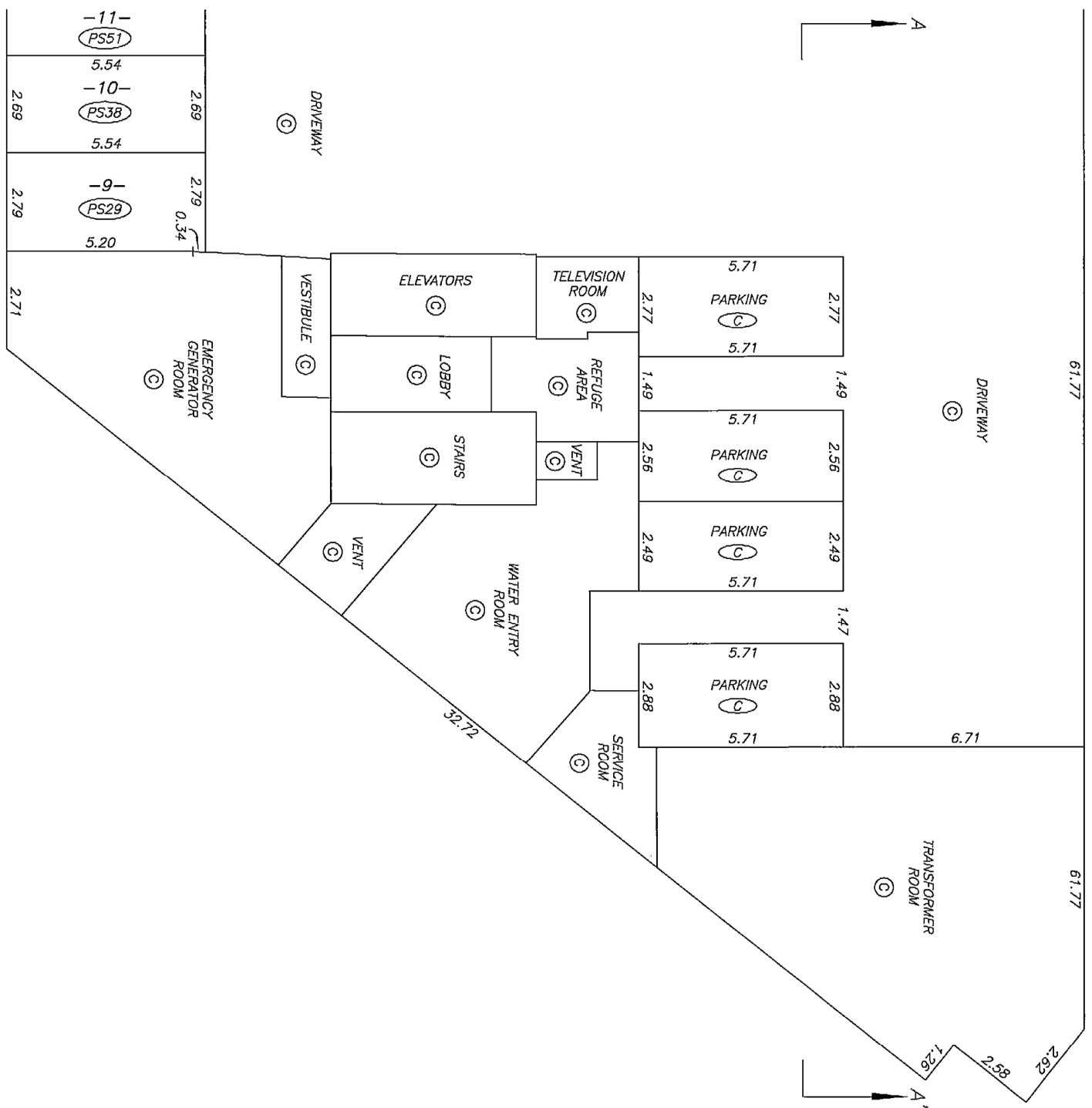
MATCH LINE  
 SEE SHEET #10

MATCH LINE  
 SEE SHEET #10



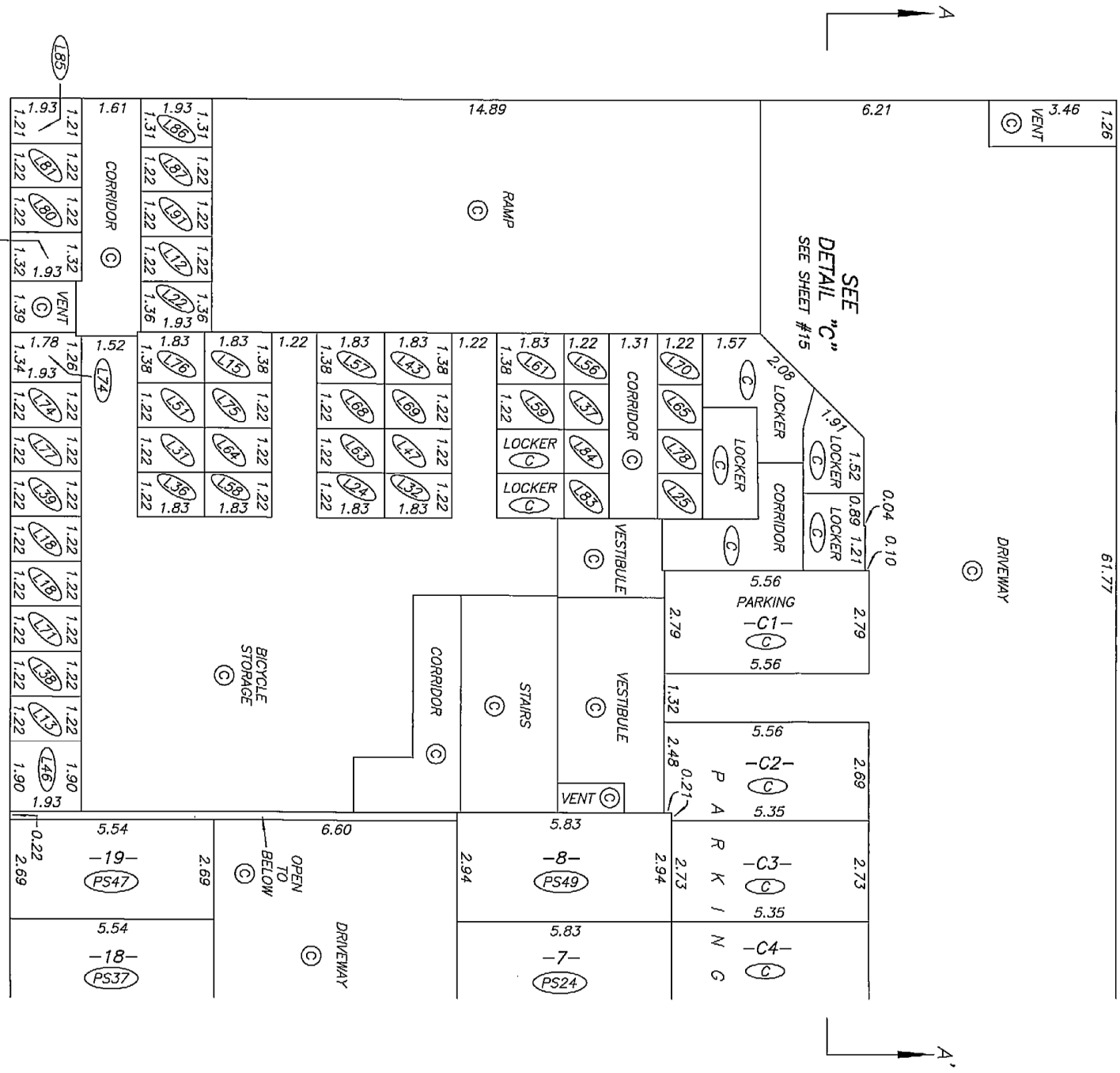
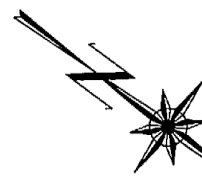


SEE SHEET #13  
MATCH LINE



SEE SHEET #13  
MATCH LINE





SEE  
DETAIL "C"  
SEE SHEET #15

SEE  
DETAIL "D"  
SEE SHEET #15

MATCH LINE  
SEE SHEET #13

MATCH LINE  
SEE SHEET #13



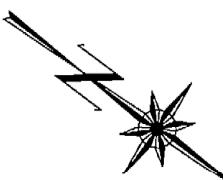








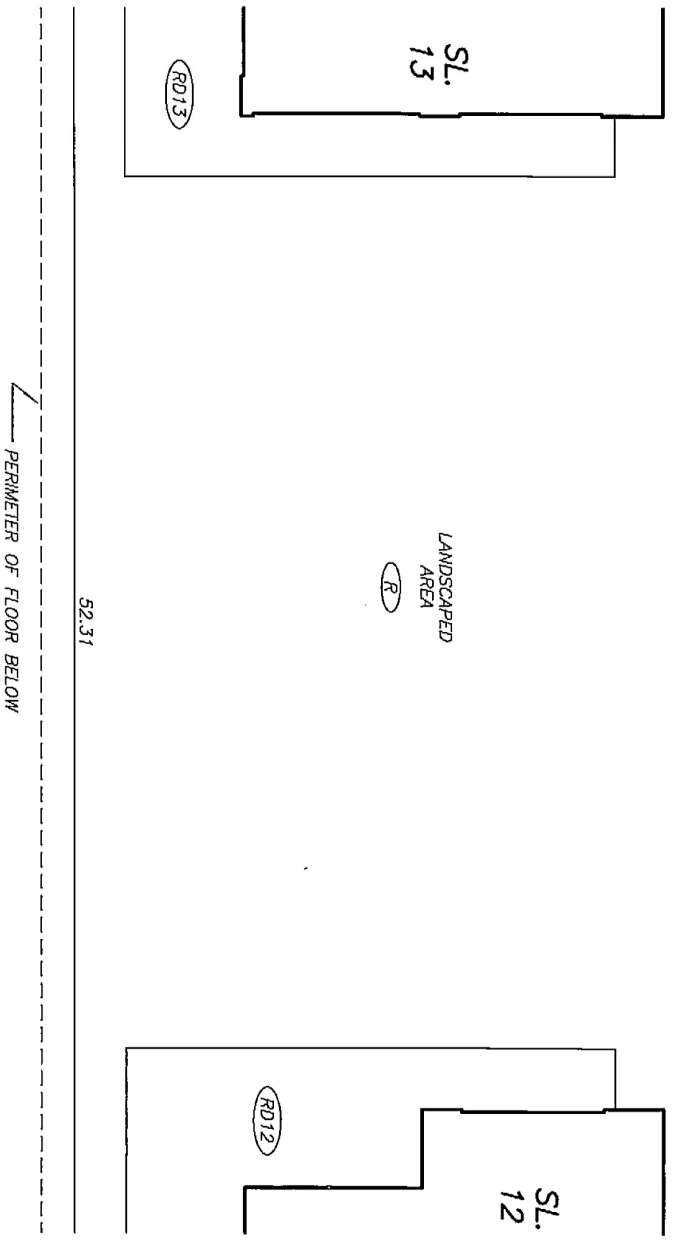
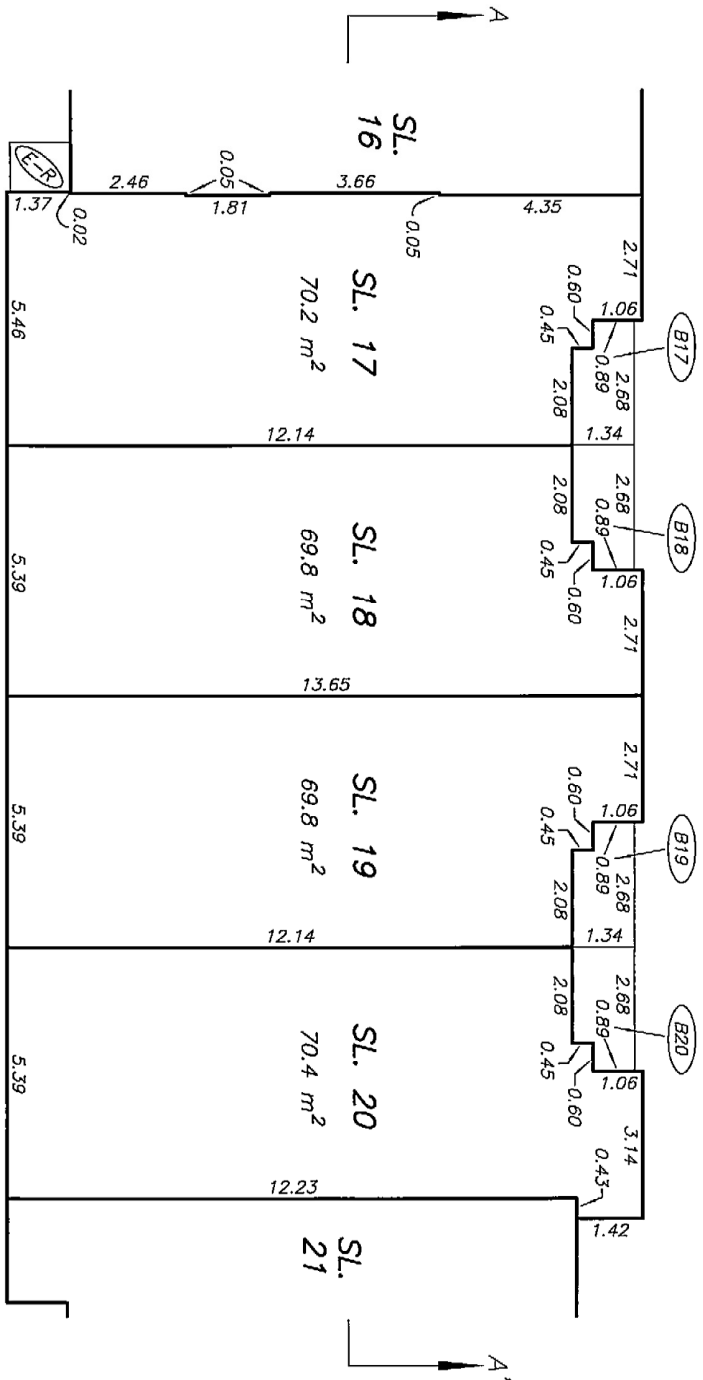




SEE SHEET #21  
MATCH LINE

MATCH LINE  
SEE SHEET #19

PERIMETER OF FLOOR BELOW



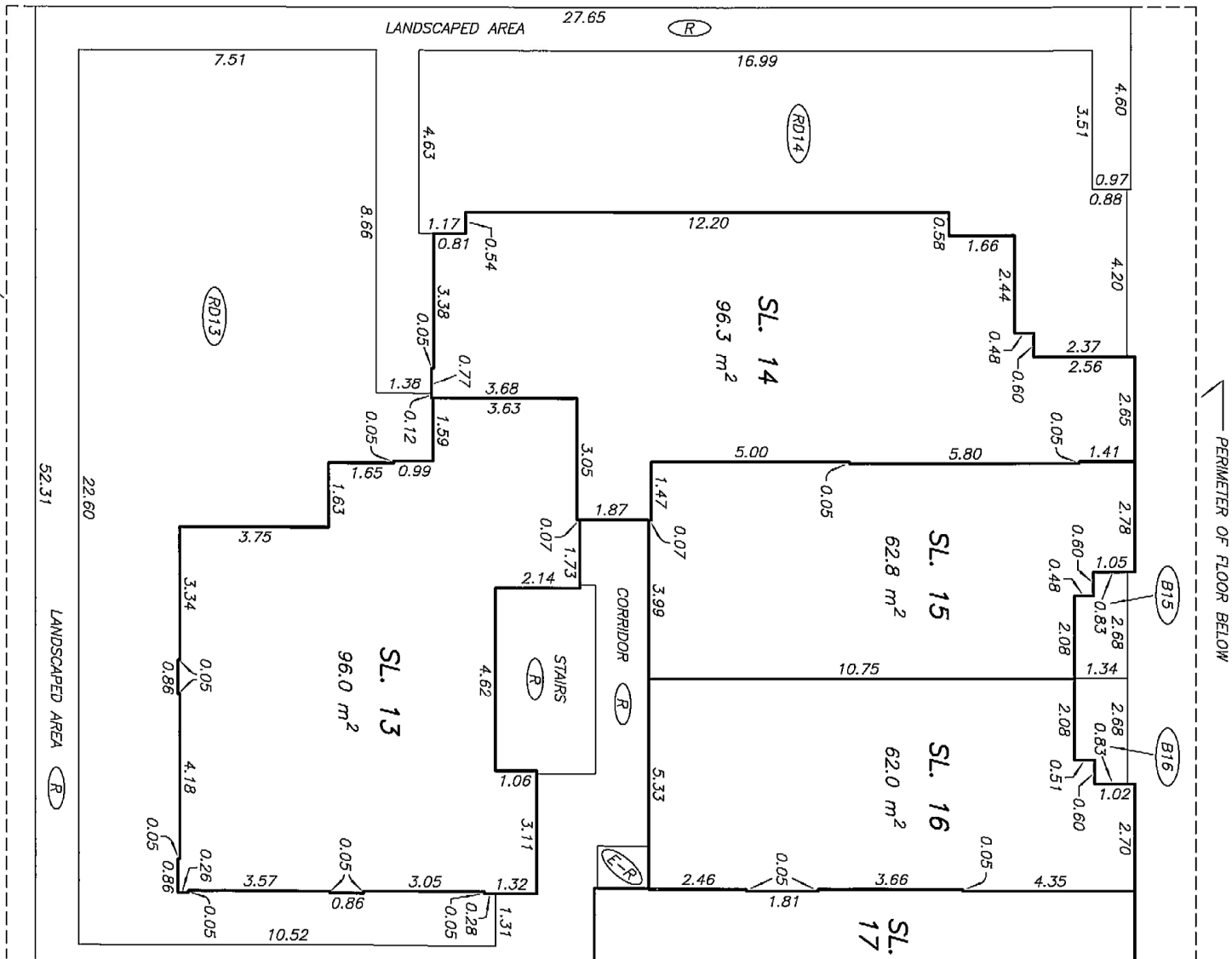
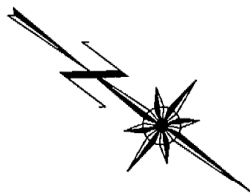
SEE SHEET #21  
MATCH LINE

MATCH LINE  
SEE SHEET #19

PERIMETER OF FLOOR BELOW

52.31

SCALE 1:125  
ALL DISTANCES ARE IN METRES.



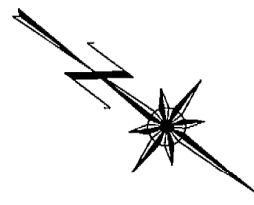
MATCH LINE  
SEE SHEET #20

MATCH LINE  
SEE SHEET #20

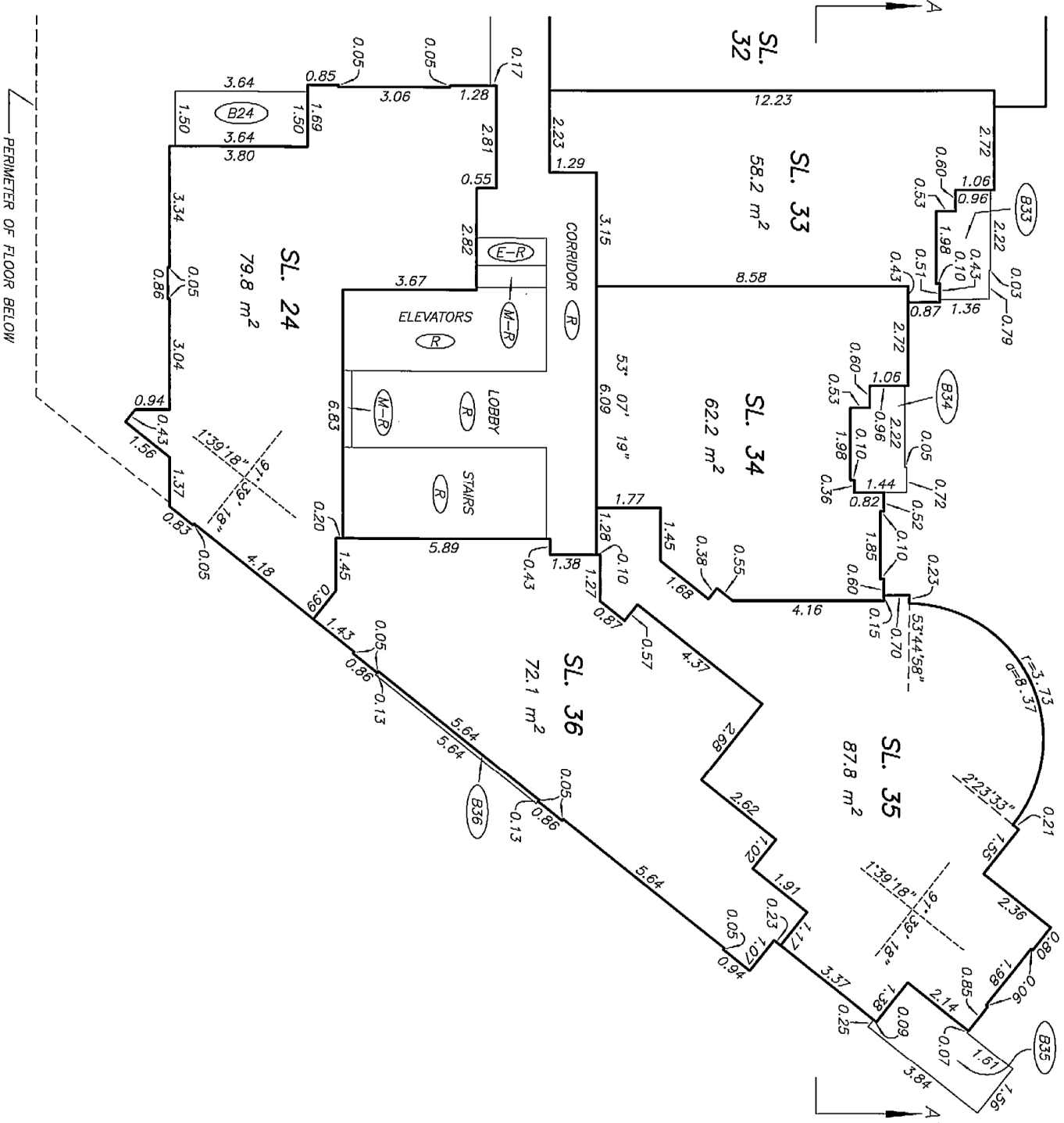
PERIMETER OF FLOOR BELOW

PERIMETER OF FLOOR BELOW

SCALE 1:125  
ALL DISTANCES ARE IN METRES.



SEE SHEET #23  
MATCH LINE



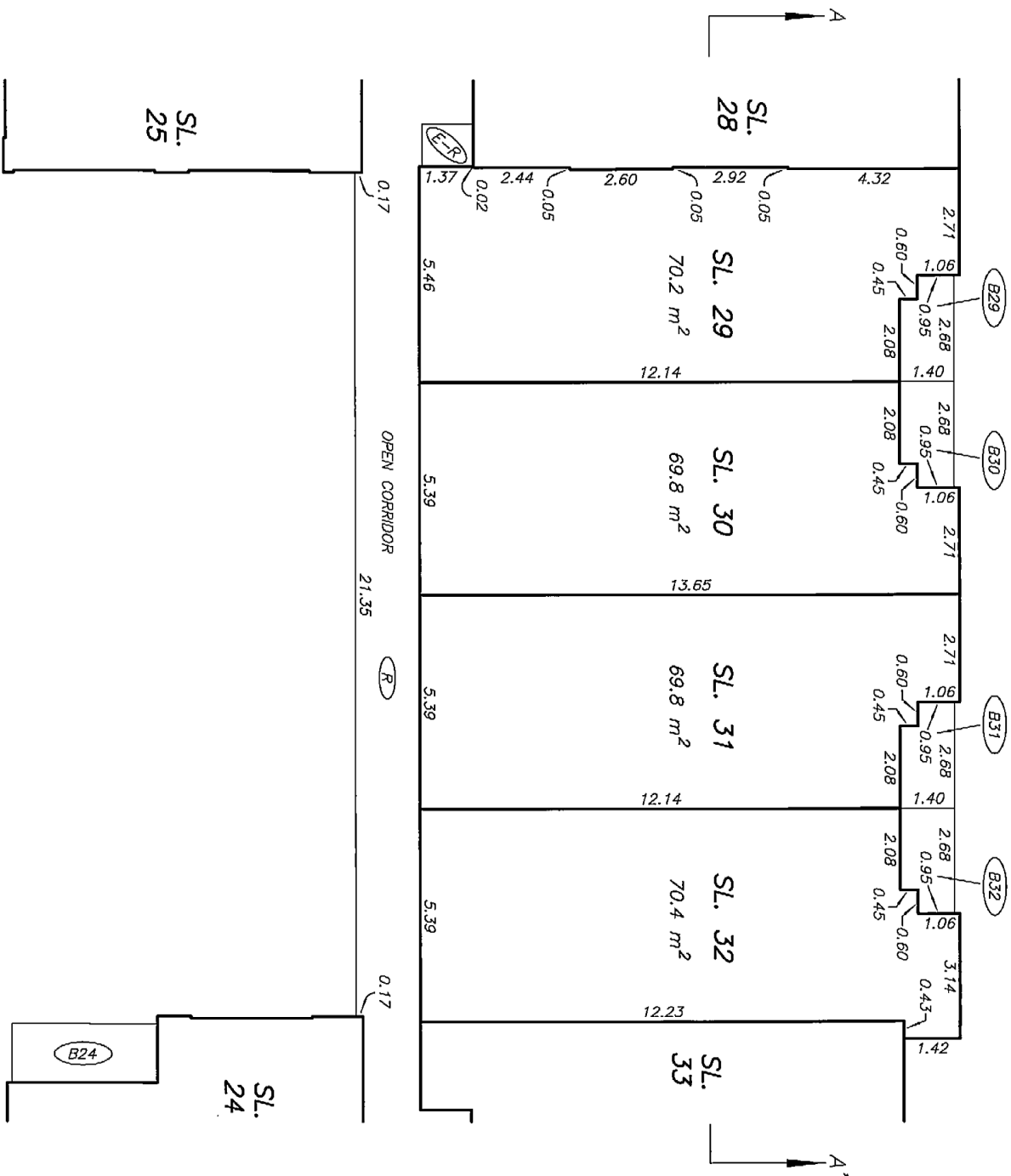
SEE SHEET #23  
MATCH LINE

PERIMETER OF FLOOR BELOW



SEE SHEET #24  
MATCH LINE

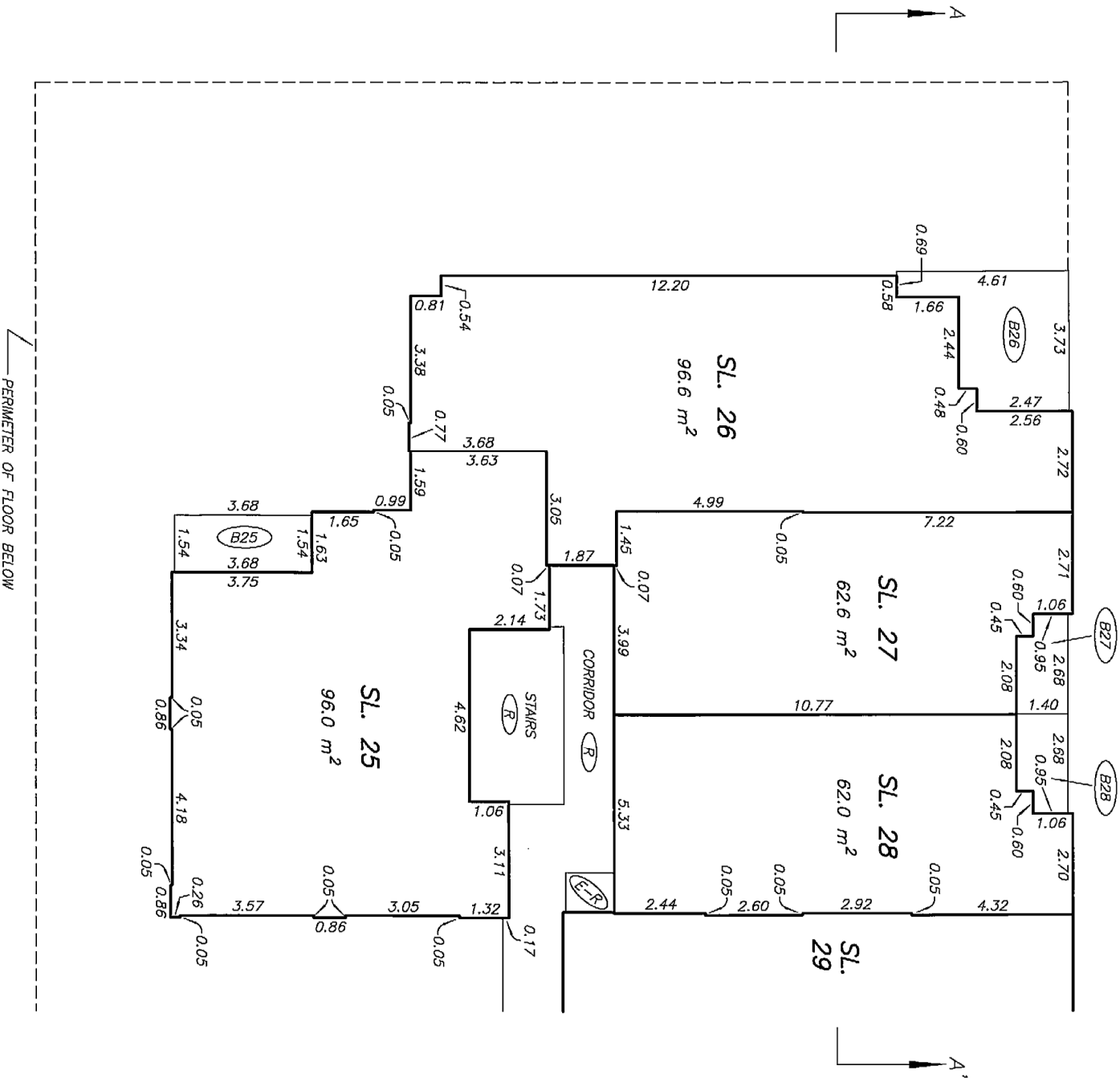
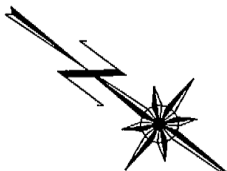
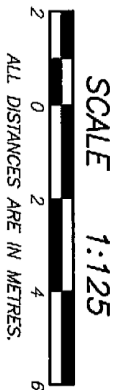
MATCH LINE  
SEE SHEET #22



SEE SHEET #24  
MATCH LINE

MATCH LINE  
SEE SHEET #22

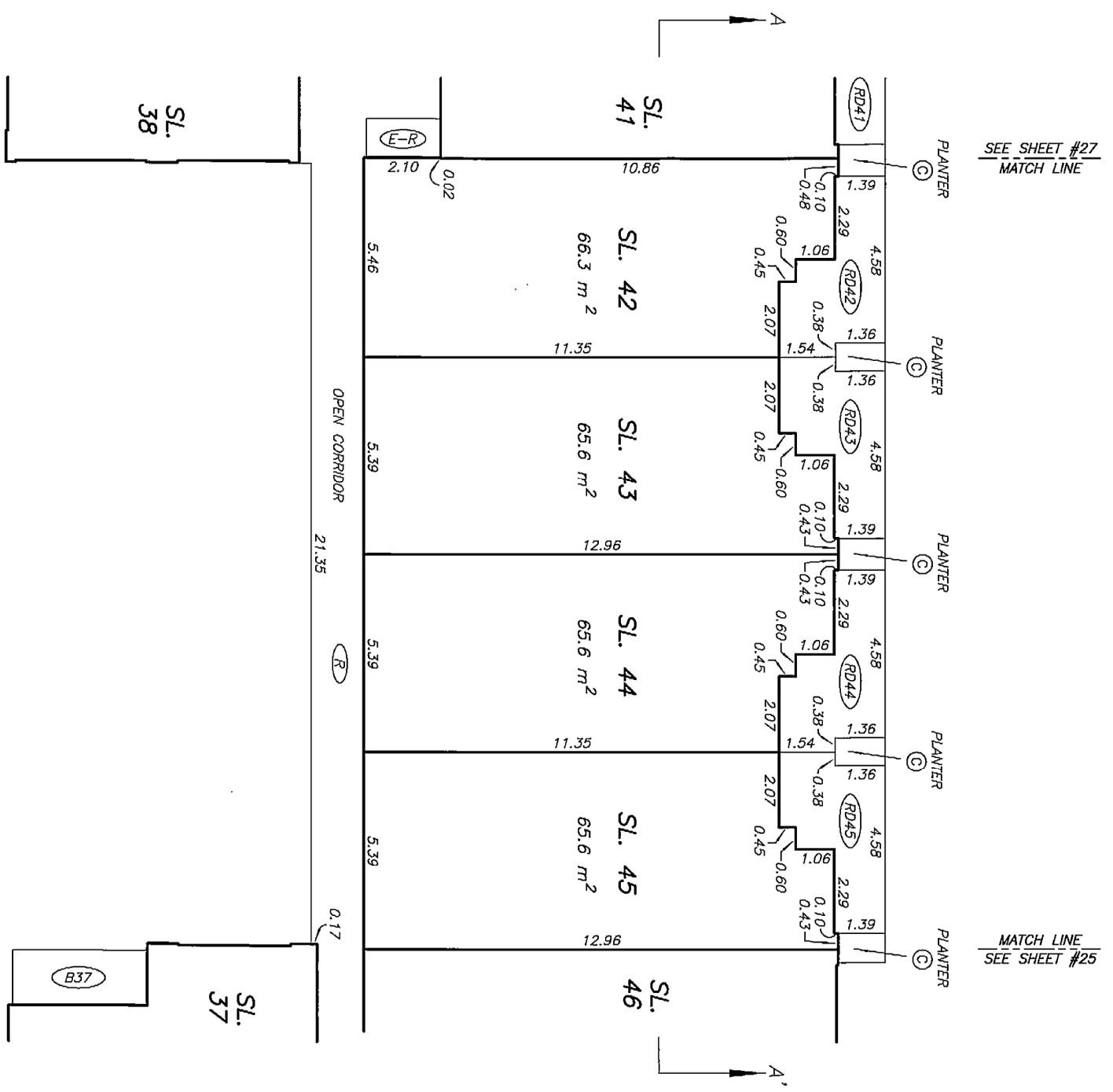
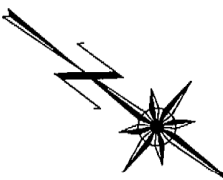
PERIMETER OF FLOOR BELOW



MATCH LINE  
SEE SHEET #23

MATCH LINE  
SEE SHEET #23



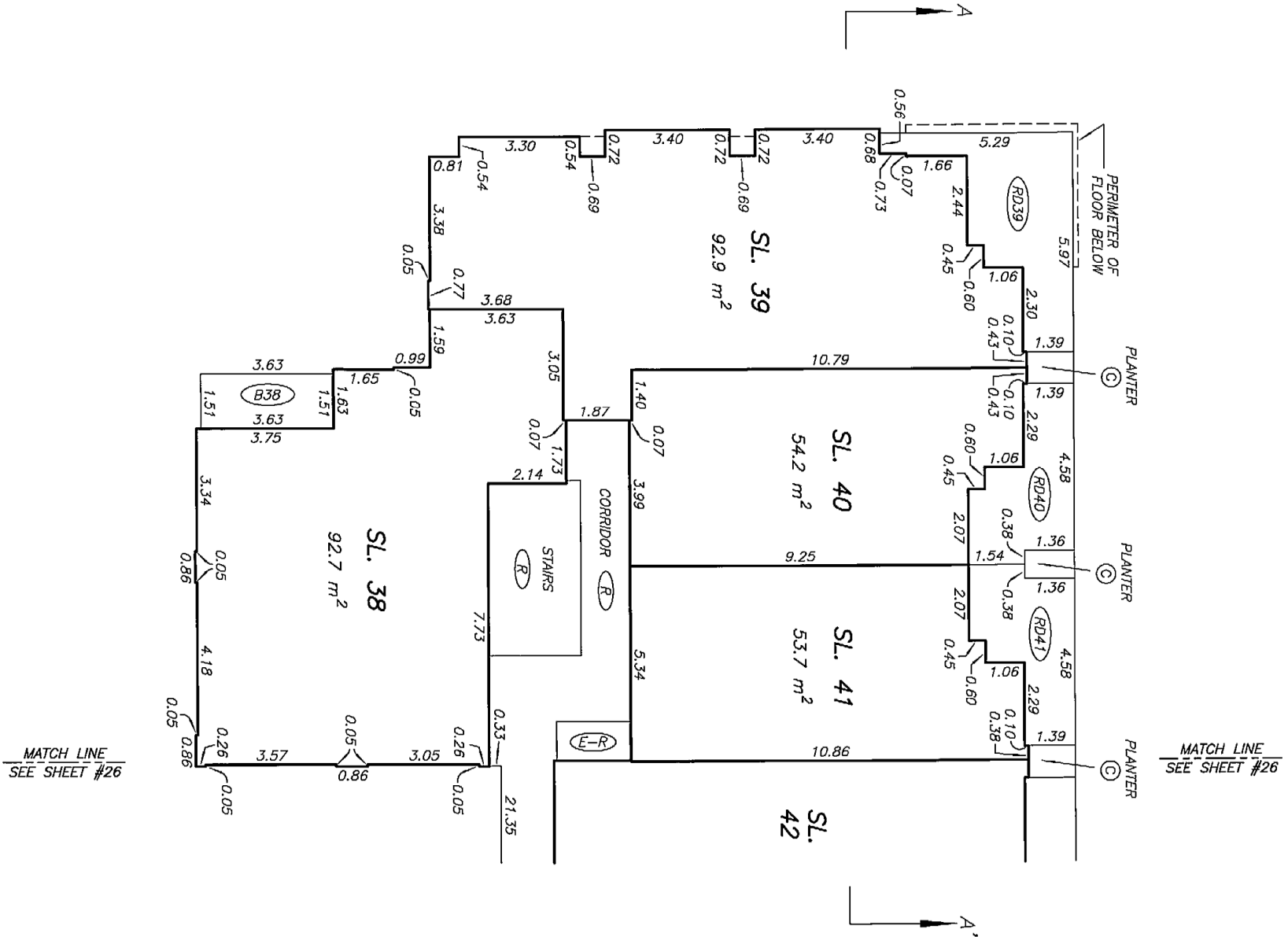
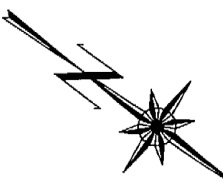
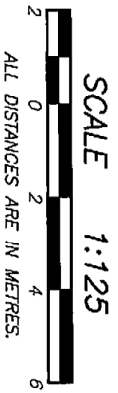


SEE SHEET #27  
MATCH LINE

MATCH LINE  
SEE SHEET #25

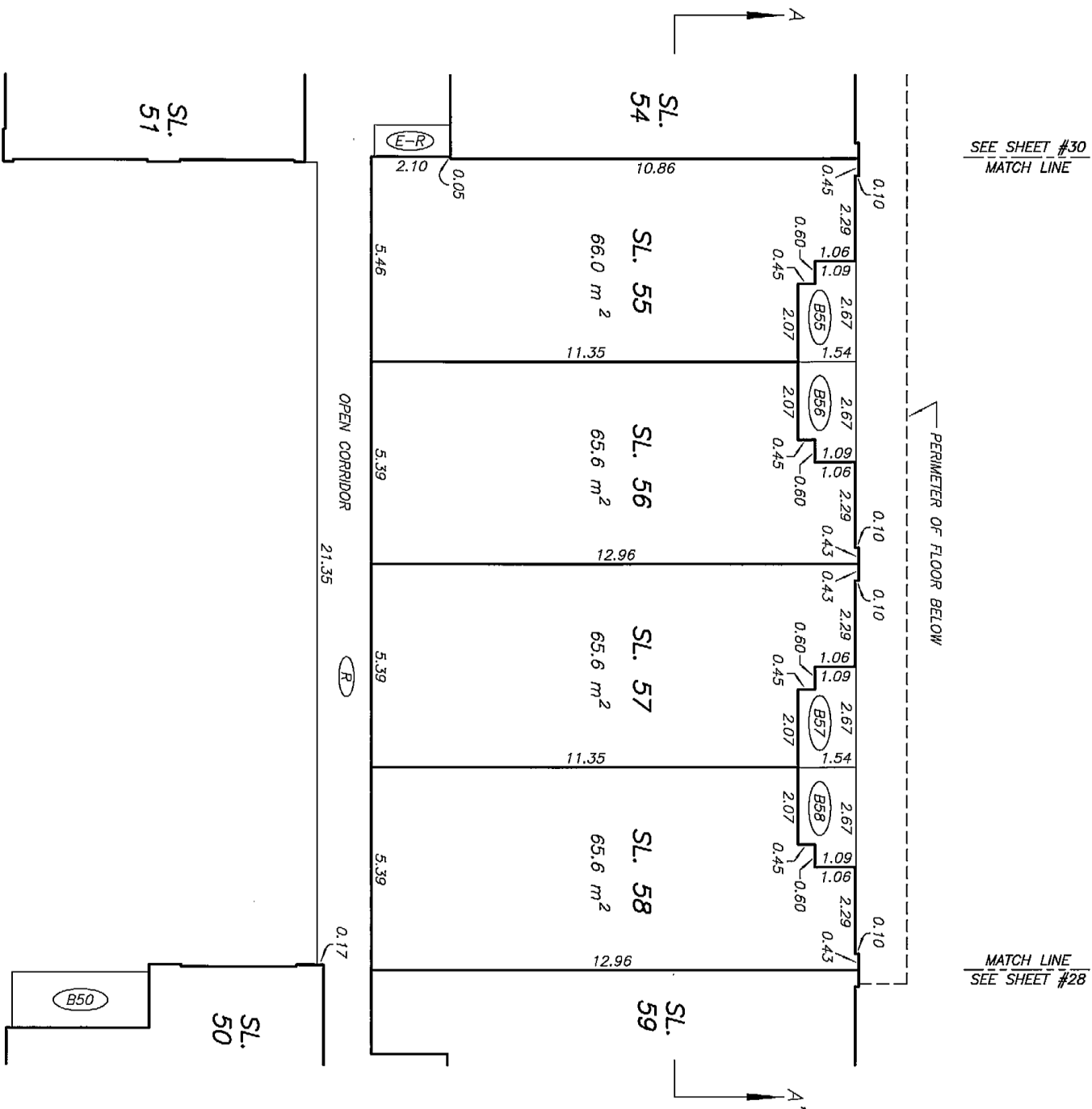
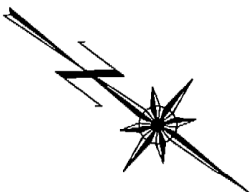
SEE SHEET #27  
MATCH LINE

MATCH LINE  
SEE SHEET #25

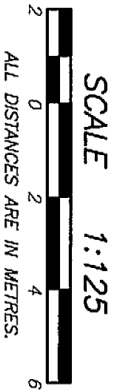




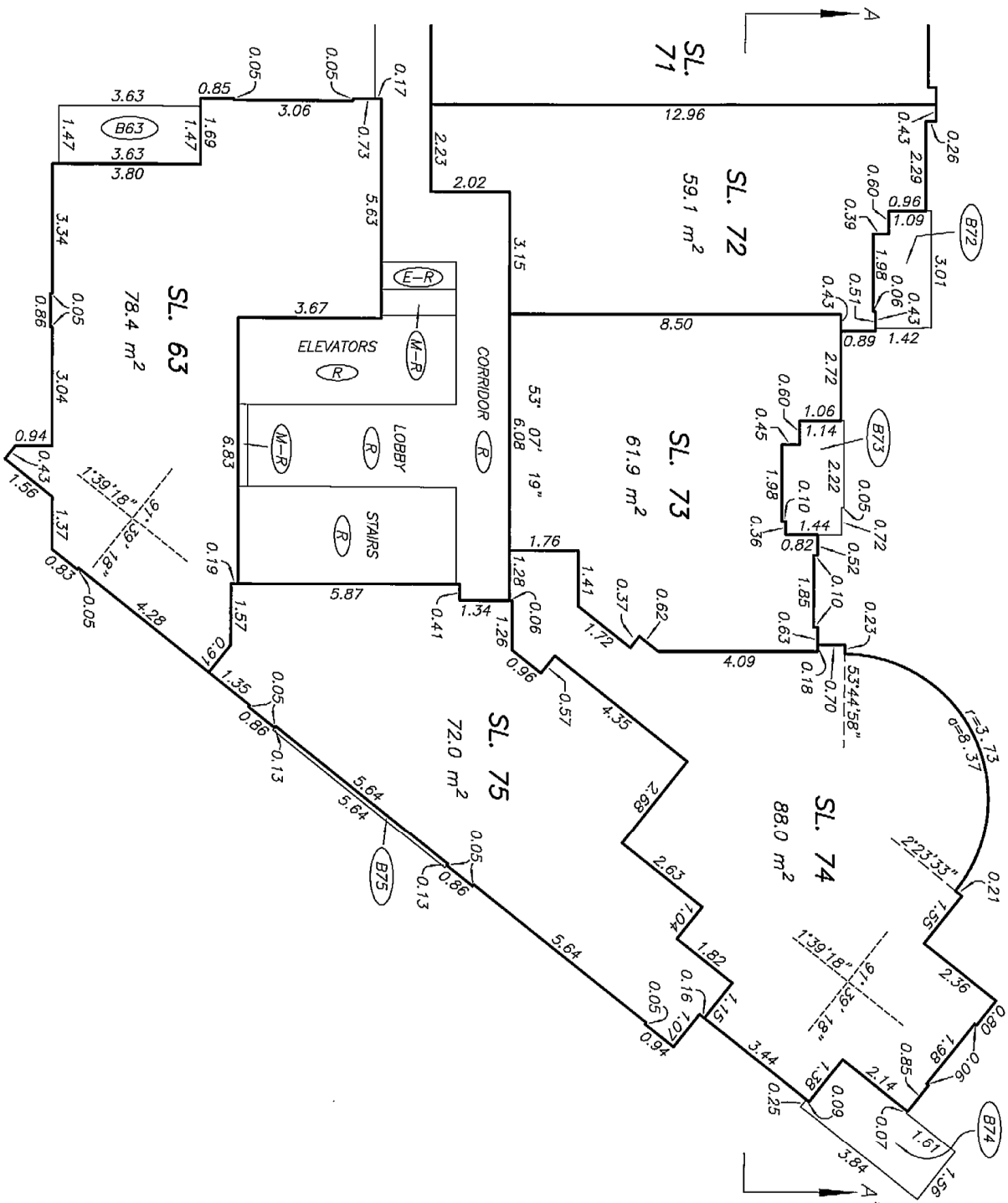




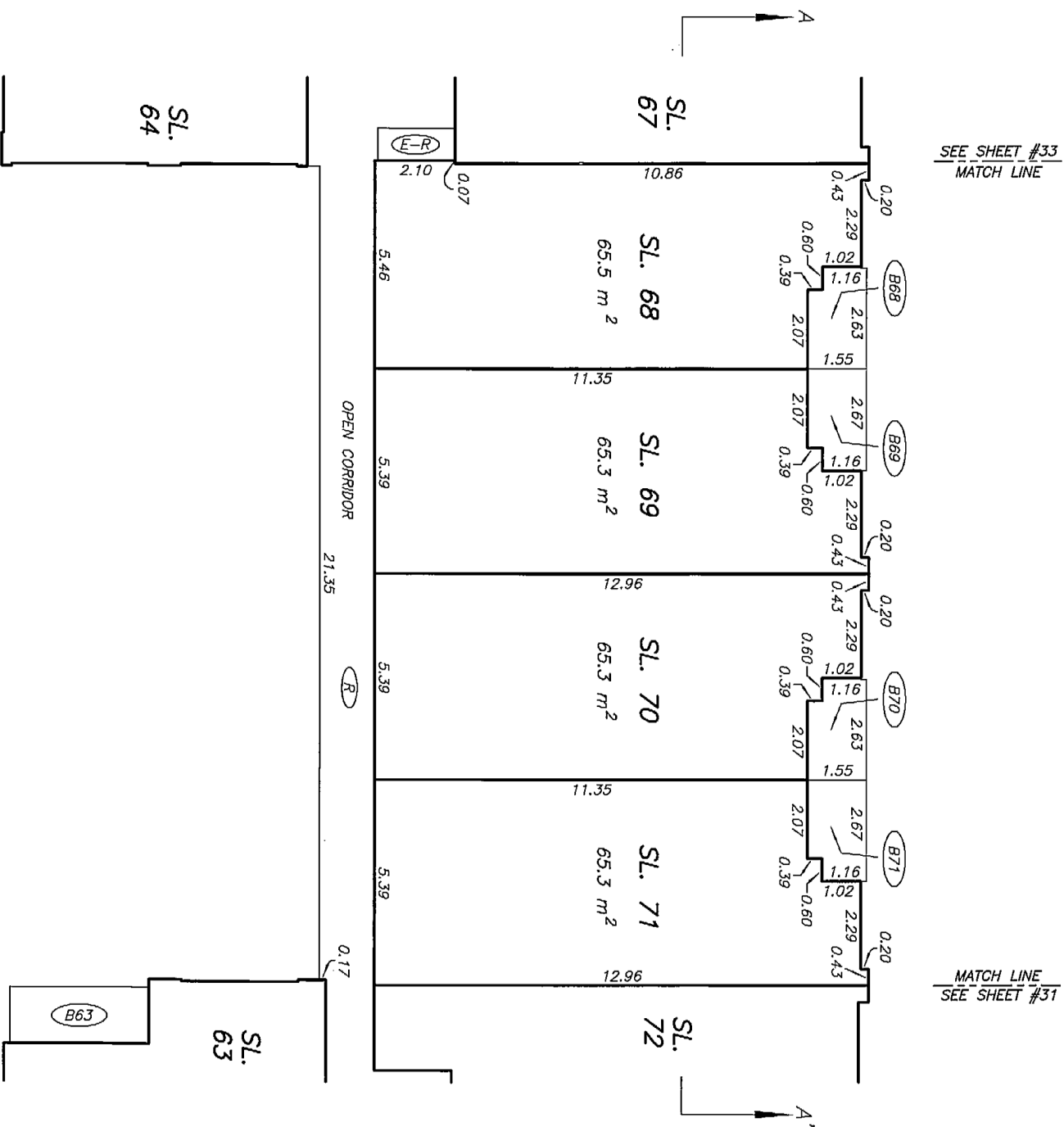
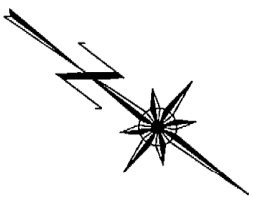
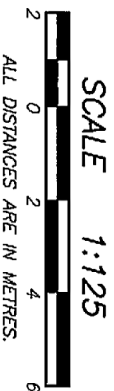




SEE SHEET #32  
MATCH LINE



SEE SHEET #32  
MATCH LINE



SEE SHEET #33  
MATCH LINE

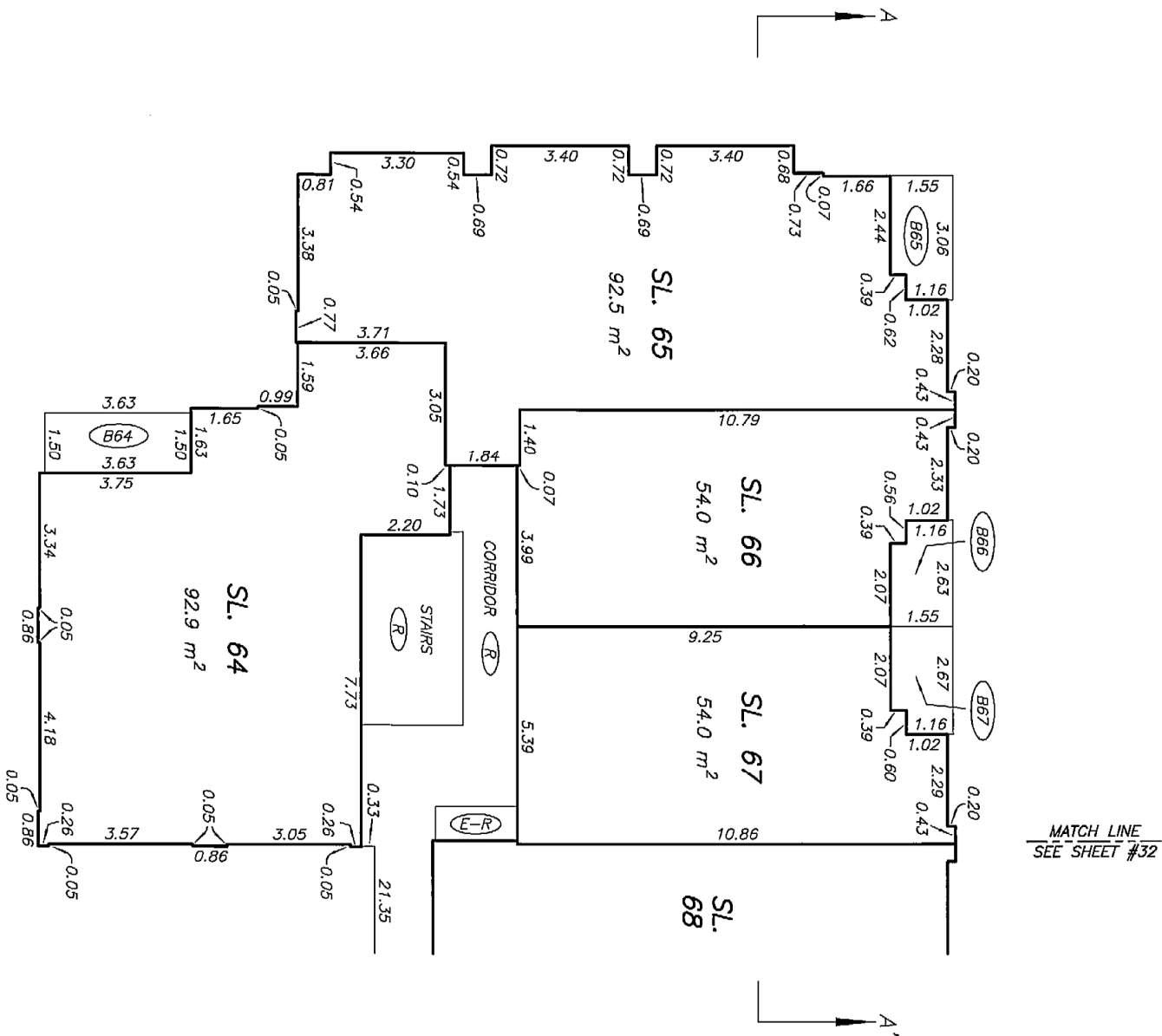
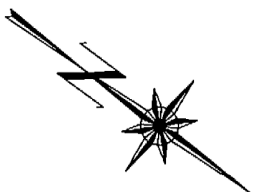
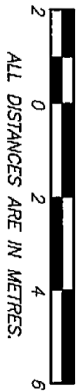
MATCH LINE  
SEE SHEET #31

SEE SHEET #33  
MATCH LINE

MATCH LINE  
SEE SHEET #31

WEST SECTION

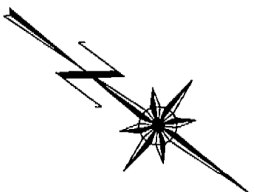
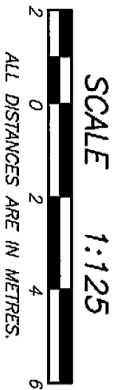
SCALE 1:125



MATCH LINE  
SEE SHEET #32

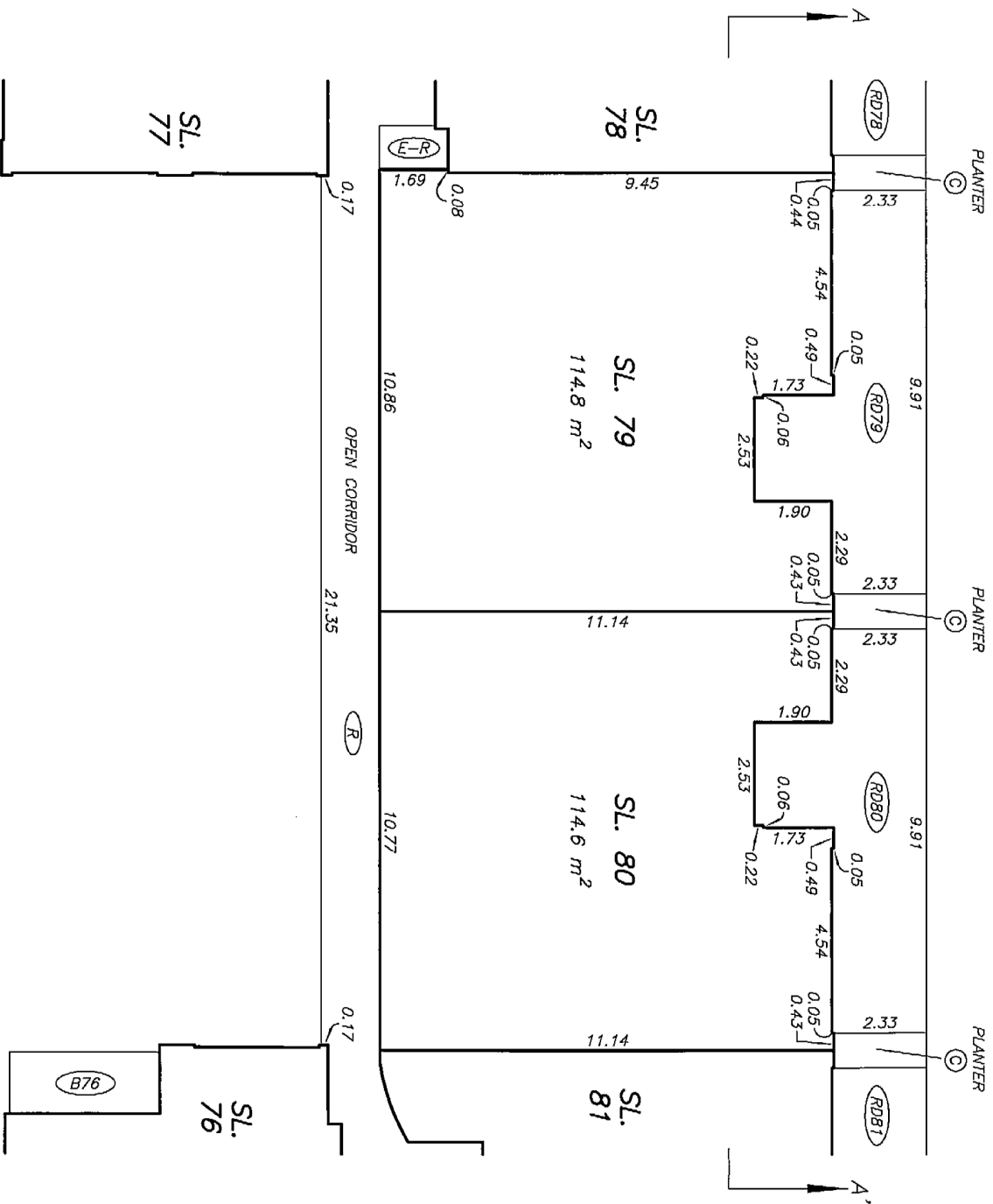
MATCH LINE  
SEE SHEET #32





SEE SHEET #36  
MATCH LINE

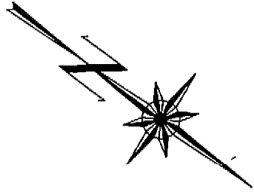
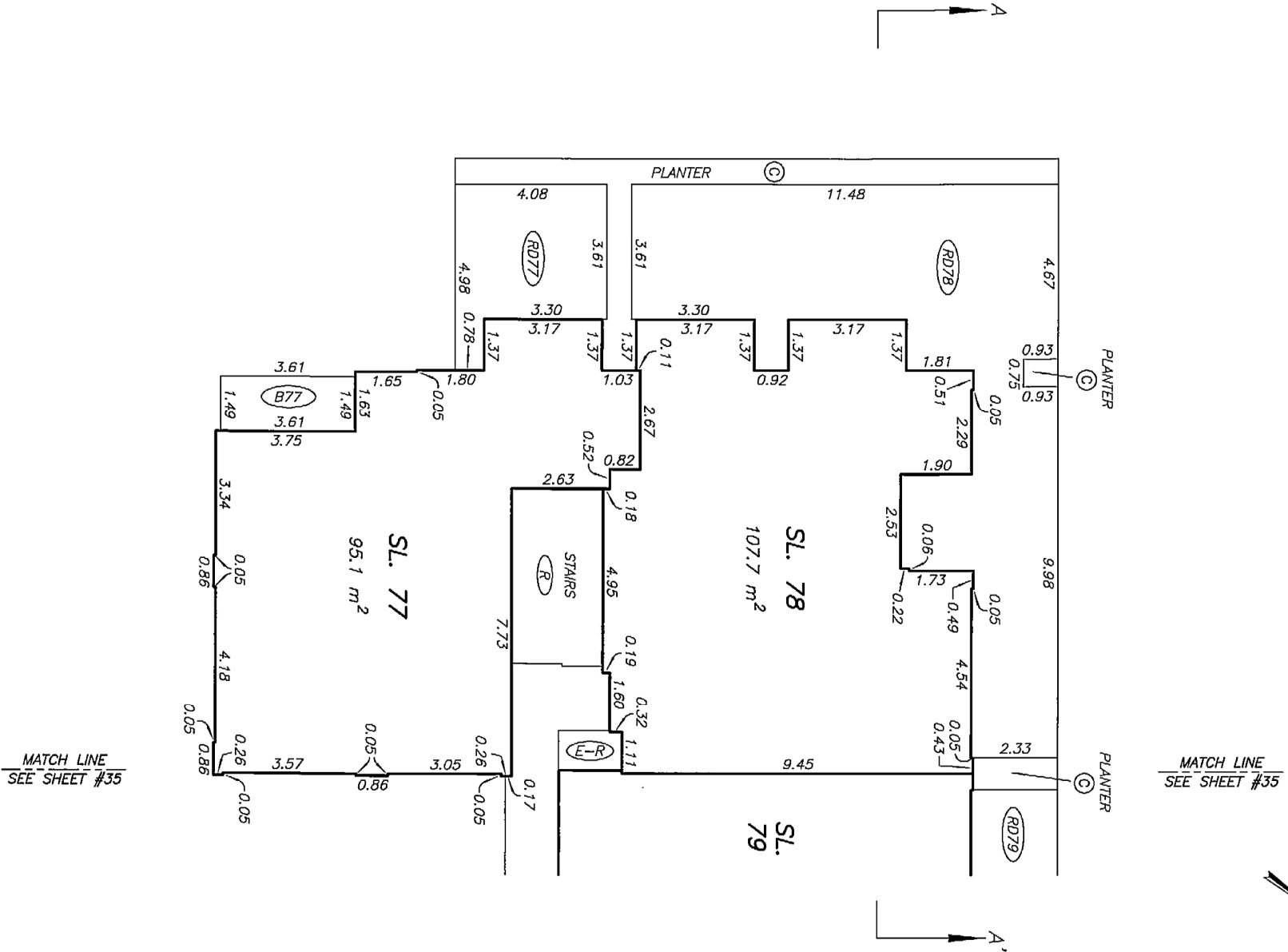
MATCH LINE  
SEE SHEET #34

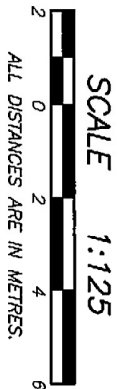


SEE SHEET #36  
MATCH LINE

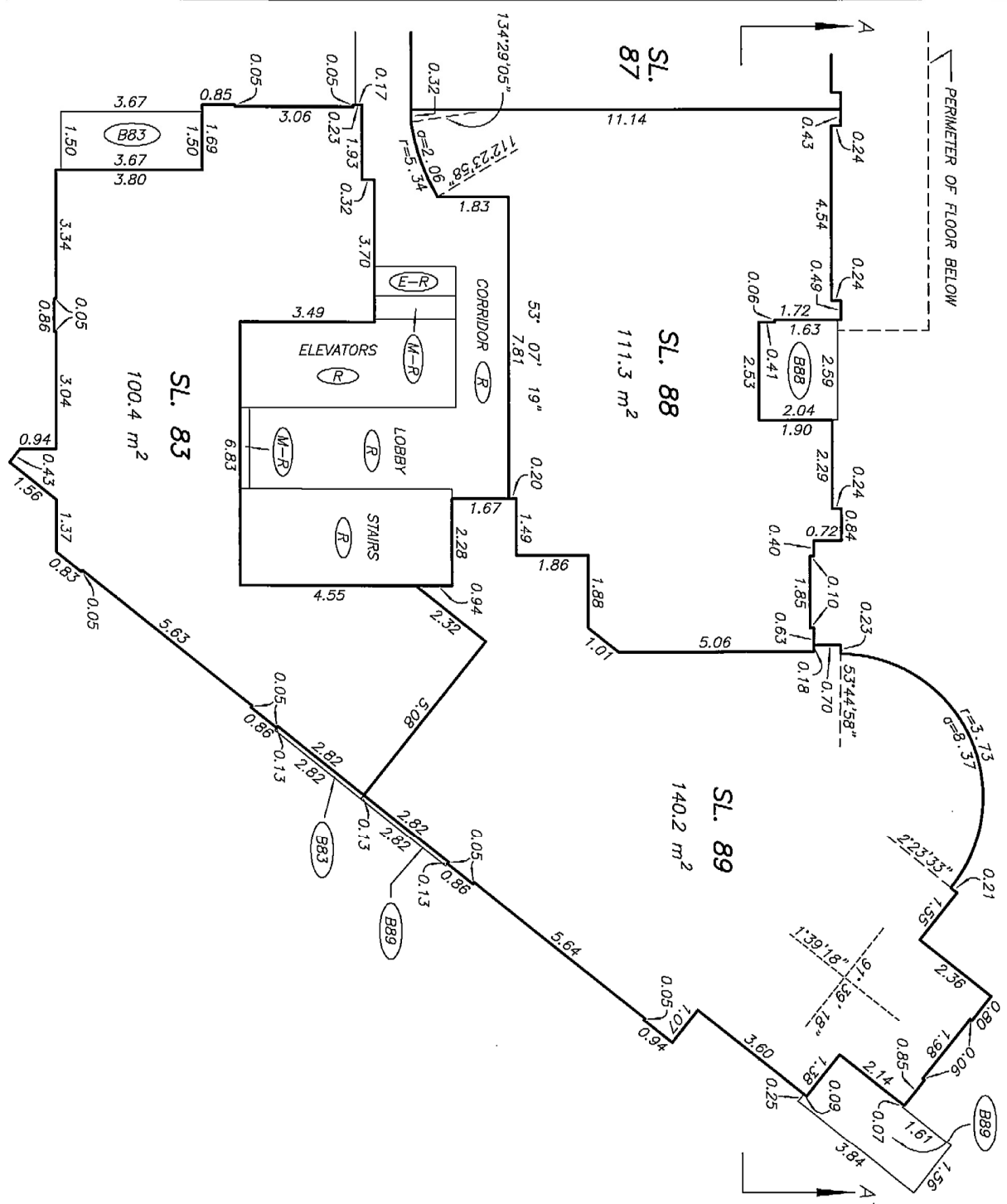
MATCH LINE  
SEE SHEET #34



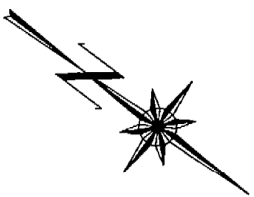
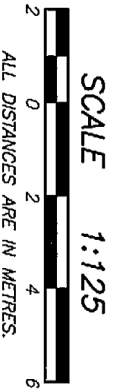




SEE SHEET #38  
MATCH LINE



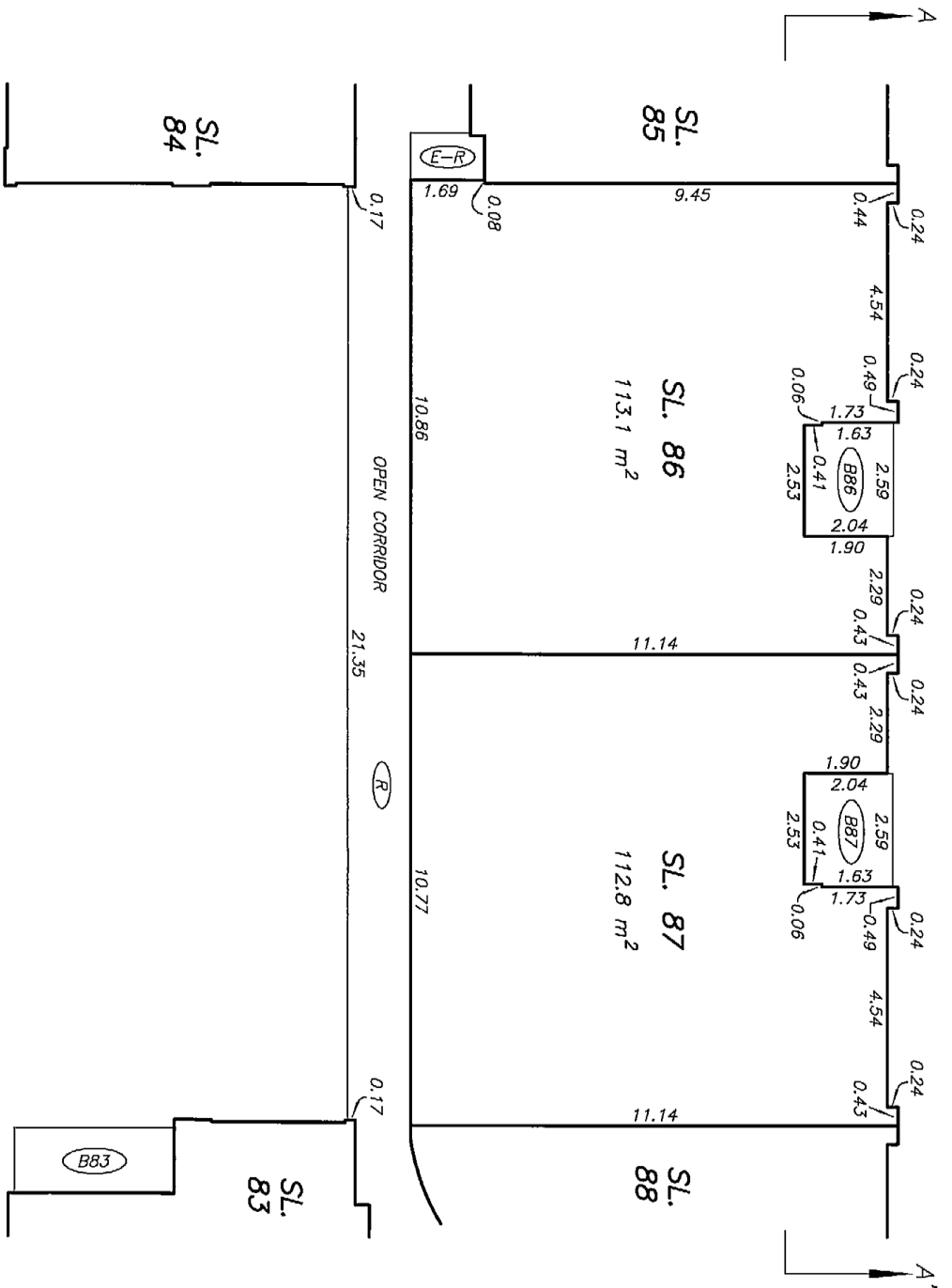
SEE SHEET #38  
MATCH LINE



SEE SHEET #39  
MATCH LINE

MATCH LINE  
SEE SHEET #37

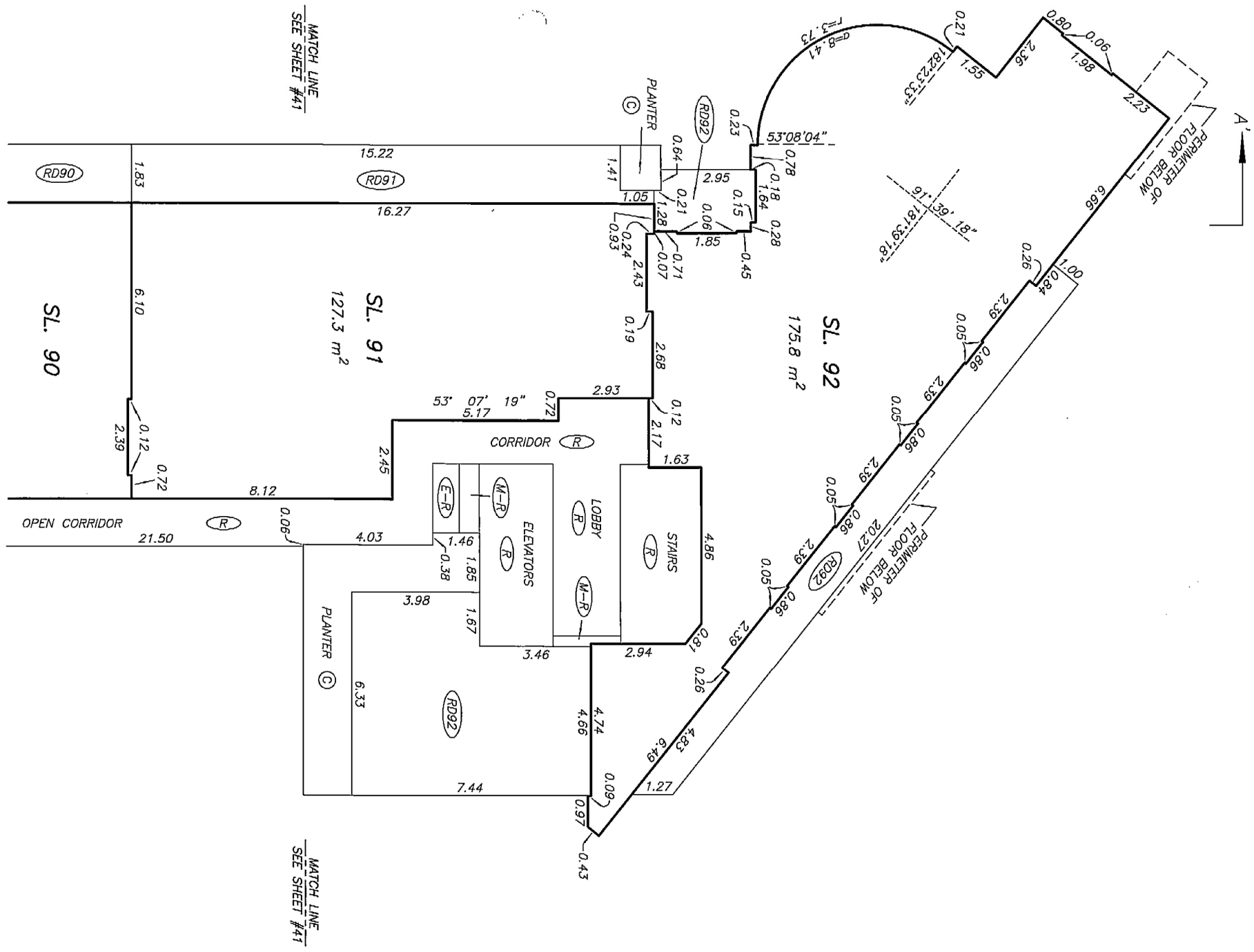
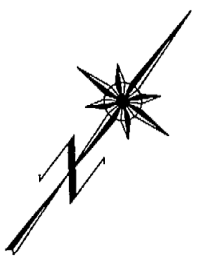
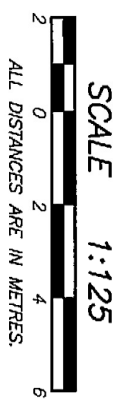
PERIMETER OF FLOOR BELOW

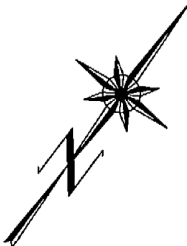
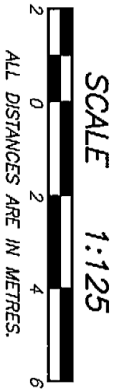


SEE SHEET #39  
MATCH LINE

MATCH LINE  
SEE SHEET #37

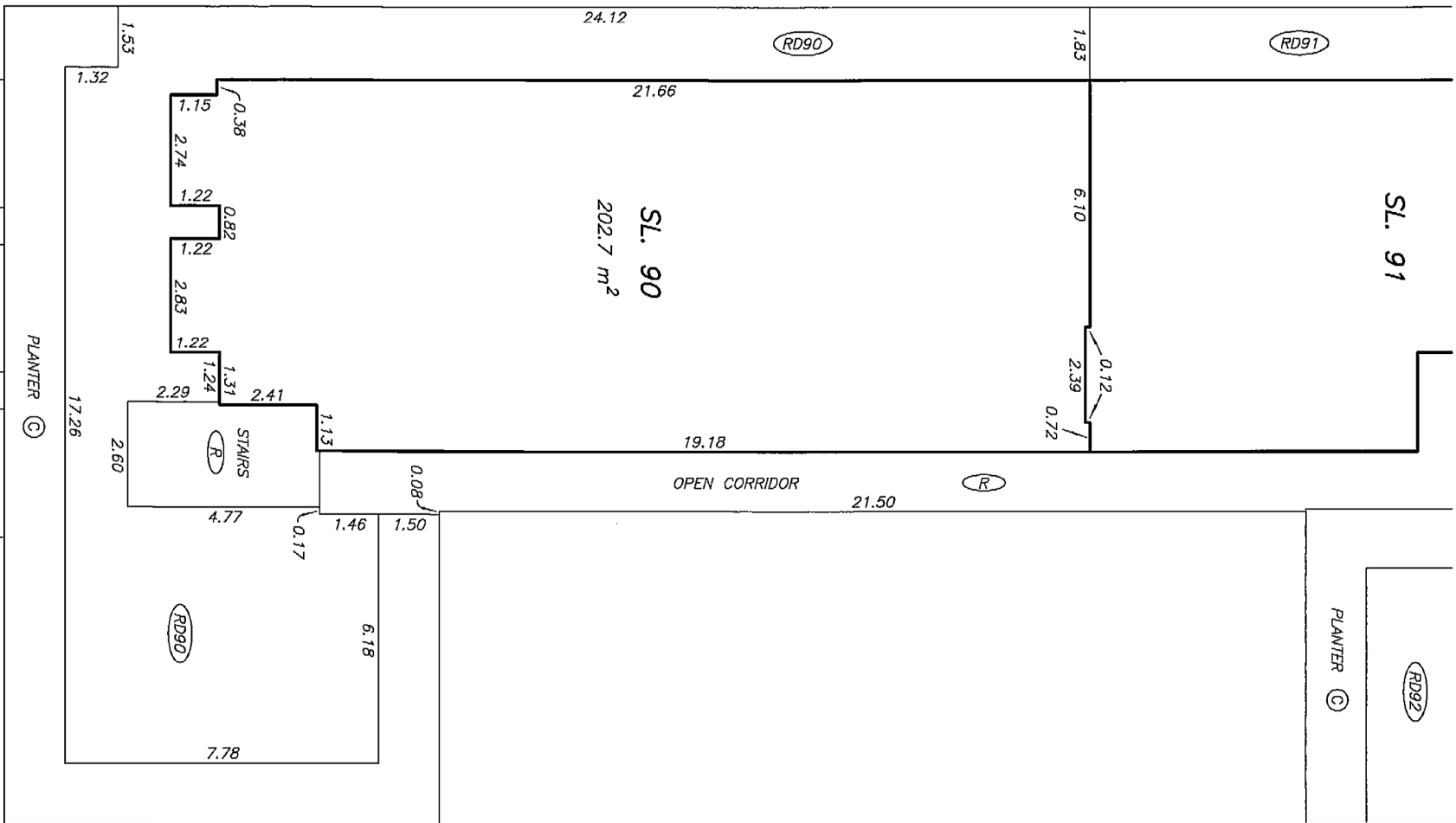






SEE SHEET #40  
MATCH LINE

SEE SHEET #40  
MATCH LINE



PERIMETER OF  
FLOOR BELOW





SEE SHEET #42  
MATCH LINE

SEE SHEET #42  
MATCH LINE

PERIMETER OF FLOOR BELOW

PERIMETER OF FLOOR BELOW

