

# Amble Greene

SOUTH SURREY



1820 Amble Greene Boulevard







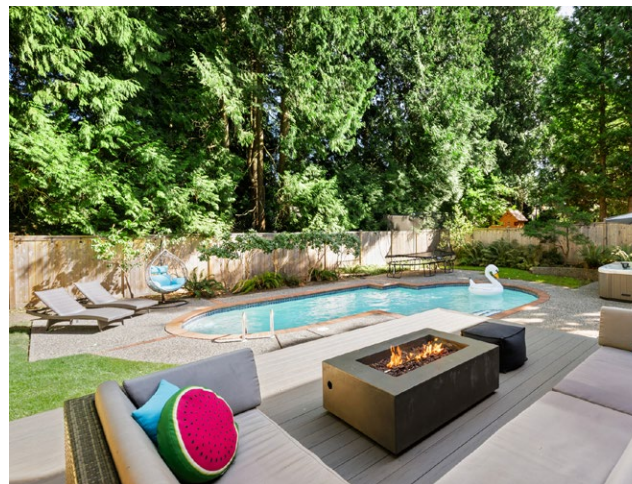
## *CONTEMPORARY AMBLE GREENE LIVING!*

COMPLETELY UPDATED - Featuring 4 beds, 3 baths + office & backyard oasis with pool and Gym. Large, ultra-private 9236sf lot, backing on protected greenbelt & across from park. Premium kitchen includes LG Studio appliances w/Gas range & Instaview Fridge. Designer fixtures, LED lighting, smart home system, integrated audio / lighting & EV vehicle charger. Huge outdoor composite deck with natural gas fire table. Over \$200,000 spent on updates inside & out bringing this contemporary home to life. Enjoy short walk to LaRonde Elementary & Elgin Park Secondary, shops at Ocean Park Village & extensive trails in the area.

For additional photos & details please scan the QR code













MEASUREMENTS ARE FOR PROMOTIONAL PURPOSES ONLY & ARE NOT FOR CONSTRUCTION USE

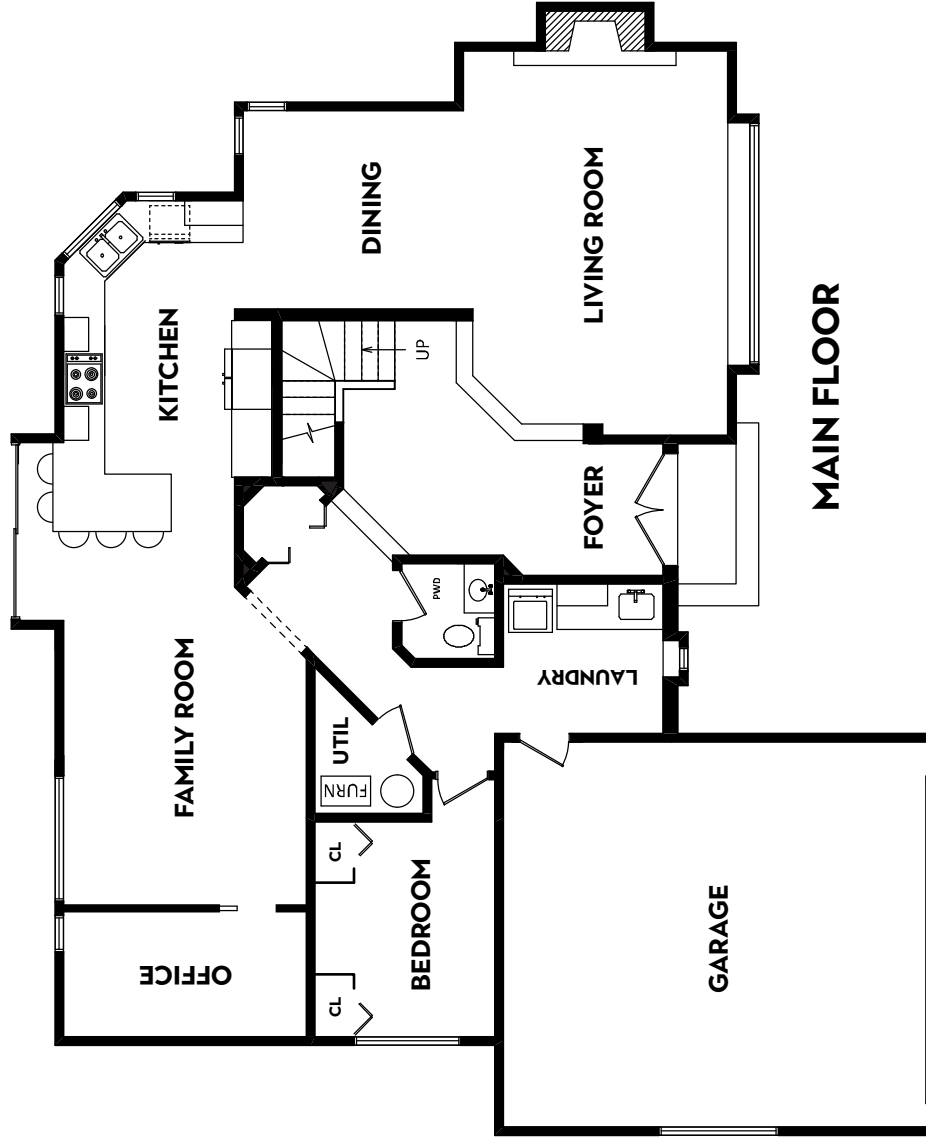
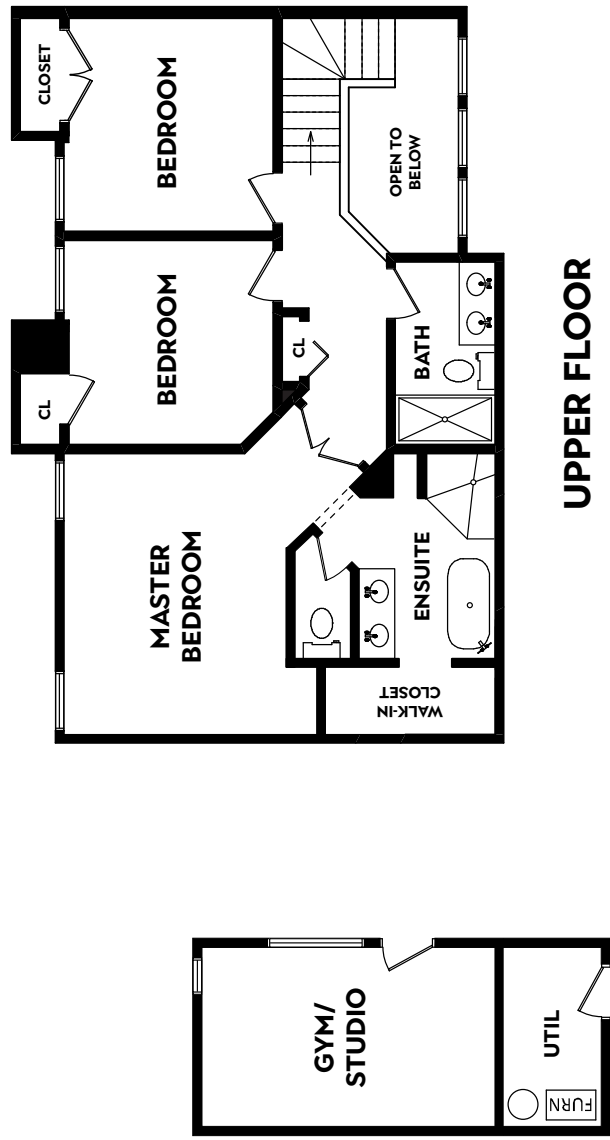
SCALE: 0 2 5 10 FT

RE/MAX Colonial Pacific Realty

PHONE (604) 541-4888

EMAIL [maureenfritz@remax.net](mailto:maureenfritz@remax.net)

MORE INFO ONLINE AT: [www.maureenfritz.ca](http://www.maureenfritz.ca)



MAIN FLOOR 1404 SF  
 UPPER FLOOR 771 SF  
 GYM/STUDIO 153 SF  
**TOTAL FINISHED AREA: 2328 SF**  
 GARAGE / UTILITY 508 SF