

AMAZING LOCATION

Ocean Park

2512 138TH ST, SOUTH SURREY

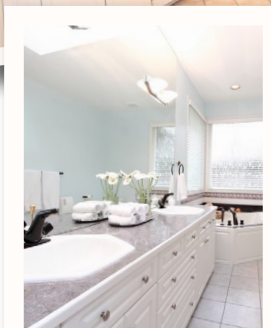
Peninsula Park Rancher...

This spacious luxury rancher could not be in a better location. Located within a short walk of the area's top schools, parks and playgrounds, it is perfect for all ages.

Spacious room sizes are an understatement - your furniture will definitely fit in here. Wide hallways and ample doorways could even accommodate a wheelchair for those requiring accessible living.

The open kitchen/family room and eating area are the heart of this spectacular home. Patio doors lead to a fantastic private backyard boasting an enormous deck, large hot tub, and natural gas connection for BBQ entertaining.

Surrounded by mature cedar hedging, your privacy is intact & there is still room for the kids to play. This home offers something for everyone and is a pleasure to show. Come see for yourself!



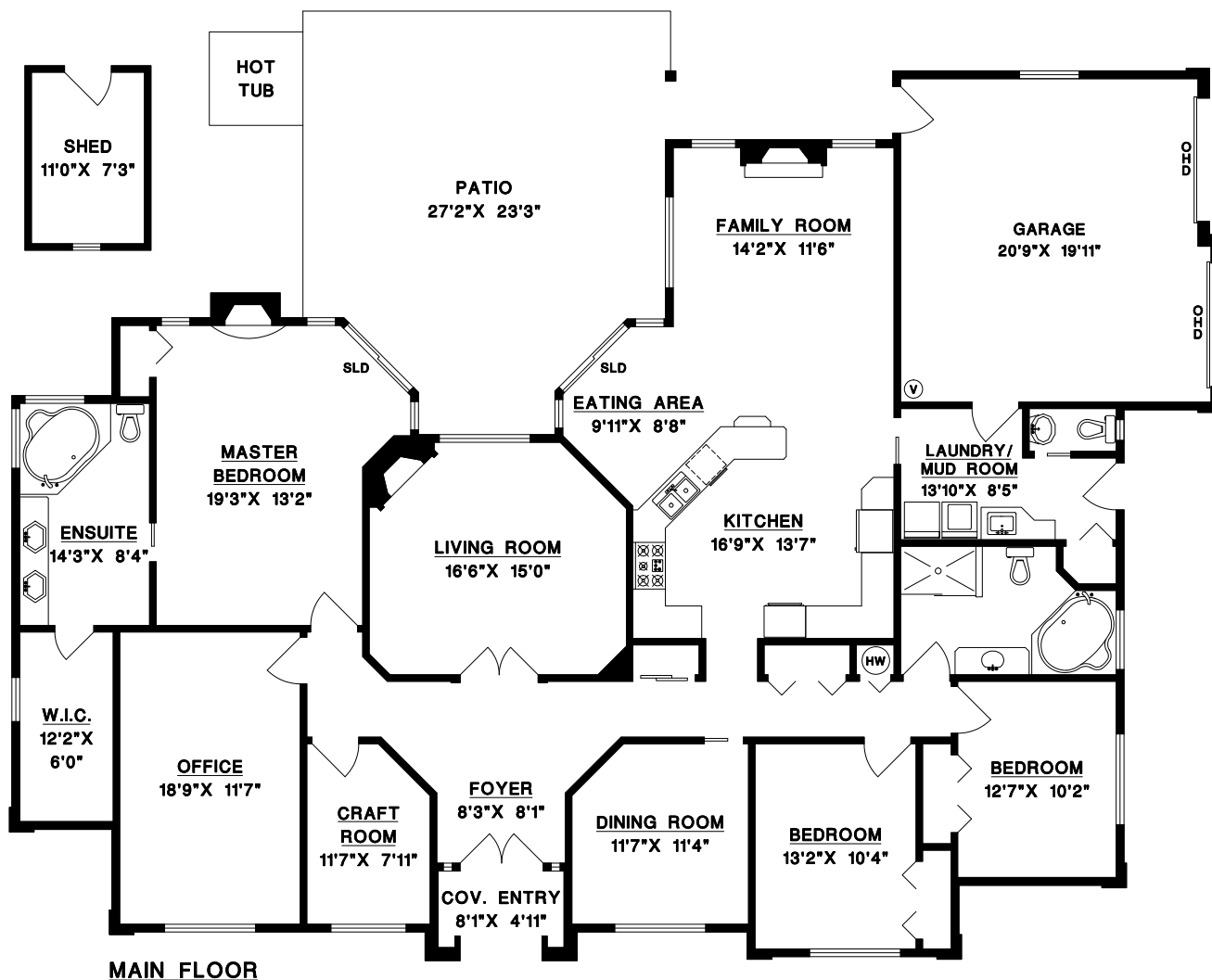
Maureen Fritz

RE/MAX Colonial Pacific Realty

PHONE (604) 541-4888

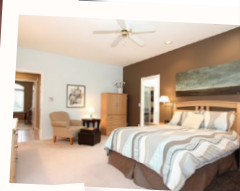
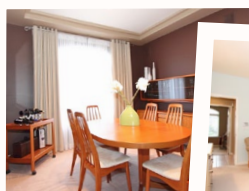
EMAIL maureenfritz@remax.net

WEB www.maureenfritz.ca



2512 138th St., South Surrey

MAIN LEVEL	2702 sq ft
FINISHED AREA	2702 sq ft
Garage	436 sq ft
Entry	50 sq ft
Shed	96 sq ft
DECK/PATIO AREAS	549 sq ft



More pictures
& video online

www.maureenfritz.ca



Maureen Fritz

RE/MAX Colonial Pacific Realty
 PHONE (604) 541-4888
 EMAIL maureenfritz@remax.net
 WEB www.maureenfritz.ca