

Ultra-Private Backyard

# Morgan Creek

\$1,628,800

3368 CANTERBURY DRIVE

**Executive 5022 sf luxury home backing on protected green belt.** Large private south facing 13,166 sf lot. This home has been completely renovated and beautifully maintained with brand new hardwood flooring and carpeting.

Large gourmet kitchen with professional stainless steel appliances, gas range and quartz countertops open to landscaped private backyard overlooking private natural oasis. Entertainment sized rooms with open plan layout and spacious master suite on the main.

Upstairs features two large bedrooms and bonus storage. Lower level has media room, office, gym, wine storage, and two additional large bedrooms.

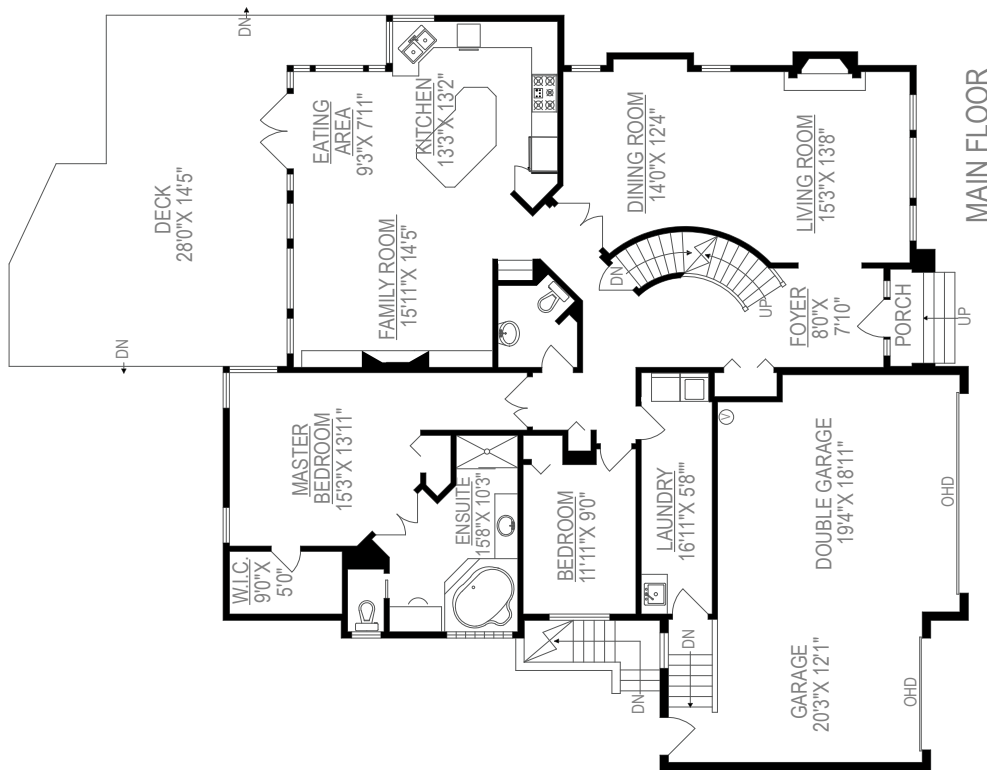
Huge triple garage for your extra vehicle or golf cart. Close to Morgan Creek golf club, Southridge private school, Morgan Elementary and shopping/restaurants.

**Seller willing to negotiate 2 year leaseback.**



Maureen Fritz

**RE/MAX Colonial Pacific Realty**  
PHONE (604) 541-4888  
EMAIL [maureenfritz@remax.net](mailto:maureenfritz@remax.net)  
WEBSITE [www.maureenfritz.ca](http://www.maureenfritz.ca)



* UPPER FLOOR	859 SQ.FT.
MAIN FLOOR	2090 SQ.FT.
LOWER FLOOR	1993 SQ.FT.
FINISHED AREA	4942 SQ.FT.
UNFINISHED	80 SQ.FT.
TOTAL AREA	5022 SQ.FT.
GARAGE	644 SQ.FT.
DECK	546 SQ.FT.

\* Includes limited ceiling height in storage area.



*Maureen Fritz*

**RE/MAX Colonial Pacific Realty**

PHONE (604) 541-4888

EMAIL [maureenfritz@remax.net](mailto:maureenfritz@remax.net)

WEBSITE [www.maureenfritz.ca](http://www.maureenfritz.ca)