

Mark Wiens
Phone:
Mobile: (778) 840-7653
Fax:
Email: mark@markwiens.ca

716 4818 ELDORADO MEWS, Vancouver East, BC, V5R 0B3, Canada

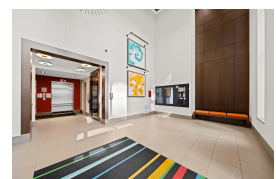
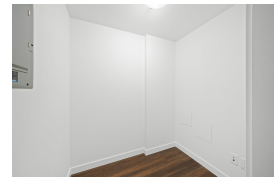
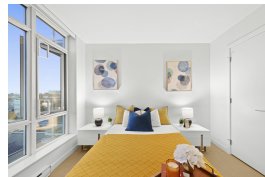
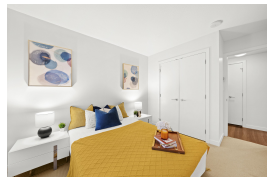
MLS®# R2935092



Property Value	\$560,000
Type	Apartment/Condo
Style	Corner Unit, Upper Unit
Year Built	2013
Taxes	1659.22
Living Area	560 sq.ft.
Lot Size Area	560 sq.ft.
Bedroom	1
Bathroom	1 full

Description

Bright & spacious CORNER 1 Bed + Den w/ south facing views on quiet side of this SOLID CONCRETE building. FRESHLY PAINTED, this meticulously designed OPEN PLAN layout maximises space & functionality with an EXTREMELY EFFICIENT floorplan. High-end finishes include BEAUTIFUL quartz countertops & stainless steel appliances w/ BRAND NEW fridge. Abundant natural light fills the unit through floor-to-ceiling windows and offer great treeline views to the south. Located at the vibrant intersection of Kingsway & Nanaimo, directly on top of Shoppers for maximum convenience and just minutes from the Nanaimo Skytrain Station. Top-tier building amenities include a TWO LEVEL fully equipped fitness centre, party room and garden terrace. 1 EXTRA LARGE parking right next to the elevator + 1 storage.



716-4818 Eldorado Mews
Vancouver, BC V5R 0B3
1 Bed + 1 Bath + Den
GROSS EXTERIOR AREA
560 sq. ft. (560 sq. ft.)
TOTAL 560 sq. ft.
BEDROOM 11' x 11' 6"
BATHROOM 5' x 6' 6"
DEN 11' x 11' 6"