

34 SHEPHERD DRIVE, Barrie (400 East), Ontario, L9J0P3, Canada

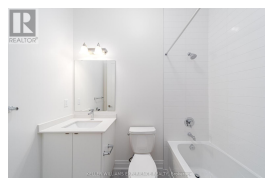
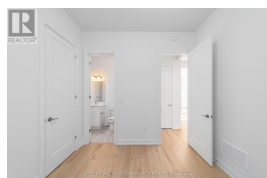
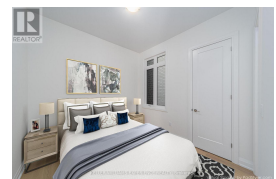
MLS®# S11918099



Property Value	\$1,349,000
Type	House
Basement	N/A (Unfinished)
Parking	Attached Garage
Living Area	2,999.98 sq.ft.
Lot Frontage	38 ft
Lot Size Area	38.1 x 91.9 FT
Bedrooms	6
Bathrooms	4 full & 1 half

Description

This New Great Gulf Build Offers A Luxurious Lifestyle With a \$150K builder lot premium backing onto serene open green space, plus over \$125k in Upgrades Across Its 3,155 Sq. Ft. Of Living Space. Featuring A Walk-Out Basement, 5 Bedrooms, And 4.1 Baths, With The Flexibility To Convert The 2nd floor Den Into A 6th Bedroom, This Home Adapts Effortlessly To Your Evolving Needs. Boasting endless Interior And Exterior Enhancements. Soaring 10-Foot Ceilings On The Main Floor And 9-Foot Ceilings On The Second Floor. The Main Floor Bedroom With An Attached Bath Is Perfect For In-Laws, While The Separate Side Entrance And Walk-Out Basement Provide Endless Possibilities. All New Stainless Steel Kitchen Appliances Including Gas Stove. The Homes Open Layout Seamlessly Merges The Living, Dining, And Kitchen Spaces, Complemented By Thoughtful Upgrades Including A Gas Fireplace, Smooth Ceilings, Kitchen Pots And Pans Drawers, A Garbage Bin Pullout Drawer, 8-Foot Tall Exterior Front Door, upgraded hardwood floor throughout, quartz countertops in all bathrooms. Set In A Serene Location Backing Onto A Open Green Space, Yet Conveniently Close To The GO Station And Amenities, This Property Also Features A Double-Car Garage For Secure Parking. Dont Miss The Opportunity To Own This Stunning Home With Modern Upgrades And A Functional Design Tailored For Todays Lifestyle. **** EXTRAS **** The Second-Floor Laundry Room Enhances Practicality. Offers Access To Parks, Quality Schools, Shopping, And Amenities. (id:2469)





BA3B8
Elevation C
2160 sf



BA3B8
Elevation C
2160 sf



BA3B8
Elevation C
2160 sf

