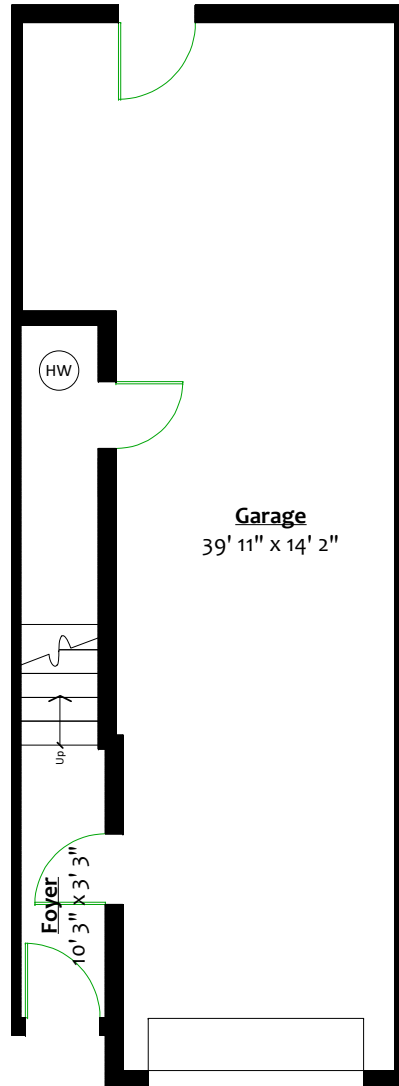


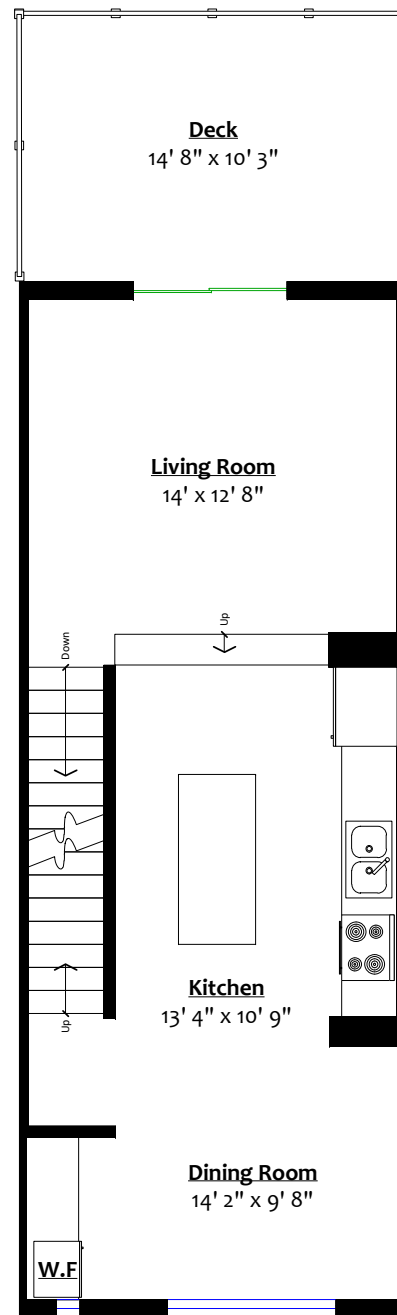
#3 – 253 171 Street, Surrey, B.C.

Totals**

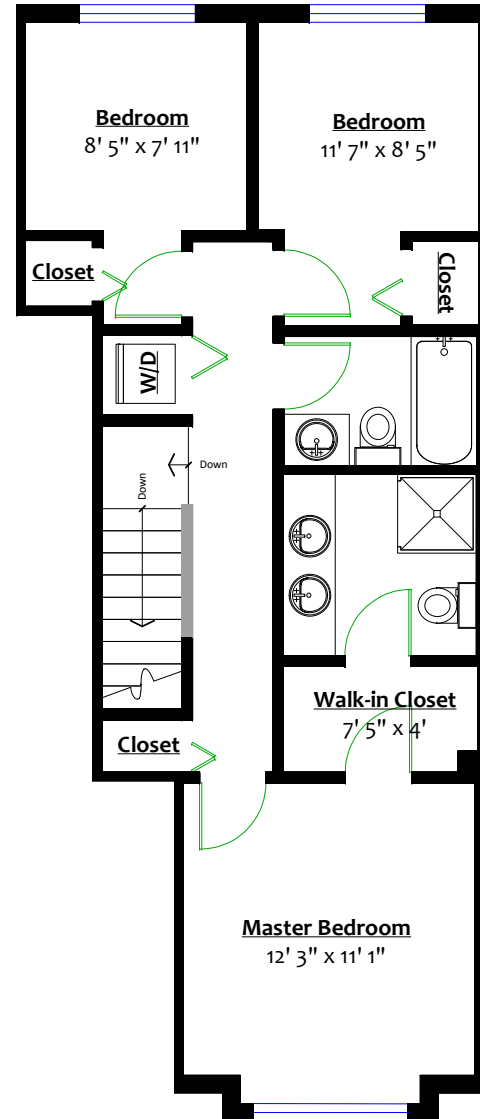
Main Level:	579 sq. ft.	Garage:	495 sq. ft.
Upper Level:	624 sq. ft.	Mechanical:	47 sq. ft.
Lower Level:	65 sq. ft.	Deck:	150 sq. ft.
Total:	1,268 sq. ft.	Total:	692 sq. ft.



LOWER LEVEL
Floor Area: 65 Sq. Ft.



MAIN LEVEL
Floor Area: 579 Sq. Ft.



UPPER LEVEL
Floor Area: 624 Sq. Ft.



KARLEY RICE
PERSONAL REAL ESTATE CORPORATION

