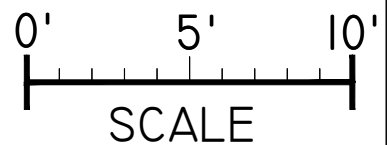
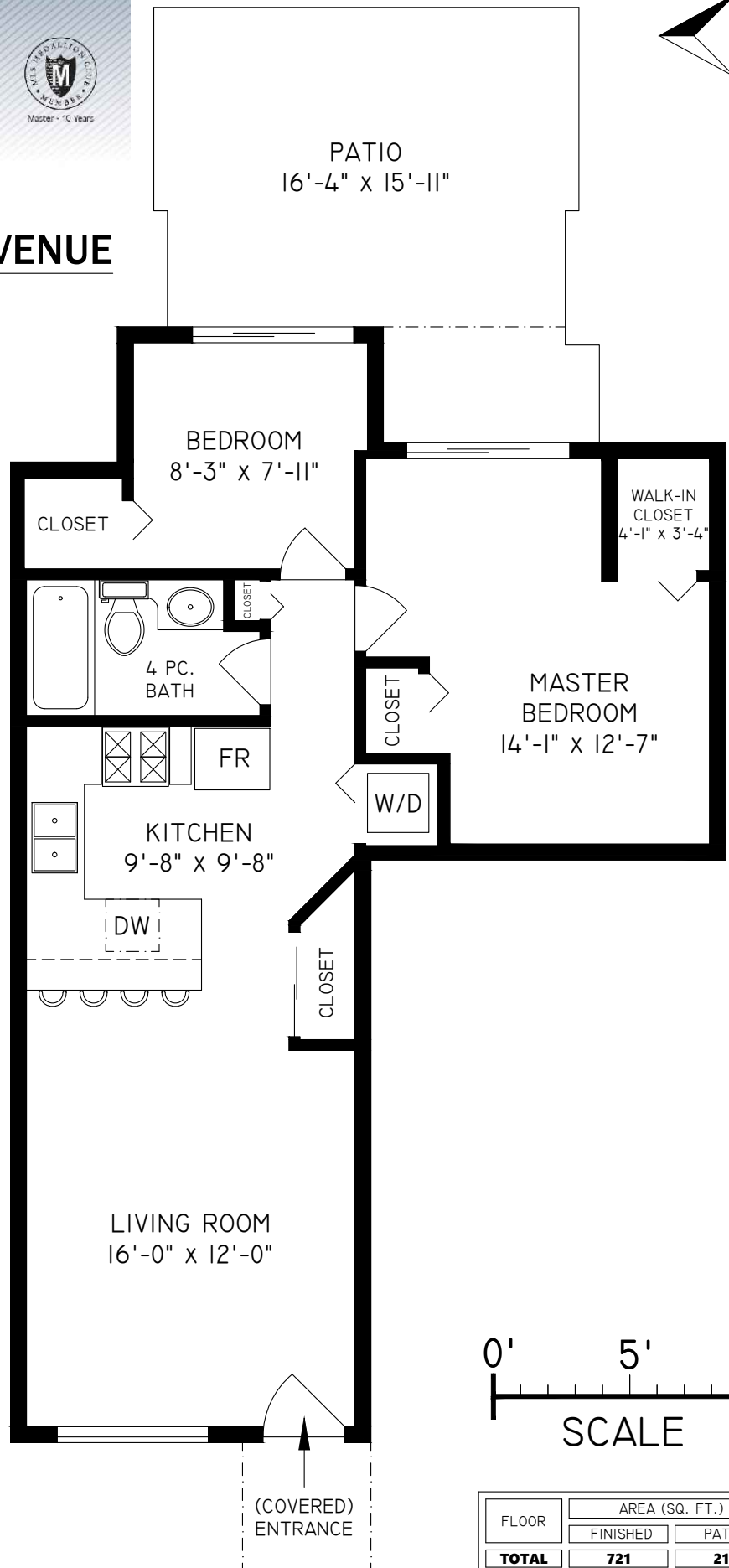




KARLEY RICE
PERSONAL REAL ESTATE CORPORATION



1835 STAINSBURY AVENUE
VANCOUVER
721 SQ. FT.
9'-0" CEILING HEIGHT



THE REPRESENTED FLOOR PLANS ARE NOT SUITABLE FOR CONSTRUCTION/ARCHITECTURAL PURPOSES. EVERY EFFORT HAS BEEN MADE TO REPRESENT ALL DIMENSION ACCURATELY. E&O INSURED. FINAL SQUARE FOOTAGE MAY BE OBTAINED FROM STRATA PLAN.

FLOOR	AREA (SQ. FT.)	
	FINISHED	PATIO
TOTAL	721	211