



KARLEY RICE
PERSONAL REAL ESTATE CORPORATION



Master - 10 Years

604-448-2263

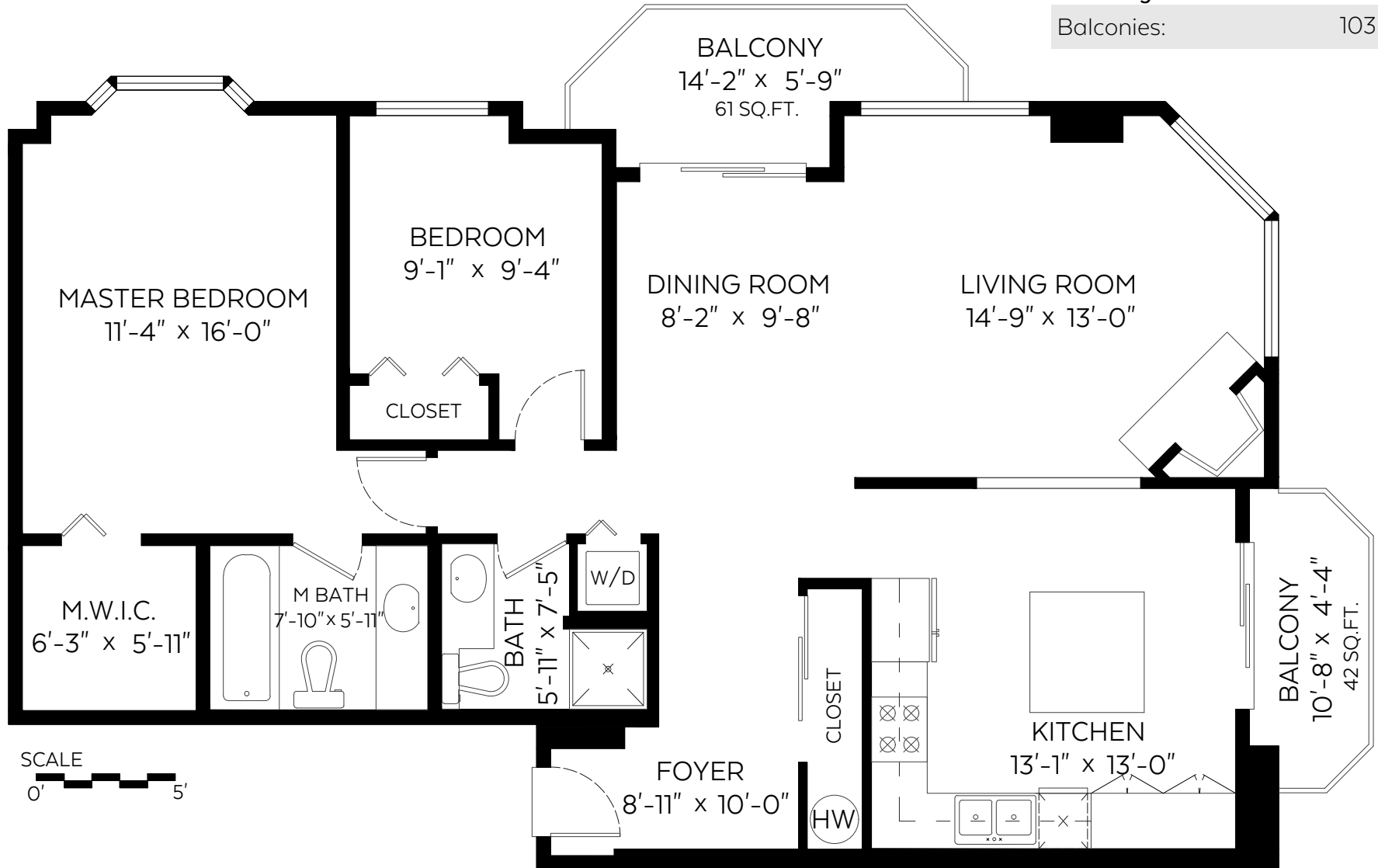
karleyrice@shaw.ca | karleyrice.com

#204-412 Twelfth Street,
New Westminster, B.C.

Main Floor: 1,129 sq.ft.

Auxiliary Area

Balconies: 103 sq.ft.



Measured on: Feb. 8, 2018



The floor plan is not suitable for architectural/construction and is covered under E&O. © Excelsior Measuring Inc. 2018. All rights reserved for Excelsior Measuring Inc. Users shall not publish and distribute such material (in whole or in part) and/or incorporate it in other works in any form.



NORTH

