



KARLEY RICE
PERSONAL REAL ESTATE CORPORATION

604-448-2263

karleyrice@shaw.ca | karleyrice.com

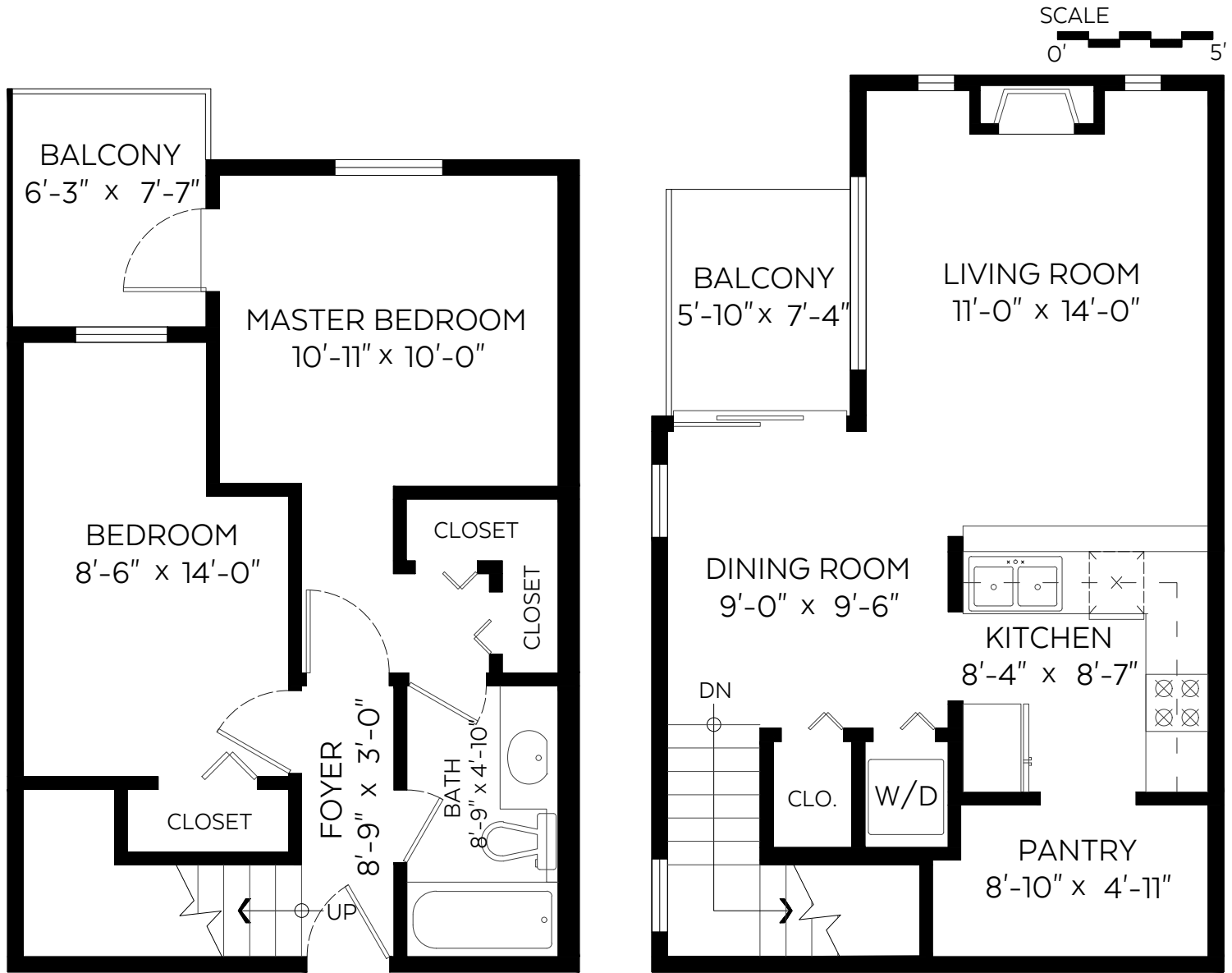


#313-3150 W 4th Avenue,
Vancouver, B.C.

Main Floor:	461 sq.ft.
Lower Floor:	446 sq.ft.
Total:	907 sq.ft.

Auxiliary Area

Balconies:	91 sq.ft.
------------	-----------



Lower Floor Plan

Floor Area: 446 sq.ft

Main Floor Plan

Floor Area: 461 sq.ft



Measured on: May 25, 2017

The floor plan is not suitable for architectural/construction and is covered under E&O. © Excelsior Measuring Inc. 2017. All rights reserved for Excelsior Measuring Inc. Users shall not publish and distribute such material (in whole or in part) and/or incorporate it in other works in any form.

