



www.karleyrice.com

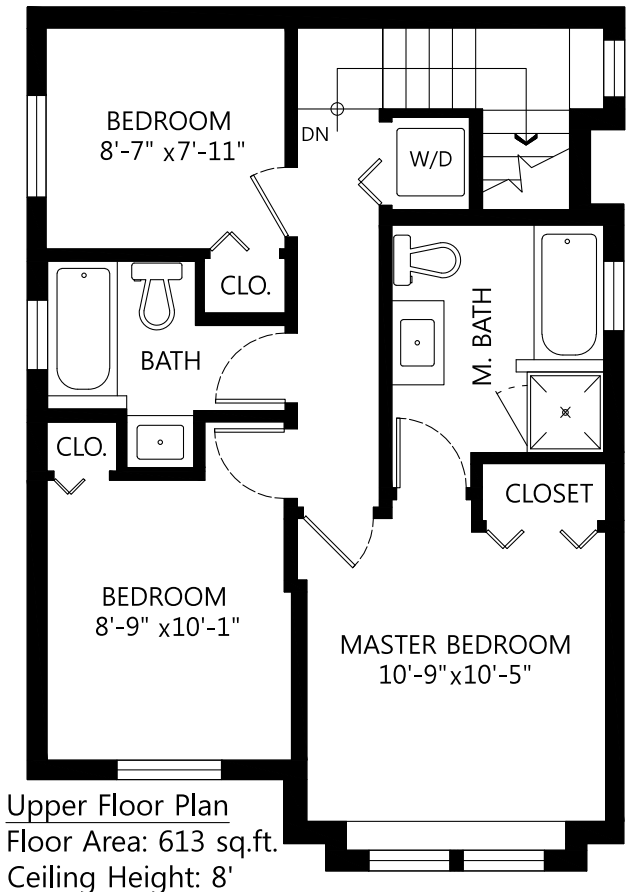
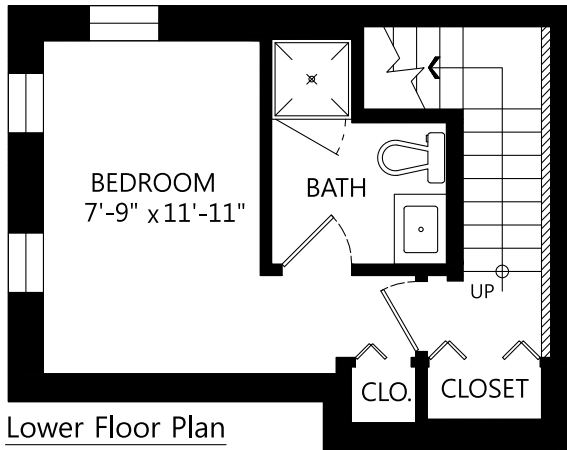
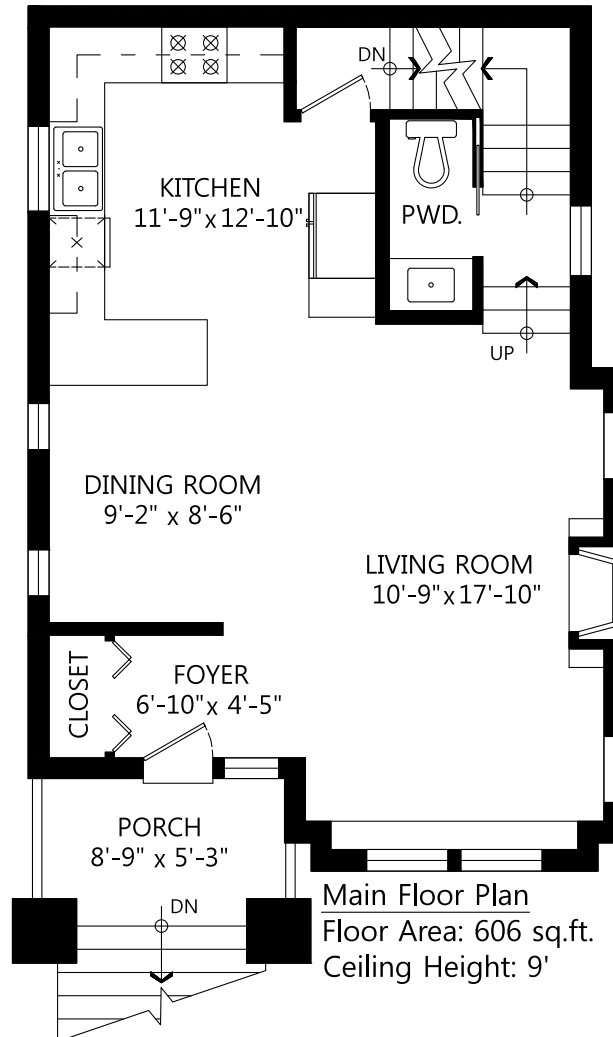
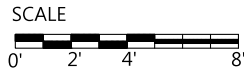
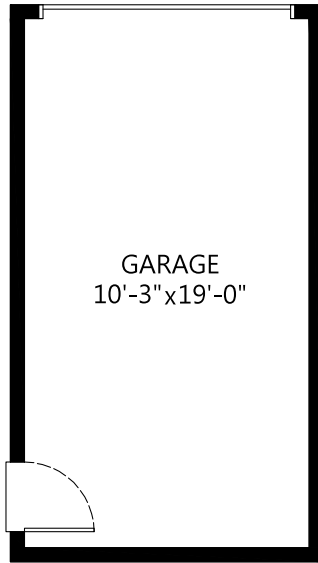
KARLEY | RICE



604-448-2263 karleyrice@shaw.ca

1833 Napier Street, Vancouver, B.C.

Main Floor:	606 sq.ft.
Upper Floor:	613 sq.ft.
Lower Floor:	303 sq.ft.
Total:	1,522 sq.ft.
Garage:	224 sq.ft.
Porch:	49 sq.ft.



The floor plan is not suitable for architectural/construction, square footage-method ANSI Z765 used & is covered under E&O



NORTH

