

419 8 St NE 07.30.2020

Main - 966.53 sq.ft/ 89.79 m2

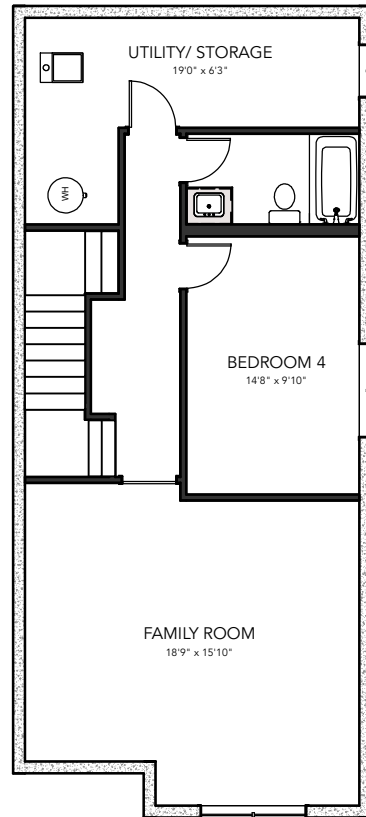
Upper - 1,062.45 sq.ft/ 98.70 m2

RMS Area - 2,028.98 sq.ft/ 188.49 m2

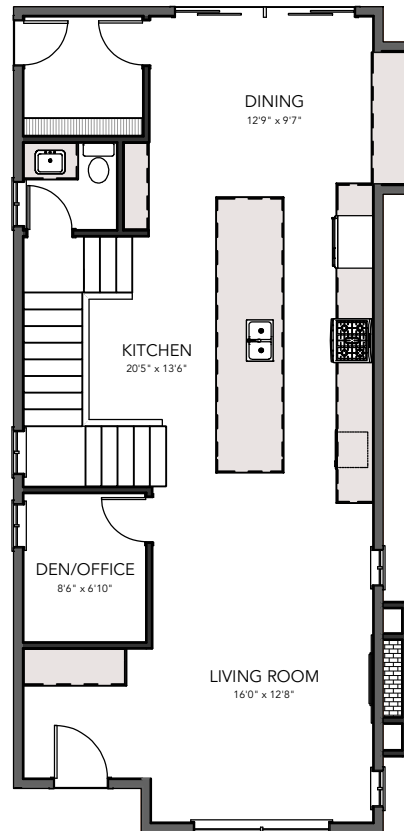
Basement - 831.71 sq.ft/ 77.27 m2

Total - 2,860.69 sq.ft/ 265.76 m2

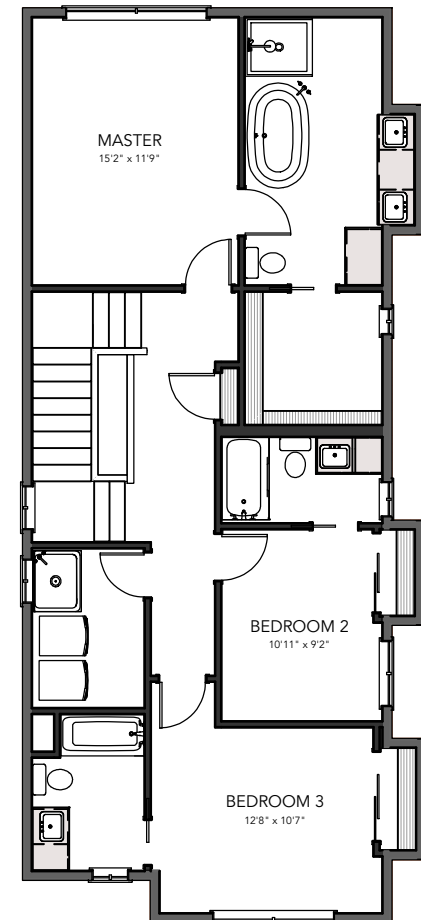
Julie Dempsey - Real Estate Associate  
Sothebys International Realty - Canada  
(403) 923-6299  
jdempsey@sothebysrealty.ca



**BASEMENT**



**MAIN**



**UPPER**

PHOTOGRAPHY | HD VIDEO TOURS | MEASURING & FLOOR PLANS | VIRTUAL STAGING

Measurements are insured and are based on local guidelines.

This floor plan is an illustration based on the measurements taken and existing structures of the property.

It is intended to be used only by the purchaser of the transaction.