

TERRI AND DON WEBER

Prudential Sussex Realty - Terri & Don Weber

2397 Marine Drive
 West Vancouver, BC V7V 1K9
 T: 604-802-5460
 E: terri@terriweber.com
 www.terriweber.com

Call Terri today.



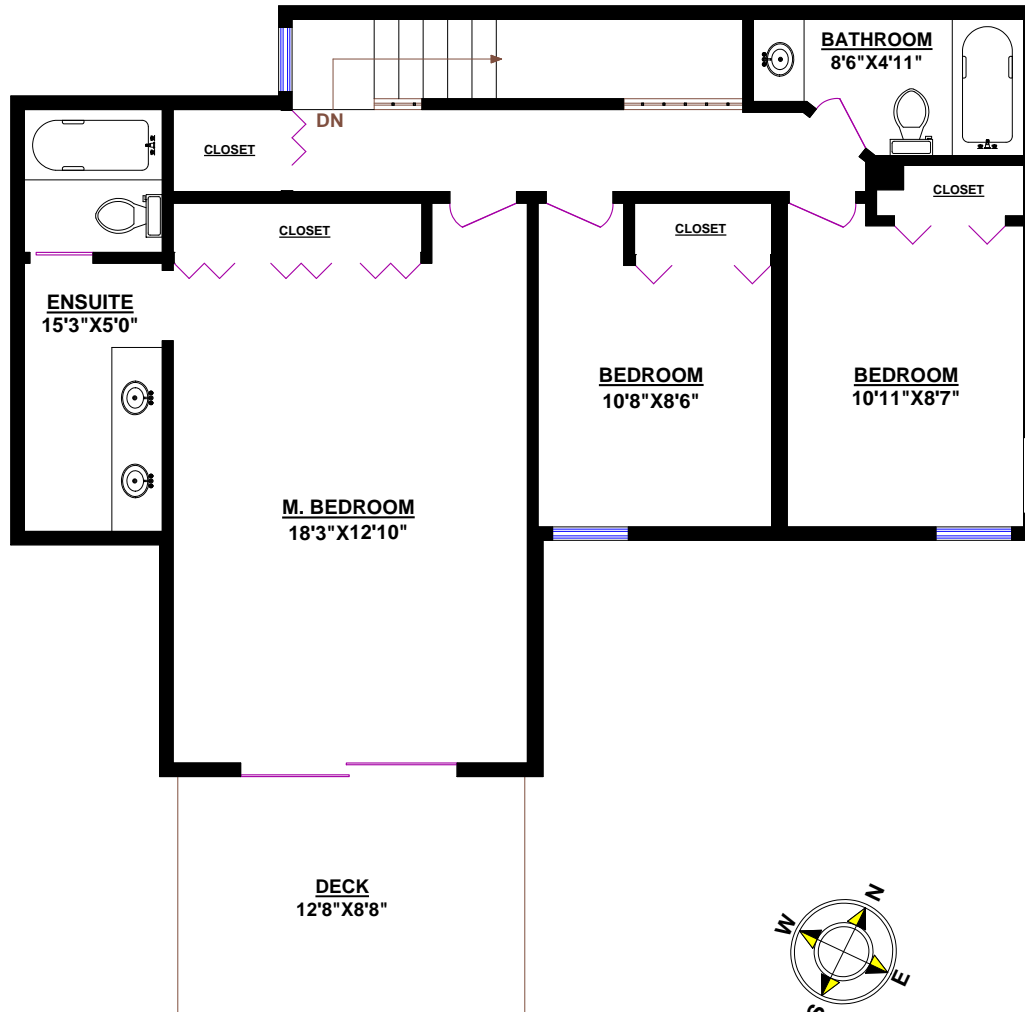
3214 HUNTLEIGH CRESCENT, NORTH VANCOUVER

TOTALS

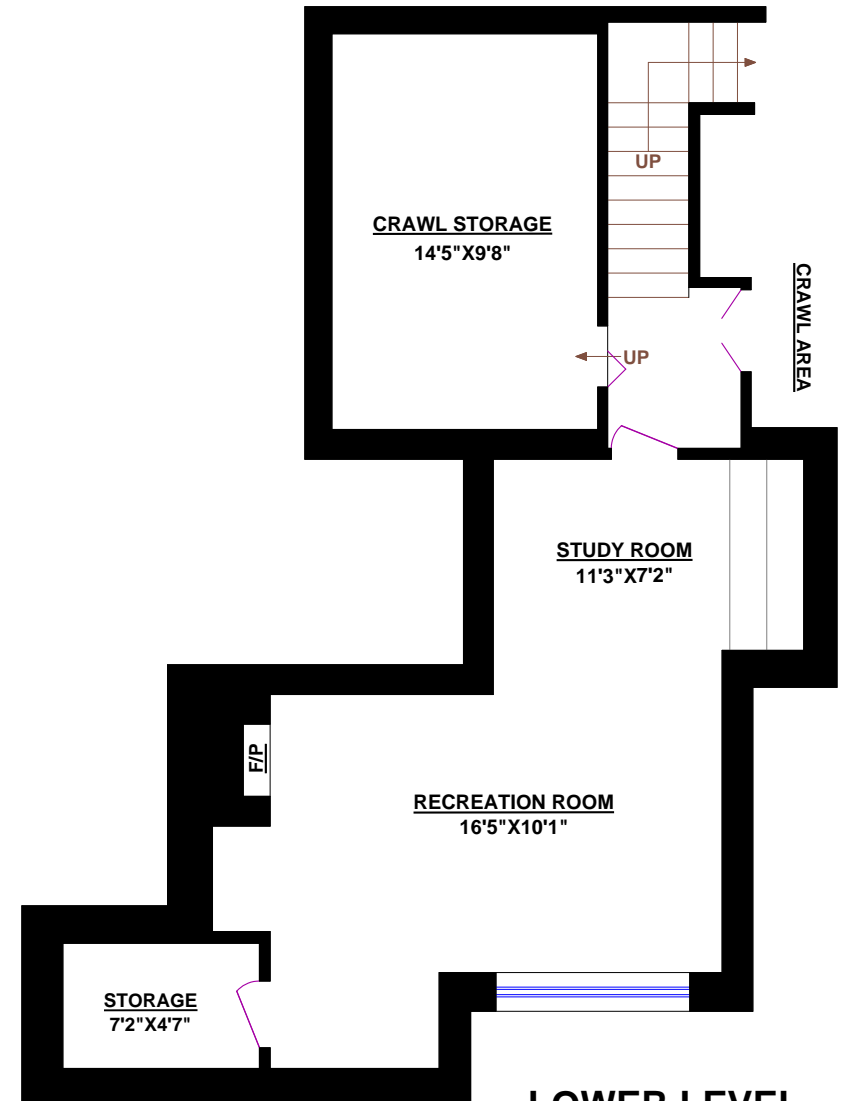
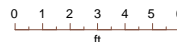
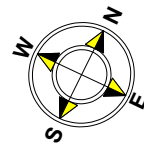
Main Floor (finished): 1,366 sq.ft.
 Upper Level (finished): 817 sq.ft.
 Lower Level (finished): 531 sq.ft.
TOTAL FINISHED: 2,714 sq.ft.
 TOTAL UNFINISHED: 0 sq.ft.
GRAND TOTAL: 2,714 sq.ft.

OTHER AREAS:

Garage: 378 sq.ft.
 Storage: 41 sq.ft.
 Crawl Storage: 167 sq.ft.
 Deck (Main): 404 sq.ft.
 Deck (Upper): 109 sq.ft.
 Deck (Main): 46 sq.ft.



UPPER LEVEL



LOWER LEVEL