



JOHN MCKENZIE

RE/MAX Cres Realty

Cell: 604-715-3231

Office: 604-988-8000

john@jrmckenzie.com

www.jrmckenzie.com

TOTAL FINISHED AREA: 1924 SQ.FT.

OTHER AREA(S)

UNFINISHED AREA(S): 664 SQ.FT.

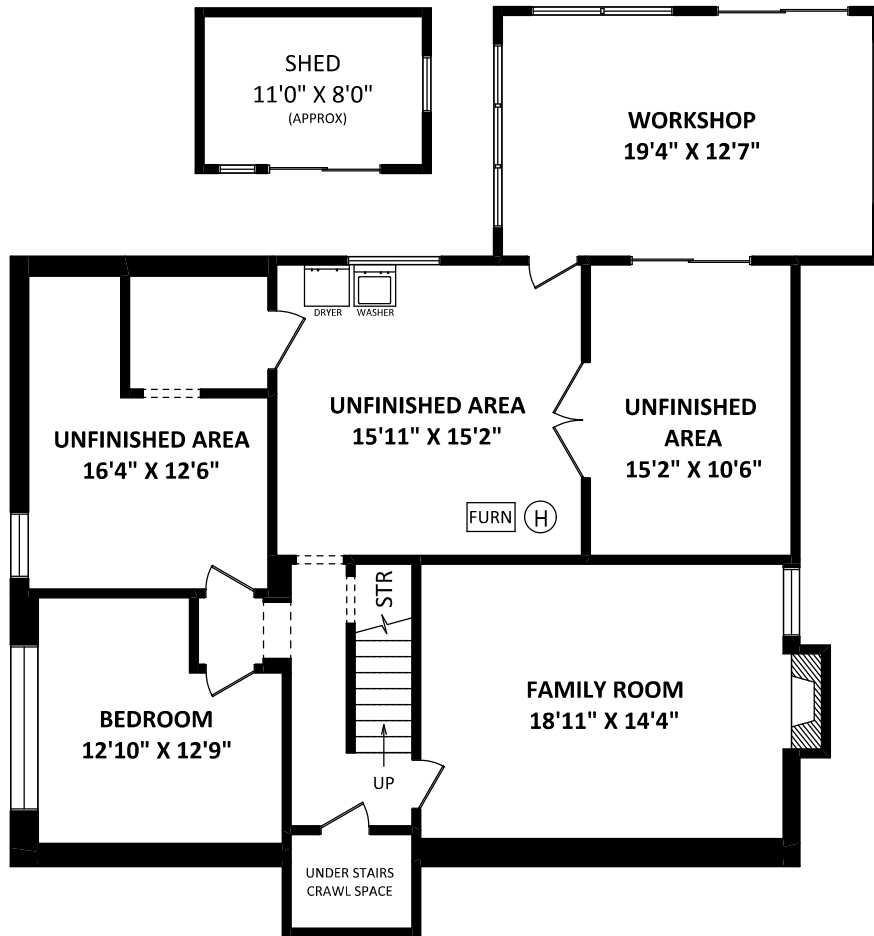
WORKSHOP: 264 SQ.FT.

CARPORT: 236 SQ.FT.

DECK: 320 SQ.FT.*

SHED: 105 SQ.FT.*

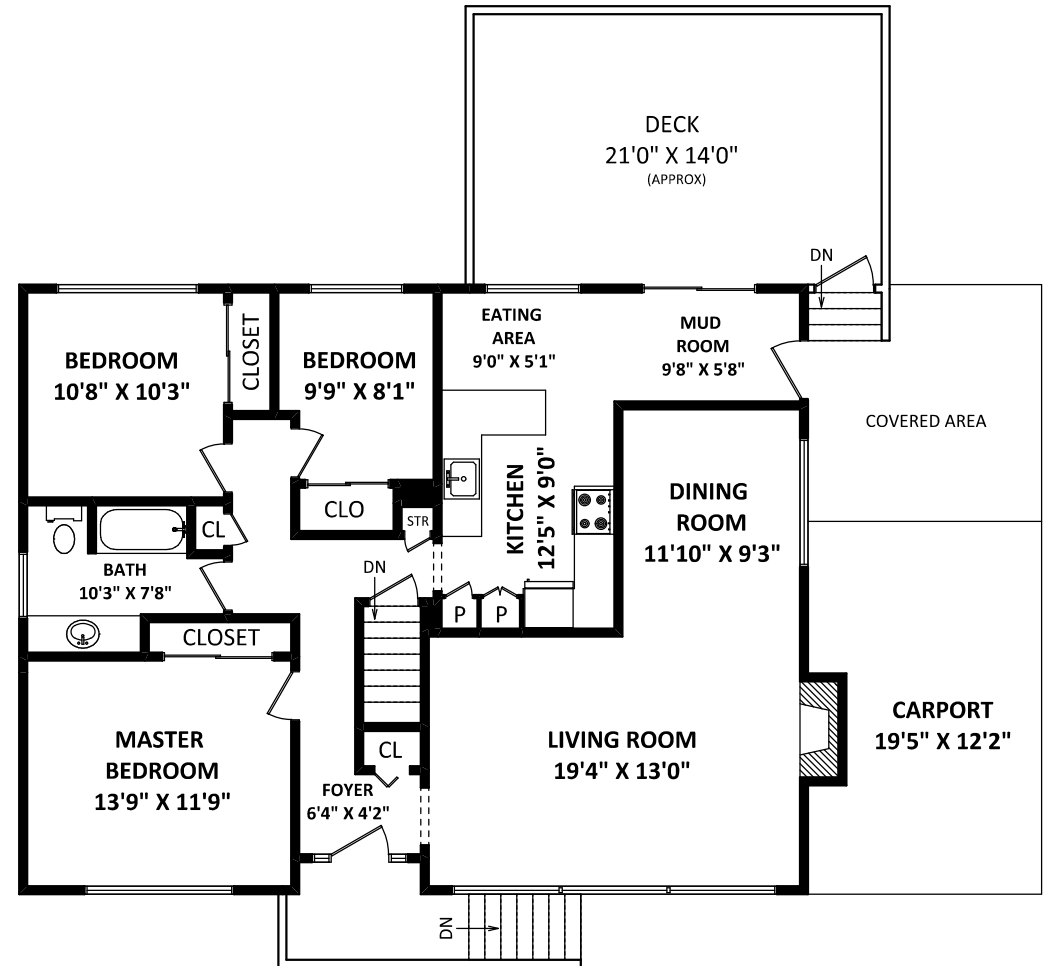
1378 E 24th Street,
North Vancouver, BC



LOWER FLOOR:

FINISHED AREA: 630 SQ.FT.

UNFINISHED AREA(S): 664 SQ.FT.



MAIN FLOOR: 1294 SQ.FT.



DISCLAIMER:
1. MEASUREMENTS ARE FOR PROMOTIONAL USE ONLY & ARE NOT INTENDED FOR CONSTRUCTION USE. ROOM DIMENSIONS ARE APPROXIMATE. MEASUREMENTS & CALCULATIONS FOR FINISHED AREAS ARE E&O INSURED.
2. FINISHED AREAS ARE ENCLOSED AREAS IN A HOUSE THAT ARE SUITABLE FOR YEAR-ROUND USE, EMBODYING WALLS, FLOORS, AND CEILINGS THAT ARE SIMILAR TO THE REST OF THE HOUSE. (ANSI Z765-2013)
3. THIS FLOOR PLAN MAY ONLY BE REPRODUCED WITH PERMISSION OF THE REALTOR(S) ON THIS FLOOR PLAN.
* ANY MEASUREMENT WITH AN ASTERISK (*) OR (APPROX) ARE APPROXIMATE AND FOR ILLUSTRATION PURPOSES ONLY AND ARE NOT E&O INSURED.

SCALE: 0 2 5 10 FT

FLOOR PLAN BY: [FEBRUARY 22, 2019]

TEL: 604-575-1244
www.seevirtual360.com