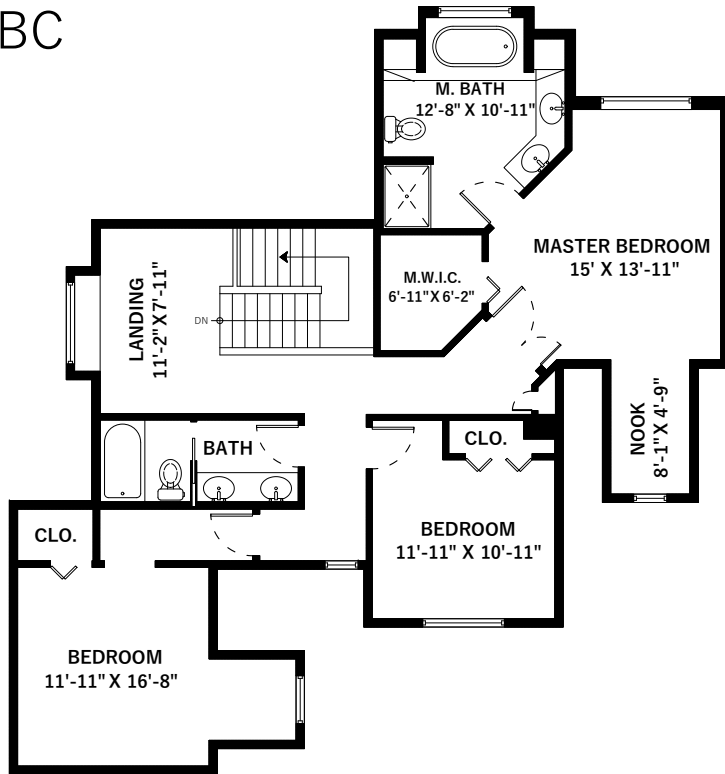


2929 147A Street

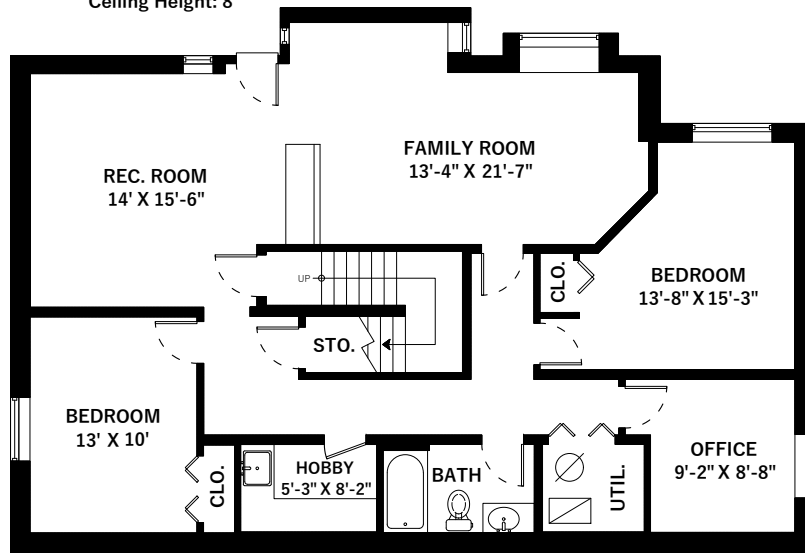
Surrey, BC

Main Floor	1454 SQ.FT.
Upper Floor	1190 SQ.FT.
Lower Floor	1441 SQ.FT.
Total	4085 SQ.FT.

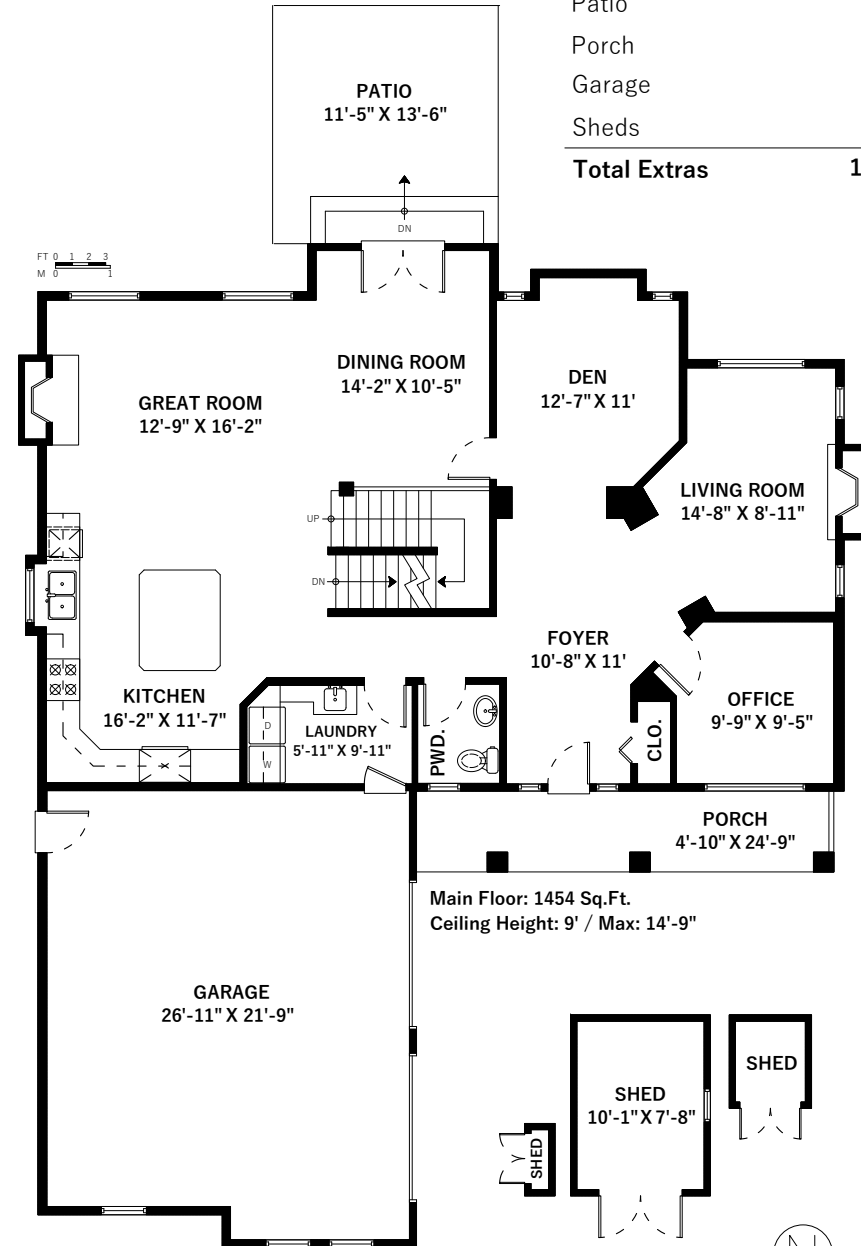
Patio	161 SQ.FT.
Porch	121 SQ.FT.
Garage	600 SQ.FT.
Sheds	126 SQ.FT.
Total Extras	1008 SQ.FT.



Upper Floor: 1190 Sq.Ft.
Ceiling Height: 8'



Lower Floor: 1441 Sq.Ft.
Ceiling Height: 7'-8"



Main Floor: 1454 Sq.Ft.
Ceiling Height: 9' / Max: 14'-9"

