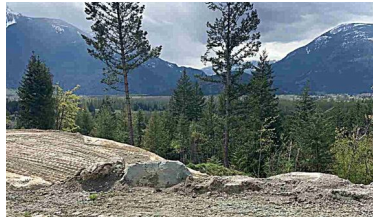
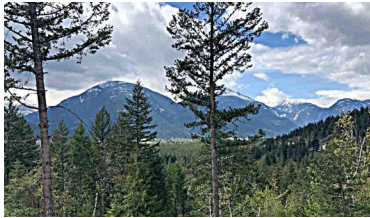
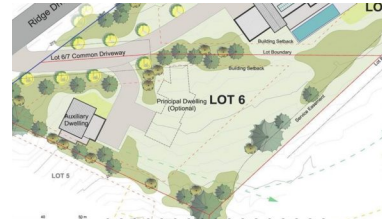
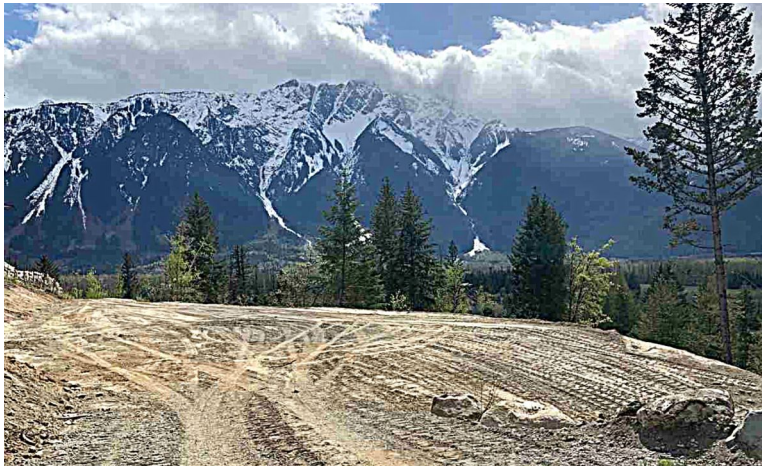


View Lot In The Ridge **FOR SALE**

7508 Pebble Creek Drive, Pemberton, BC



OPPORTUNITY TO BUILD IN PEMBERTON'S NEWEST HILLSIDE NEIGHBOURHOOD

- Join the other gorgeous new homes being built now on this fully serviced South facing property with Mt Currie and valley views
- Estate size .652 acre parcel
- Building site has been prepared including driveway
- Hike, bike, golf, and watch the kids' soccer out your front door
- Shopping and schools a 5 minute drive away
- Whistler is just a 30 minute drive away

LISTED AT \$449,000

☎ (604) 230-8167 ✉ Frank@Frankingham.com

F R A N K I N G H A M . C O M

Connecting Vancouver, Sea to Sky, and Pemberton Buyers and Sellers.

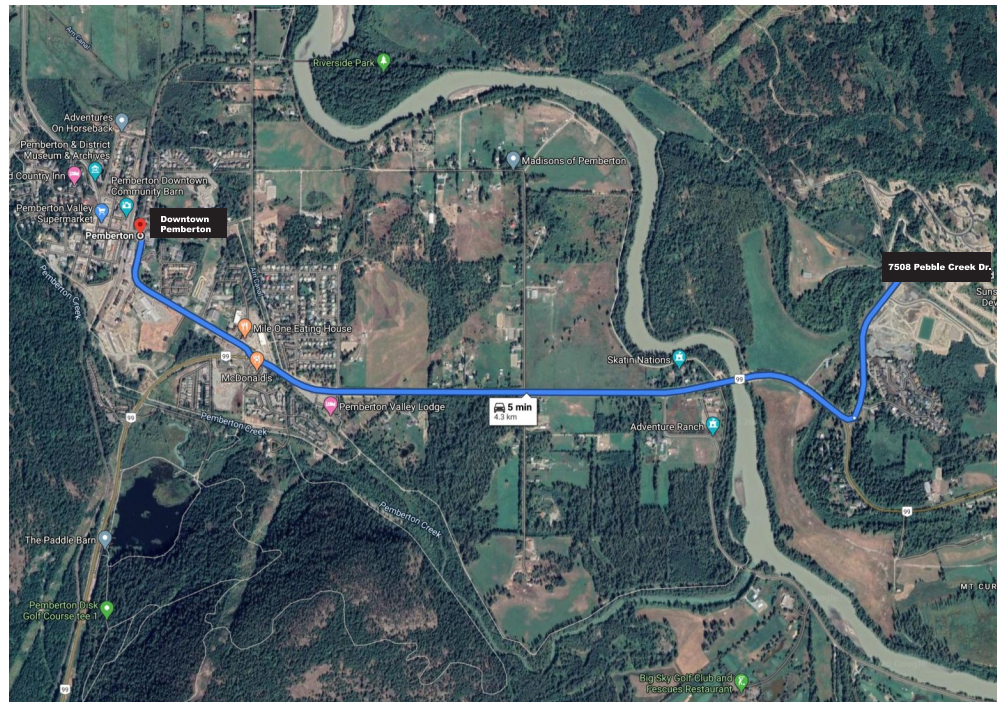


**FRANK
INGHAM**
REAL ESTATE



LOCATION

7508 Pebble Creek Drive, Pemberton, BC



5 MINUTES FROM TOWN, 30 MINUTES
TO WHISTLER, 2.25 HOURS TO VANCOUVER

Pemberton is a beautiful 25 minute drive north of Whistler, ranked one of the world's top four season destination resorts. Located at the foot of majestic Mt. Currie, the Pemberton Valley is the gateway to everything outdoors. A rural family community, The Plateau is centrally located for easy access to town, lakes, golf, and back country adventure. An easy drive gets you to schools, shopping, restaurants, and all community amenities and services in about 6 minutes.

☎ (604) 230-8167 ✉ frank@frankingham.com

FRANKINGHAM.COM

Connecting Vancouver, Sea to Sky, and Pemberton Buyers and Sellers.



**FRANK
INGHAM**
REAL ESTATE

