

FEATURE

Lot 1 Pemberton Farm Road, Pemberton, BC



17.6-ACRE ALR PROPERTY | PEMBERTON

This 17.6-acre level Agricultural Land Reserve property offers approximately 12 acres of productive hay field, yielding over 100 round bales annually, all located less than 10 minutes from downtown Pemberton. It represents a rare opportunity to secure high-quality farmland with strong agricultural output while maintaining exceptional privacy and long-term value. The expansive acreage supports the development of a private residence alongside continued farm use, positioned at the gateway to the MacKenzie Basin. With immediate access to extensive biking and riding trails and close proximity to all Pemberton amenities, the property delivers a unique balance of rural seclusion and everyday convenience.

☎ (604) 230-8167 ✉ Frank@FRANKINGHAM.COM

CONNECTING VANCOUVER, SEA TO SKY, AND PEMBERTON BUYERS AND SELLERS.



MARKETED BY
**FRANK
INGHAM**
REAL ESTATE



ROYAL LEPAGE **Sussex** *AWARD OF Excellence*
PRESIDENT'S GOLD
AWARD 2025

DETAILS

Lot 1 Pemberton Farm Road, Pemberton, BC

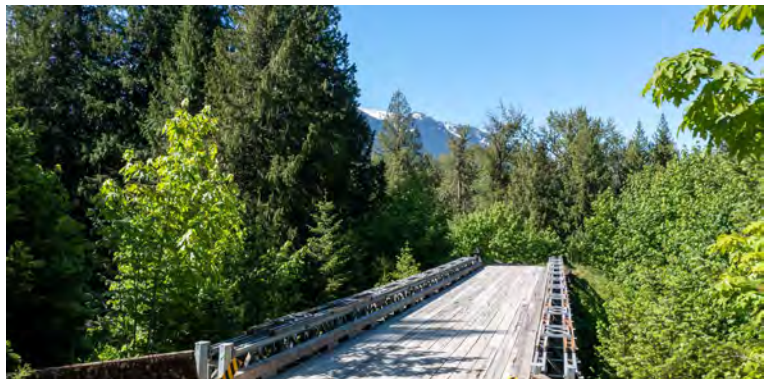
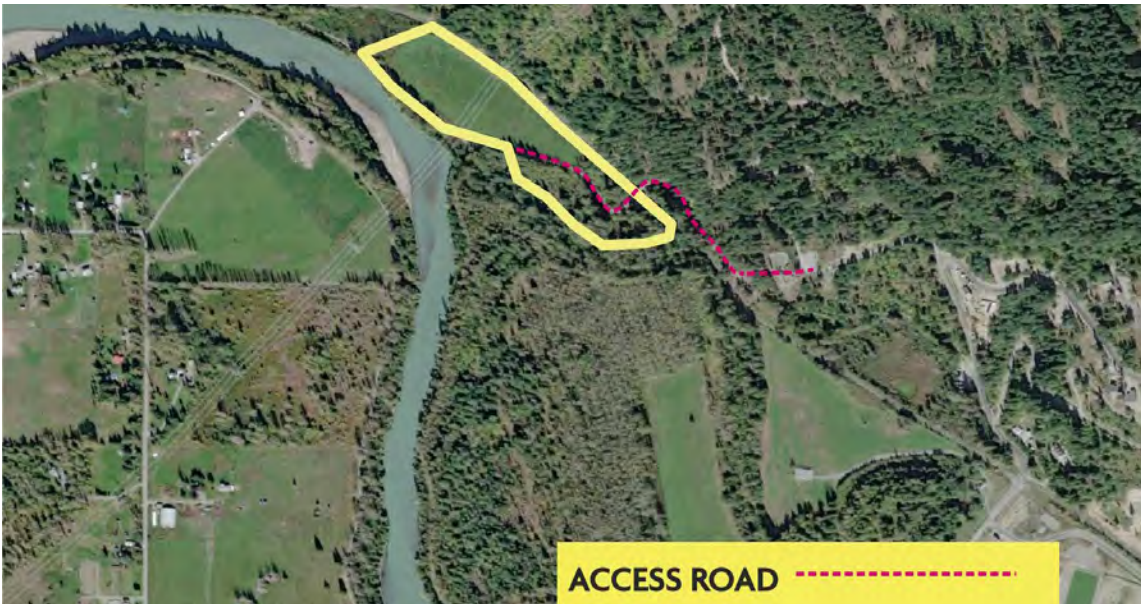


UNIQUE FEATURES

- Endless year round sun
- Excellent Mt Currie views
- 12 acre hay field producing over 100 bales yearly
- Several private locations for building and barn sites
- Situated near Pemberton Plateau and close to town
- Direct access to the best bike trails in the valley
- An easy bike or horseback ride to town
- Close to the new playing fields at Den Duyf Park
- Direct access to the MacKenzie \Basin Wilderness

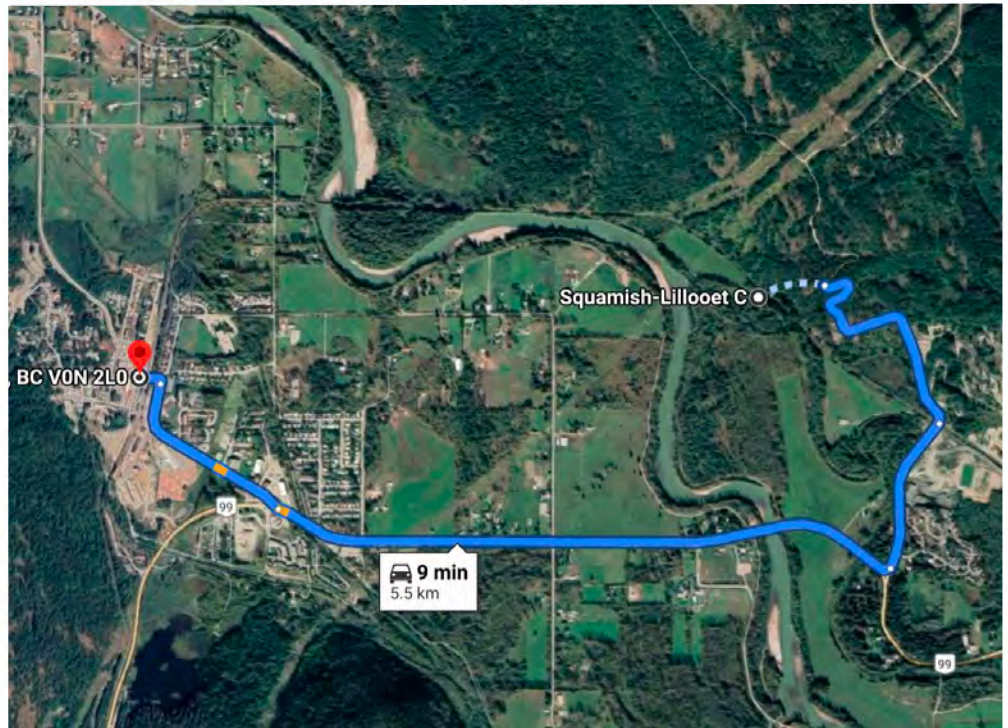
Live, Build, and Thrive on Your Own Land – Central, Yet Secluded

Picture endless sunshine year-round on the serene banks of the Lillooet River, with expansive views of Mount Currie just waiting to be enjoyed. This 12-acre property boasts a lush hay field producing over 100 bales annually, along with several private building and barn sites, offering plenty of space to create your perfect retreat. Ideally located near the Pemberton Plateau, with direct access to the valley's best bike trails and the pristine MacKenzie Basin Wilderness, it's an outdoor enthusiast's paradise. Close to town and the new Den Duyf Park playing fields, this off-grid property has the potential for services.



LOCATION

Lot 1 Pemberton Farm Road, Pemberton, BC



9 minutes to Town. 30 minutes to Whistler. 2.5 hours to Vancouver.

In recent years, Pemberton's agriculture, tourism, and business sectors have experienced significant growth, attracting visitors and residents drawn to the outdoors where biking, paragliding, skydiving, backcountry skiing, snowmobiling, fishing, hiking, golf, and equestrian pursuits all take centre stage. Located just 25 minutes from Whistler, the town provides essential services and amenities including schools, shopping, restaurants, medical and dental clinics, and recreational facilities.

☎ (604) 230-8167 ✉ Frank@FRANKINGHAM.COM

CONNECTING VANCOUVER, SEA TO SKY, AND PEMBERTON BUYERS AND SELLERS.



MARKETED BY
**FRANK
INGHAM**
REAL ESTATE

