

MT. CURRIE VIEW VILLAGE

Enjoy Your Life in Naturally
Beautiful Pemberton BC



AFFORDABLE COMMUNITY LIVING STEPS FROM NATURE AND EVERYDAY CONVENIENCES

Welcome to Mt. Currie View Village, a new collection of contemporary modular homes in one of Pemberton's most naturally beautiful and convenient locations. Just steps to One Mile Lake and backing onto the Pemberton Valley Trail network, this community offers direct access to year-round recreation while being only a five-minute walk to both local schools and the new BC Transit exchange. Framed by iconic Mount Currie, the setting feels peaceful yet connected, with Whistler only 20 minutes away. Adjacent to the established Mount Currie View neighbourhood, these homes feature modern finishes, efficient layouts, and the comfort of mini-split heating and cooling.

BRAND NEW CONTEMPORARY MODULAR HOMES IN PEMBERTON BC

To schedule a tour please contact:

Frank Ingham
Cell 604 230 8167
Email frank@frankingham.com

Tom Davis *PREC
Cell 604 787 1456
Email tomdavis@telus.net



MTCURRIEVIEWVILLAGE.COM

MT. CURRIE VIEW VILLAGE

13 Brand New Modular
Homes Ranging From
\$449,900



CONTEMPORARY MODULAR HOMES ROOTED IN NATURE AND COMMUNITY

Mt. Currie View Village offers 13 homesites, each with an efficiently designed 2-bed/2-bath or 3-bed/2-bath modular home. Floorplans are bright and optimized for both storage and everyday functionality. Homes feature modern fiber-cement siding with charcoal metal accents, a durable black metal roof with a 136-PSF snow load, and dual 6' patio doors with transom windows for added natural light. Inside.

Mt. Currie View Village appeals to buyers seeking value, walkability, and outdoor connection. Families appreciate proximity to schools and Whistler, while first-time buyers enjoy bright, efficient layouts suited to remote work. Downsizers value the low-maintenance lifestyle and trail access. The community also suits shared living or four-season recreation use, offering flexibility across life stages.

Mount Currie View is a well-established modular home community known for tidy streets, mature trees, and strong pride of ownership. Quiet and neighbourly, it offers dramatic Mount Currie views and direct access to Pemberton Creek trails linking One Mile Lake, parks, and wetlands. Residents enjoy a nature-connected lifestyle close to schools, shops, and services.



BUILT IN BC FOR DURABILITY, COMFORT, EFFICIENCY, AND MODERN LIVABILITY.

Modern Interiors & Finishes

- › European-style kitchen shaker cabinetry with crown moulding
- › Full stainless steel appliance package
- › Ceramic tile kitchen and bath backsplashes
- › Single-slope ceilings for a modern, open feel
- › Quality vinyl plank and cushioned flooring options
- › Comfort-height, dual-flush toilets with efficient bath ventilation

Built for Mountain Conditions

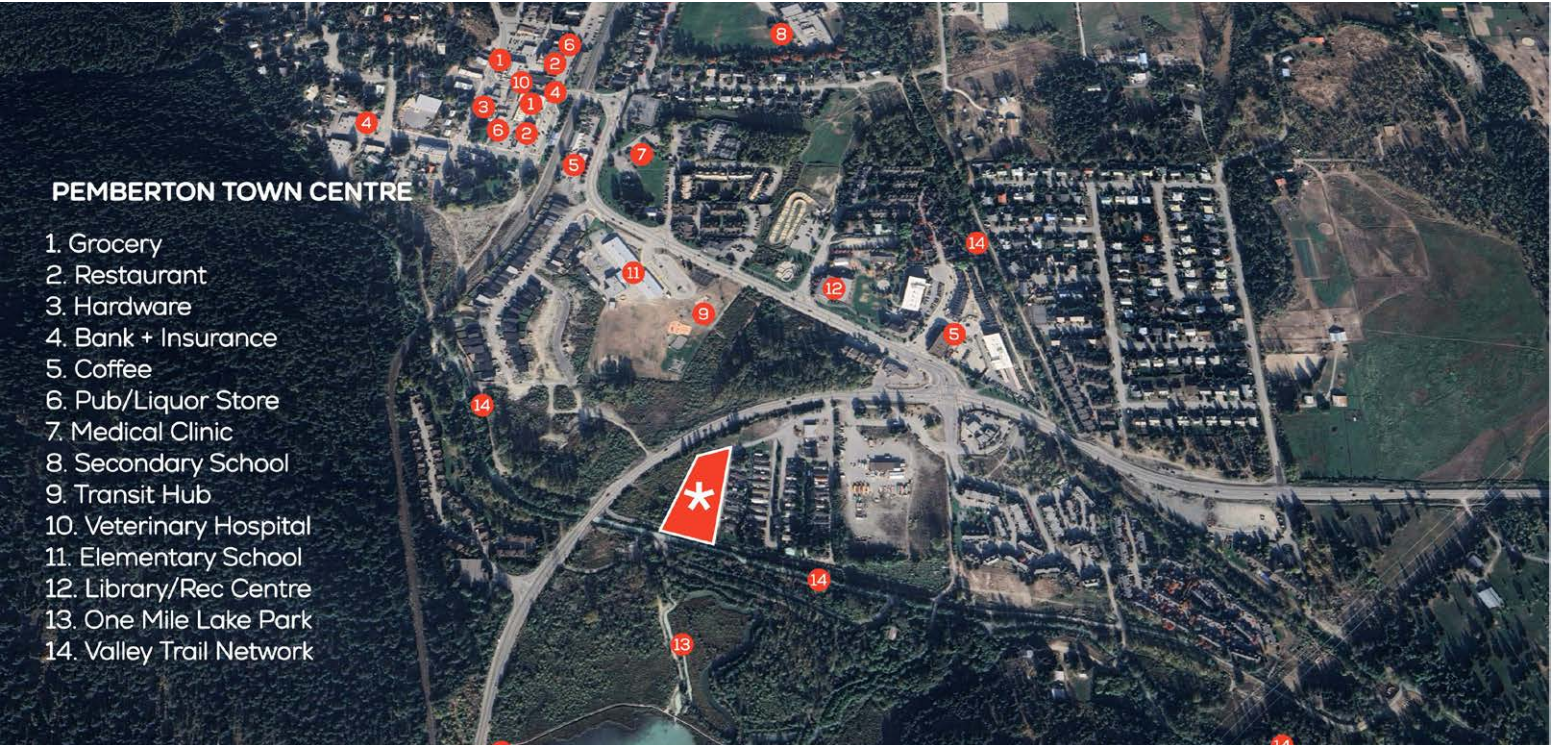
- › Built to CSA Z-240 Zone 4 & 5 standards
- › Engineered for high snow loads (136 psf GSL)
- › Ten-year structural warranty
- › 2×10 floor joists with 2×6 exterior wall construction
- › Durable metal roofing system
- › Fiber cement siding with corrugated metal accents
- › High-performance insulation: R33 ceilings, R22 walls, R32 floors
- › Double Low-E, argon-filled windows with vinyl sills
- › Heat Recovery Ventilation (HRV) system
- › Baseboard heating with heat-tape plug for winter conditions
- › 125-amp electrical service with modern safety systems
- › Radon gas pipe installed for added peace of mind

MT. CURRIE VIEW VILLAGE

Enjoy Your Life in Naturally
Beautiful Pemberton BC

PEMBERTON TOWN CENTRE

1. Grocery
2. Restaurant
3. Hardware
4. Bank + Insurance
5. Coffee
6. Pub/Liquor Store
7. Medical Clinic
8. Secondary School
9. Transit Hub
10. Veterinary Hospital
11. Elementary School
12. Library/Rec Centre
13. One Mile Lake Park
14. Valley Trail Network



Pemberton Farmers' Market in Community Barn
Downtown Pemberton Village

PEMBERTON. WHERE MOUNTAINS, FARMLAND, AND COMMUNITY MEET.

Pemberton, British Columbia is a mountain town known for its dramatic landscapes, outdoor recreation, and a relaxed, friendly pace of life. Surrounded by peaks, farmland, and trail networks, it offers a nature-connected lifestyle just 20 minutes north of Whistler. Home to young families, local farmers, and professionals, the community centres around Mt. Currie, One Mile Lake, and Pemberton Meadows offering year round biking, hiking, and everything else outdoors. Pemberton also provides schools, shops, dining, health services, and a new BC Transit exchange, balancing peaceful living with everyday convenience and access to adventure and opportunity.

BRAND NEW CONTEMPORARY MODULAR HOMES IN PEMBERTON BC

To schedule a tour please contact:

Frank Ingham
Cell 604 230 8167
Email frank@frankingham.com

Tom Davis *PREC
Cell 604 787 1456
Email tomdavis@telus.net



MTCURRIEVIEWVILLAGE.COM