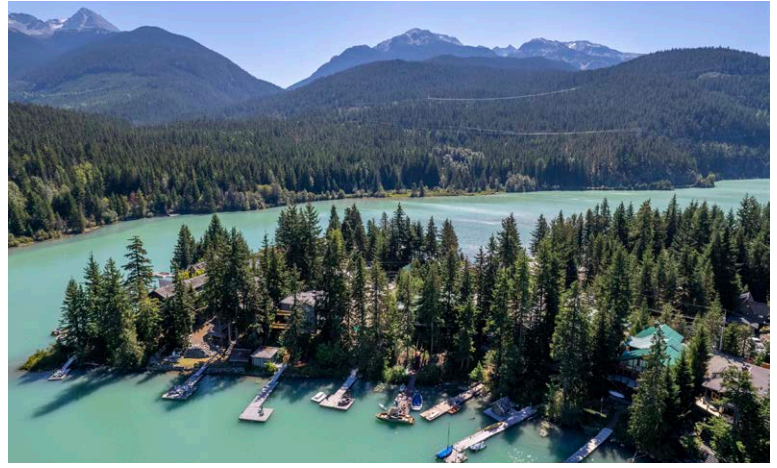


FEATURE

9297 Lakeshore Drive, Whistler, British Columbia



Rare Waterfront Luxury Meets Resort Adventure on Green Lake in Whistler

This beautifully crafted lakefront residence on Green Lake offers a bright and open layout across approximately 3,248 square feet with 57.72 feet of waterfront. Zoned RS1, the home features four bedrooms, five bathrooms, and a large flex room. Ideal for either full-time living or weekend getaways, the home layout also offers a nanny or caretaker suite for added flexibility. Enjoy year-round recreation with direct lake access from your private dock, breathtaking mountain views, and close proximity to Whistler Village and the slopes. This is a rare opportunity to experience the perfect blend of natural beauty and four-season recreation.

LISTED FOR \$5,795,000

📞 (604) 230-8167 ✉️ Frank@FRANKINGHAM.COM

The information in this feature sheet is provided by members of the Greater Vancouver REALTORS® (the Boards) and is from sources believed reliable but should not be relied upon without verification. The Boards assume no responsibility for its accuracy.

CONNECTING VANCOUVER, SEA TO SKY, AND PEMBERTON BUYERS AND SELLERS.



MARKETED BY
FRANK INGHAM
REAL ESTATE



DIAMOND
AWARD 2024
Royal LePage DIAMOND AWARD Top Producing Agent

ROYAL LEPAGE **Sussex**
LEADING REALTOR

FEATURE

9297 Lakeshore Drive, Whistler, British Columbia



Key Features & Highlights

- Built in 2000, RS1 zoning
- 7,556 sq ft lot size
- 3,248 sq ft interior space
- Wide plank hardwood flooring
- Soaring river rock feature fireplace
- Vaulted ceiling with full height panoramic windows
- Four balconies with glass railings
- Exposed structural wood beams
- Large open entertainer's kitchen
- Dining seats eight comfortably
- Four bedrooms, five bathrooms
- Flexible nanny or caretaker suite
- Master with double-sided fireplace
- Spa-style ensuite with lake view
- Private dock and hot tub
- Three balconies, main-level patio

Your Year-Round Whistler Escape Starts Here

The craftsman style mountain home features a bright, open layout and timeless design elements, including a soaring river rock fireplace, expansive views through floor to ceiling windows, a vaulted ceiling exposed timber beams, and wide plank hardwood floors. The outdoor living space is exceptional, with a large patio on the main floor, three balconies on the upper level, and a lower-level deck with a hot tub.

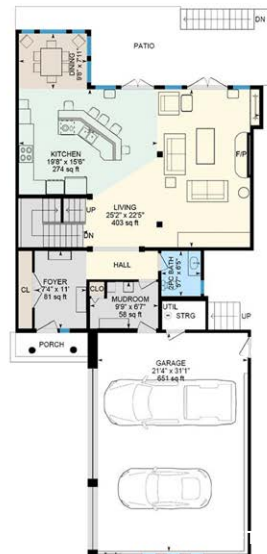
Built in 2000 and owned by the current sellers since 2005, the home has undergone key upgrades, including a propane furnace and hot water tank, both approximately two years old, and a roof replacement about 7–8 years ago. Extras include a hot tub, two hydro meters, Shaw internet/TV, security system, and most furniture included.



The main living area of this lake home is warm, welcoming, and designed for connection. A soaring river rock fireplace anchors the space, complemented by massive exposed timber beams, a vaulted ceiling, and wide plank hardwood floors. The open-concept functional kitchen offers plenty of room to cook, entertain, and gather while the dining room beside the kitchen, with seating for eight, features beautiful lake views and bright open skylights.



TOTAL AREA - 3,248 SQ FT
TOTAL AREA INCLUDES 6" OF EXTERIOR WALLS



The spacious primary bedroom is a serene lakeside retreat designed for comfort and relaxation. A double-sided gas fireplace adds warmth and ambiance, creating a cozy atmosphere in both the bedroom and the ensuite. Panoramic views from the soaking tub offer a breathtaking backdrop of lake and mountain scenery. With fabulous views from every angle, it's a perfect private escape.

LOCATION

9297 Lakeshore Drive, Whistler, British Columbia



Just minutes from Whistler Village, yet peaceful and private, this rare lakefront property offers stunning views of Wedge and Armchair Mountains. Whether for family getaways, investment, or full time living, this four season home provides tranquility, fun, and adventure in one of North America's most sought-after world class resort destinations.

LISTED FOR \$5,795,000

📞 (604) 230-8167 ✉️ Frank@FRANKINGHAM.COM

The information in this feature sheet is provided by members of the Greater Vancouver REALTORS® (the Boards) and is from sources believed reliable but should not be relied upon without verification. The Boards assume no responsibility for its accuracy.

CONNECTING VANCOUVER, SEA TO SKY, AND PEMBERTON BUYERS AND SELLERS.



MARKETED BY

**FRANK
INGHAM**
REAL ESTATE



DIAMOND
AWARD 2024

ROYAL LEPAGE | **Sussex**
LEADING REALTOR

Royal LePage DIAMOND AWARD Top Producing Agent