

FEATURE

1357 Elmwood, Pemberton, BC



9 BED / 7 BATH HOME INCLUDING SECONDARY SUITE IN BENCHLANDS

Situated just 36 km from Whistler British Columbia, this beautiful 5,000 square foot hand-crafted custom home is perfect for a larger family plus their extended. A piece of paradise set against the backdrop of Mt. Currie, and within walking distance to downtown, the home features vaulted timber ceilings where sunshine streams through, highlighting stunning handcrafted and meticulously cared-for finishes. The property has BnB zoning which means the opportunity to live in one of the most wonderful places on Earth while owning an investment with revenue opportunities.

☎ (604) 230-8167 ✉ Frank@FRANKINGHAM.COM

CONNECTING VANCOUVER, SEA TO SKY, AND PEMBERTON BUYERS AND SELLERS.



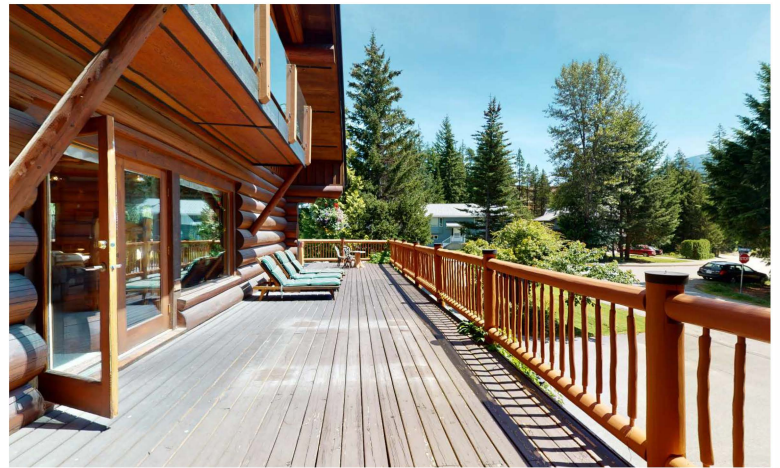
MARKETED BY

**FRANK
INGHAM**
REAL ESTATE

TOP 3% DIAMOND LEADING REALTOR **ROYAL LEPAGE** **Sussex**
* 2020 Royal LePage Sussex DIAMOND AWARD top producing agent

DETAILS

1357 Elmwood, Pemberton, BC



UNIQUE FEATURES

- 5,000 sq ft with 9 bedrooms and 7 bathrooms incl. separate suite
- 5 bedrooms have ensuites
- Large media/family room + wine cellar
- Wrap around upper deck with hot tub facing the views
- Secondary suite has 2 separate entrances from lower level and can be reconfigured to possibly two suites

PEACEFUL LIVING IN PEMBERTON'S FAMILY NEIGHBOURHOOD

Spacious and cozy inside with plenty of ambiance, the home features six beds and six baths on two floors and an open Great Room for large gatherings and entertaining. The home has so much opportunity and can be configured in many ways, including a high-end BnB.

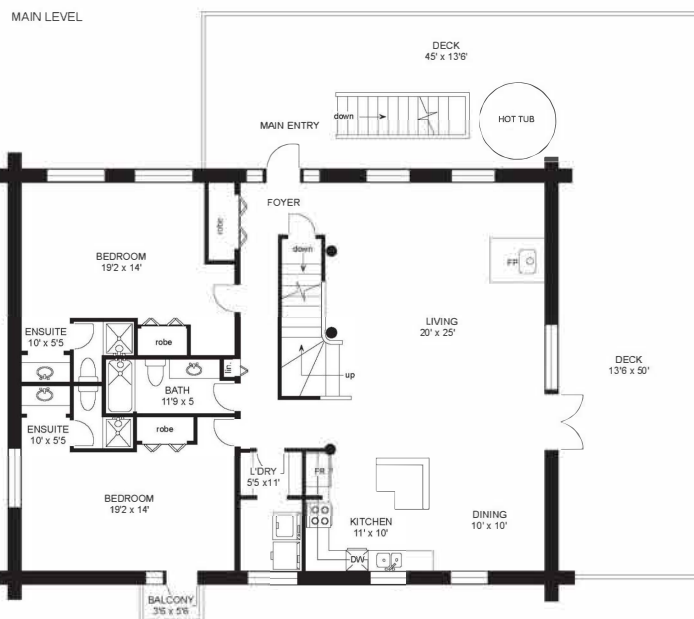
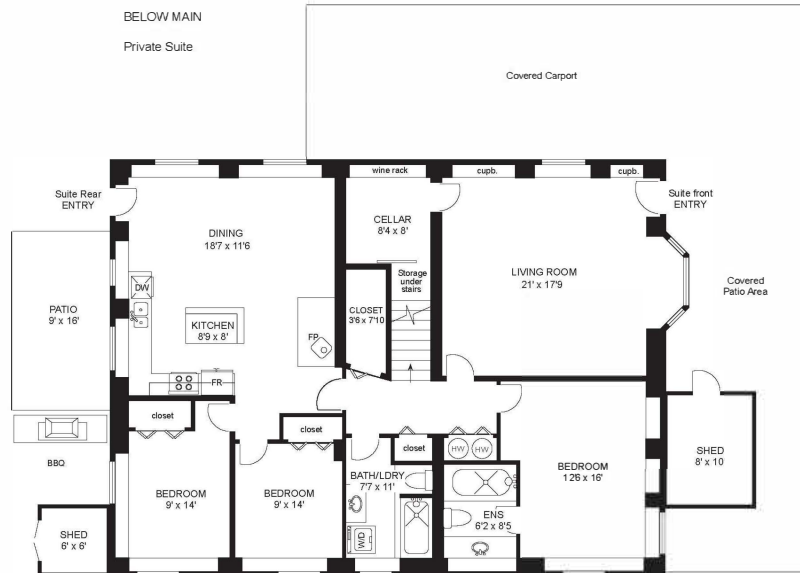
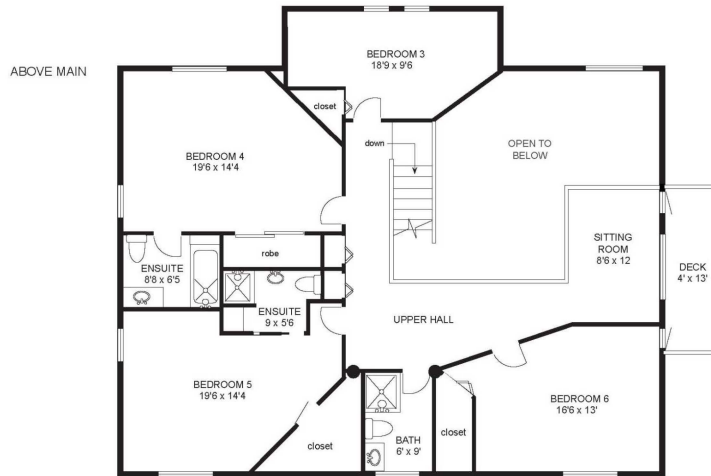
Outside, the wraparound deck offers beautiful views where one can lounge in the hot tub after a day of adventure. The lush backyard, which borders trails and the community park, is spacious with a beautiful garden, intimate social spaces, and a barbeque area.

A ground-level three bed suite can be a revenue opportunity or configured as a two-bed suite with a kitchen and a one bed suite with a convenience kitchen to act as a second mortgage helper.



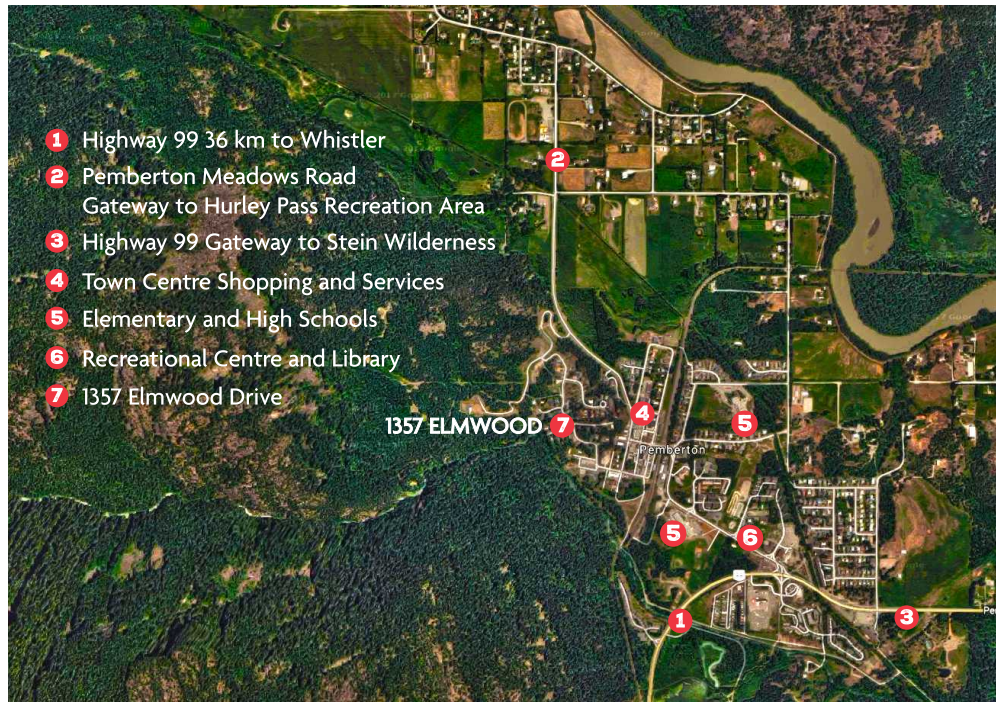
LAYOUT

1357 Elmwood, Pemberton, BC



LOCATION

1357 Elmwood, Pemberton, BC



3 MINUTES TO DOWNTOWN, 25 MINUTES TO WHISTLER, 2.25 HOURS TO VANCOUVER

Pemberton is a beautiful 25 minute drive north of Whistler, ranked one of the world's top four season destination resorts. Located at the foot of majestic Mt. Currie, the Pemberton Valley is the gateway to everything outdoors. A rural family community, The Benchlands is centrally located for easy access to town, lakes, golf, and back country adventure. Walk easily to schools, shopping, restaurants, and all community amenities and services in about 10 minutes or drive in 3.

LISTED AT \$2,299,000

☎ (604) 230-8167 ✉ Frank@FRANKINGHAM.COM

CONNECTING VANCOUVER, SEA TO SKY, AND PEMBERTON BUYERS AND SELLERS.



MARKETED BY

**FRANK
INGHAM**
REAL ESTATE



DIAMOND
LEADING REALTOR



Sussex

* 2020 Royal LePage Sussex DIAMOND AWARD top producing agent