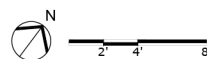
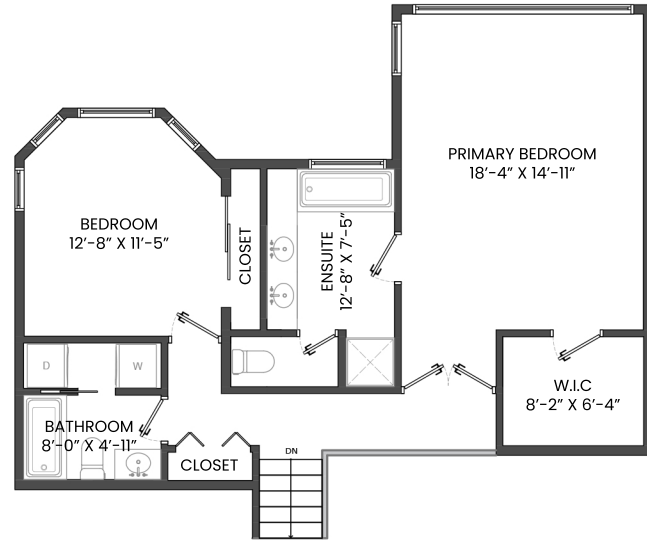
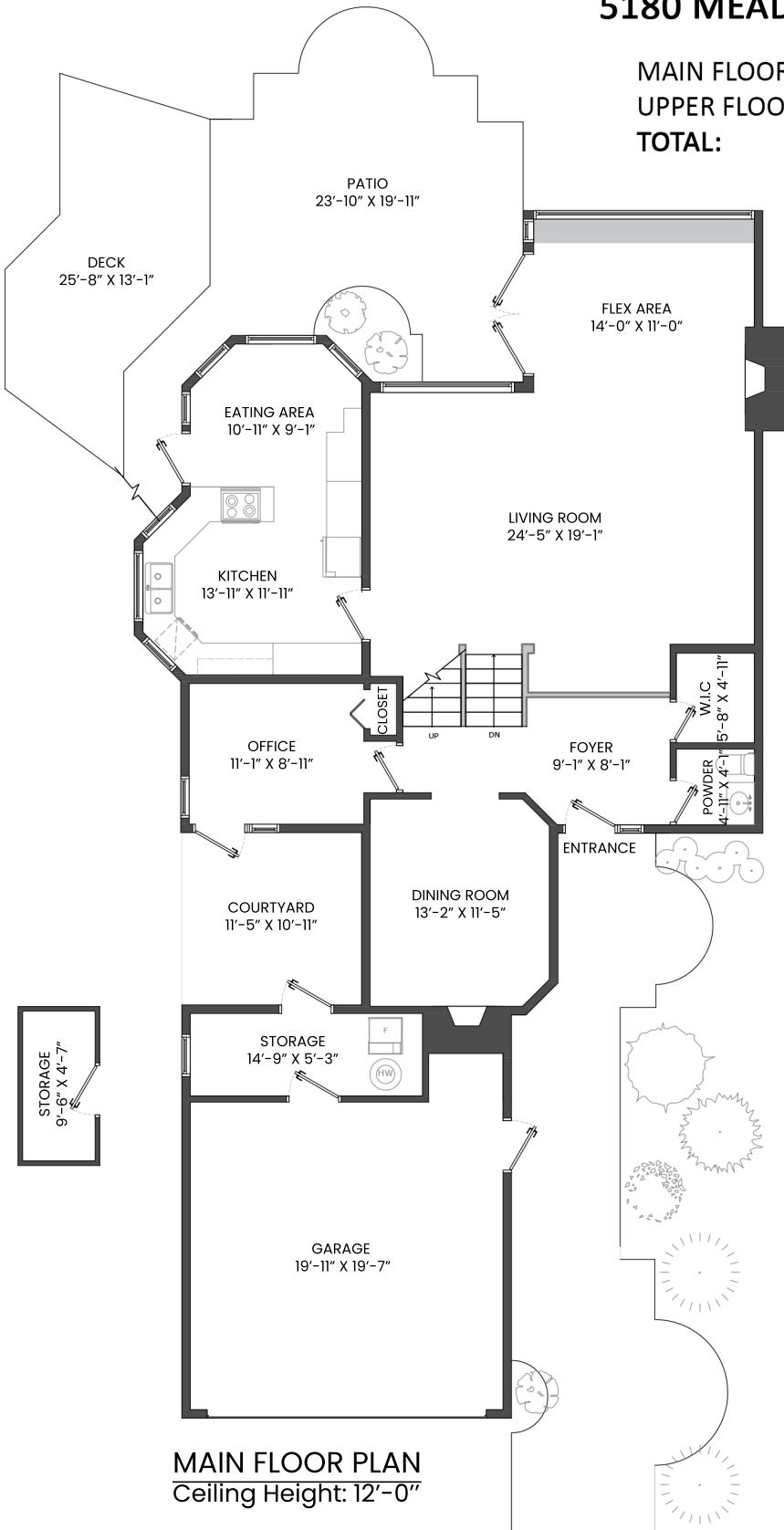


5180 MEADFIELD ROAD, WEST VANCOUVER, BC

MAIN FLOOR TOTAL: 1,449 SQ.FT. **PATIO:** 732 SQ. FT.
UPPER FLOOR TOTAL: 853 SQ.FT. **GARAGE:** 532 SQ. FT.
TOTAL: 2,302 SQ.FT. **DECK:** 210 SQ. FT.
COURTYARD: 125 SQ. FT.
STORAGE: 56 SQ. FT.



Franco Diligenti PREC*
 604.842.2668
 franco@francodiligenti.com
 www.francodiligenti.com

Emily Sandhack PREC*
 604.339.9150
 emilysandhack@gmail.com
 www.emilysandhack.com



* PERSONAL REAL ESTATE CORPORATION. THE FLOOR PLAN ILLUSTRATION IS NOT SUITABLE FOR CONSTRUCTION/ ARCHITECTURAL PURPOSES. MEASUREMENTS ARE APPROXIMATE AND MAY NOT BE TO SCALE. E&O INSURED. FLOOR PLAN DESIGNED BY ISHOT.CA ENTERPRISES INC. 604-368-7979 ISHOT.CA