

#205 1518 Bowser Avenue North Vancouver, BC

ENCLOSED LIVING AREA: 1340 SQ.FT.

OTHER AREA(S)

DECK(S): 218 SQ.FT.*

DAX ELIOT

Personal Real Estate Corporation

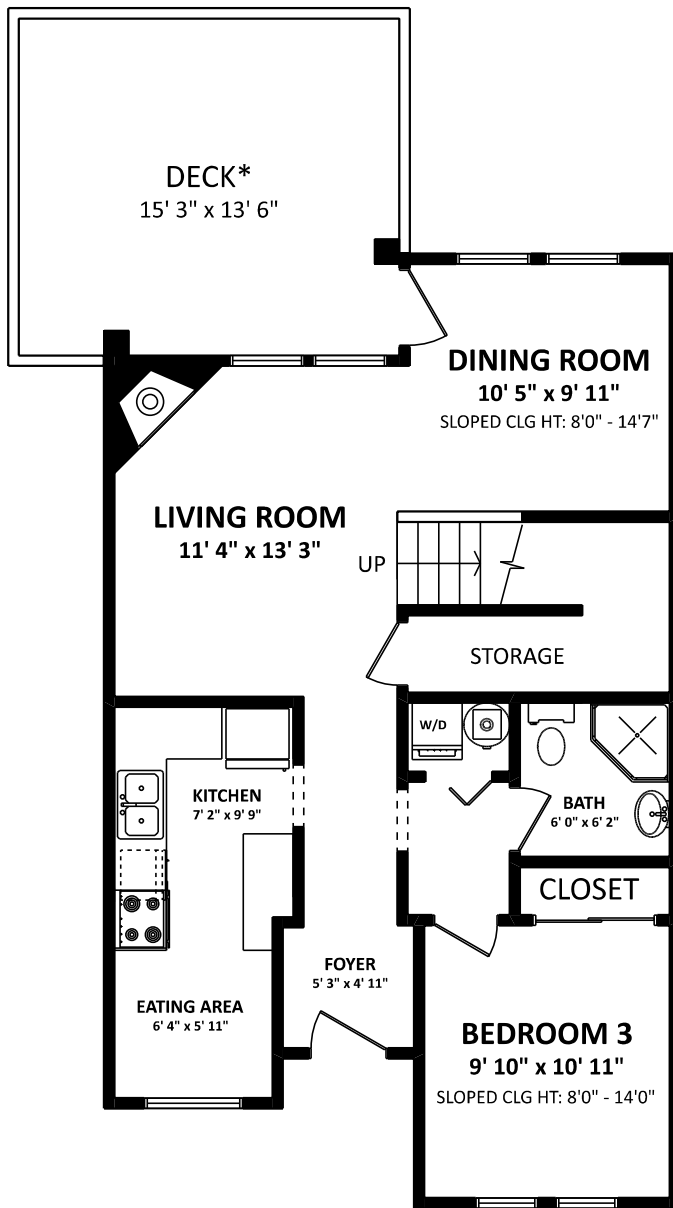
Sutton Group West Coast (North Vancouver)

Phone: 604-986-9321

Cell: 604-306-6846

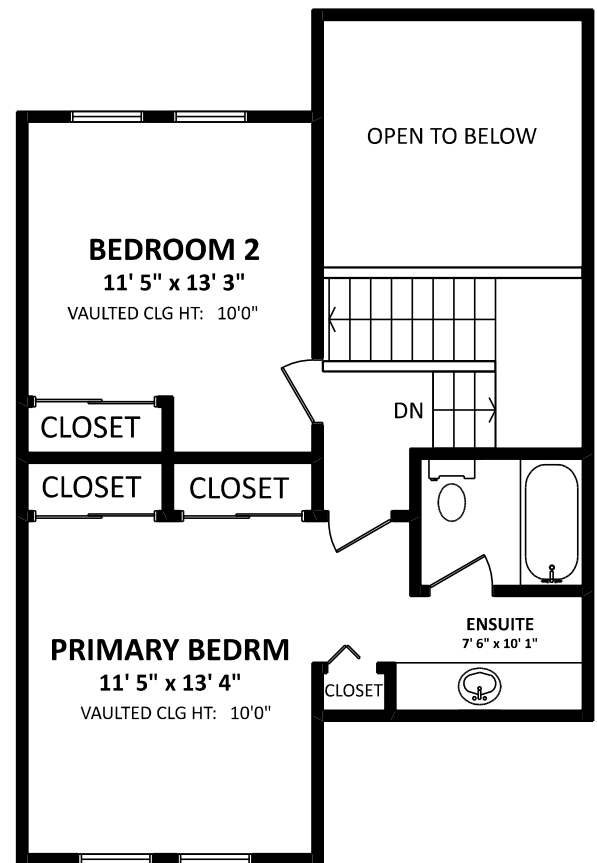
deliot@sutton.com

www.daxeliot.com



MAIN FLOOR: 774 SQ.FT.

CLG HT: 8'0"



UPPER FLOOR: 566 SQ.FT.

MARCH 31, 2026



TEL: 604-575-1244

www.seevirtual360.com

DISCLAIMERS:

1. MEASUREMENTS ARE FOR PROMOTIONAL USE ONLY & ARE NOT INTENDED FOR CONSTRUCTION USE. ROOM DIMENSIONS ARE APPROXIMATE. MEASUREMENTS & CALCULATIONS FOR FINISHED AREAS ARE E&O INSURED.
 2. ENCLOSED LIVING AREAS COMPRISES THE LIVING UNIT ENCLOSURES OF EACH OCCUPANT THAT ARE SUITABLE FOR HUMAN OCCUPANCY AND INCLUDE ALL OF THE ENCLOSED AREAS THAT A SINGLE OCCUPANT HAS EXCLUSIVE USE OF.
 3. FOR MULTI-FAMILY PROPERTIES, SQUARE FOOTAGE OF EACH LEVEL IS CALCULATED TO THE OUTSIDE OF THE BUILDING ENCLOSURE AND TO THE CENTERLINE OF THE DEMISING WALL. (ANSI/BOMA Z65.4-2023).
 4. THIS FLOOR PLAN MAY ONLY BE REPRODUCED WITH PERMISSION OF THE REALTOR(S) ON THIS FLOOR PLAN.
- * ANY MEASUREMENTS WITH AN ASTERISK (*) OR (APPROX) ARE APPROXIMATE AND FOR ILLUSTRATION PURPOSES ONLY AND ARE NOT E&O INSURED.

