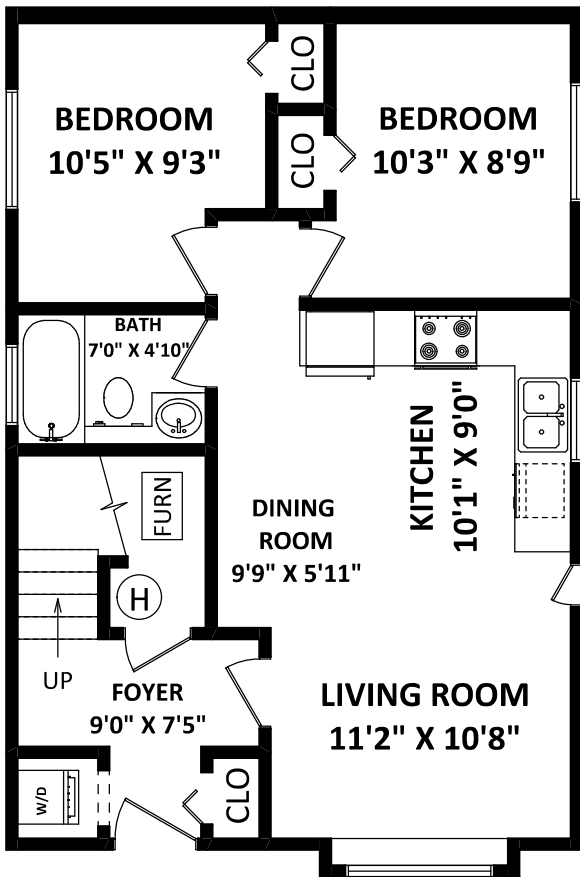
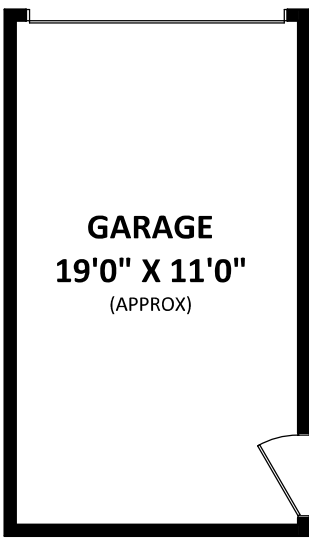


5416 Manor Street,
Burnaby, BC

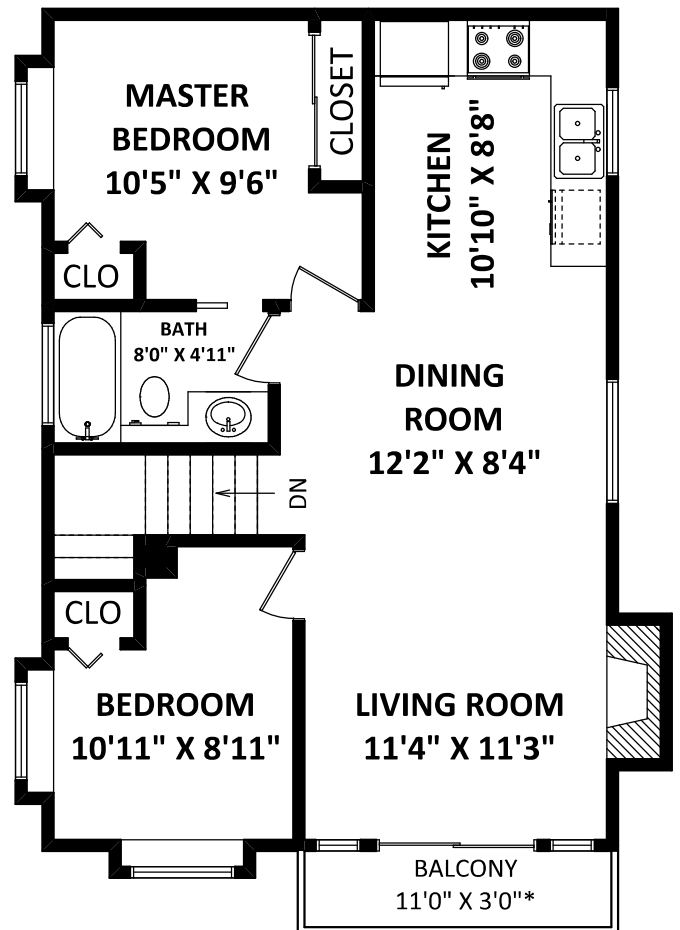
TOTAL FINISHED AREA: 1332 SQ.FT.

OTHER AREA(S)

GARAGE: 218 SQ.FT.*
BALCONY: 37 SQ.FT.*



LOWER FLOOR: 665 SQ.FT.



MAIN FLOOR: 667 SQ.FT.

FLOOR PLAN BY:

[APRIL 15, 2019]



TEL: 604-575-1244

www.seevirtual360.com

DISCLAIMER:

1. MEASUREMENTS ARE FOR PROMOTIONAL USE ONLY & ARE NOT INTENDED FOR CONSTRUCTION USE. ROOM DIMENSIONS ARE APPROXIMATE. MEASUREMENTS & CALCULATIONS FOR FINISHED AREAS ARE E&O INSURED.
 2. FINISHED AREAS ARE ENCLOSED AREAS IN A HOUSE THAT ARE SUITABLE FOR YEAR-ROUND USE, EMBODYING WALLS, FLOORS, AND CEILINGS THAT ARE SIMILAR TO THE REST OF THE HOUSE. (ANSI 2765-2013)
 3. THIS FLOOR PLAN MAY ONLY BE REPRODUCED WITH PERMISSION OF THE REALTOR(S) ON THIS FLOOR PLAN.
- * ANY MEASUREMENT WITH AN ASTERISK (*) OR (APPROX) ARE APPROXIMATE AND FOR ILLUSTRATION PURPOSES ONLY AND ARE NOT E&O INSURED.



NORTH

