

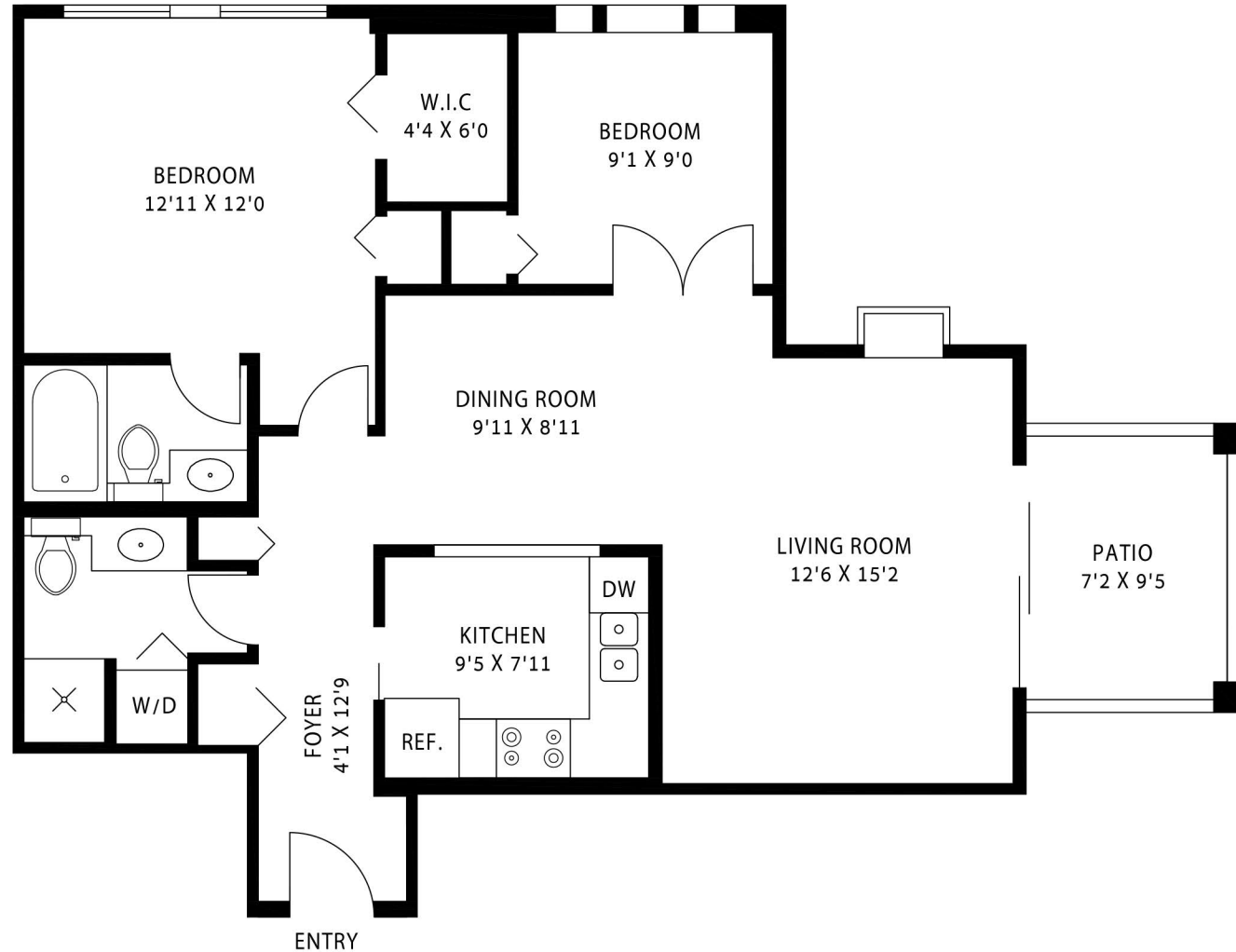
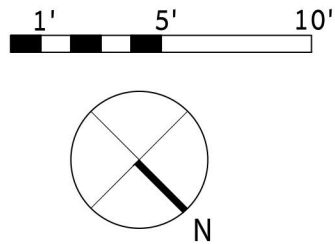
7 - 2150 MARINE DR  
WEST VANCOUVER, BC

PRESENTED BY:

**DAVID MACKENZIE**

604.290.3223  
davimack@shaw.ca

VIEW PHOTOS ONLINE AT:  
www.davimack.com



TOTAL LIVEABLE AREA 928 sqft  
PATIO 67 sqft

THIS FLOORPLAN IS FOR ILLUSTRATION PURPOSES ONLY AND ALL DIMENSIONS SHOULD BE CONSIDERED APPROXIMATE

FLOOR PLAN MEASURED AND DRAWN BY:  
**FULL MEASURE FLOOR PLANS**  
REAL ESTATE FLOOR PLANS AND PHOTOGRAPHY  
www.fullmeasure.ca | 778.847.7816

