

1586 APPIN DRIVE  
NORTH VANCOUVER, BC



PRESENTED BY:

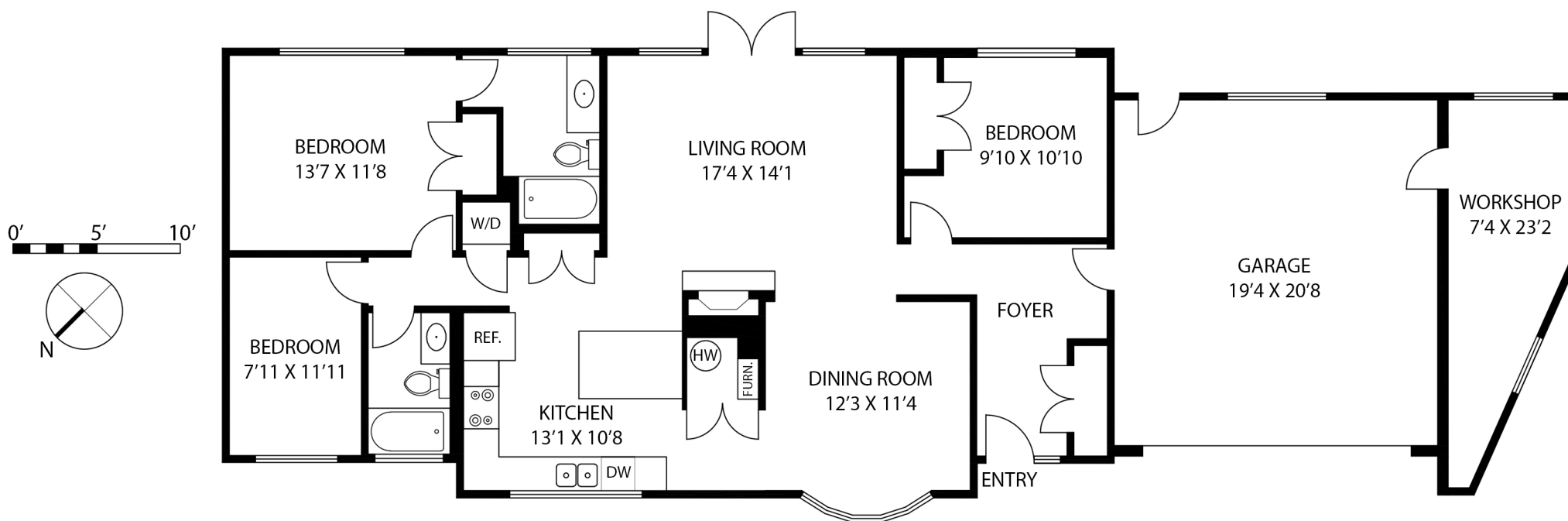
DAVID MACKENZIE

604.290.3223

davimack@shaw.ca

VIEW PHOTOS ONLINE AT:

[www.davimack.com](http://www.davimack.com)



TOTAL 1394 sqft

GARAGE 433 sqft  
WORKSHOP 143 sqft

THIS FLOORPLAN IS FOR ILLUSTRATION PURPOSES ONLY AND ALL DIMENSIONS SHOULD BE CONSIDERED APPROXIMATE

FLOOR PLAN MEASURED AND DRAWN BY:  
**FULL MEASURE FLOOR PLANS**  
REAL ESTATE FLOOR PLANS AND PHOTOGRAPHY  
[www.fullmeasure.ca](http://www.fullmeasure.ca) | 778.847.7816

