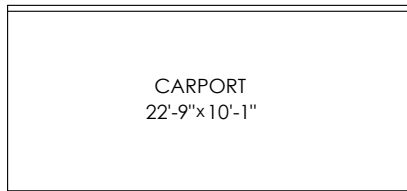


## 8758 Crest Drive Burnaby, B.C.

Main Floor: 787 sq.ft.  
 Upper Floor: 633 sq.ft.  
 Lower Floor: 608 sq.ft.  
 Basement Floor: 772 sq.ft.  
 Lower Cellar: 42 sq.ft.

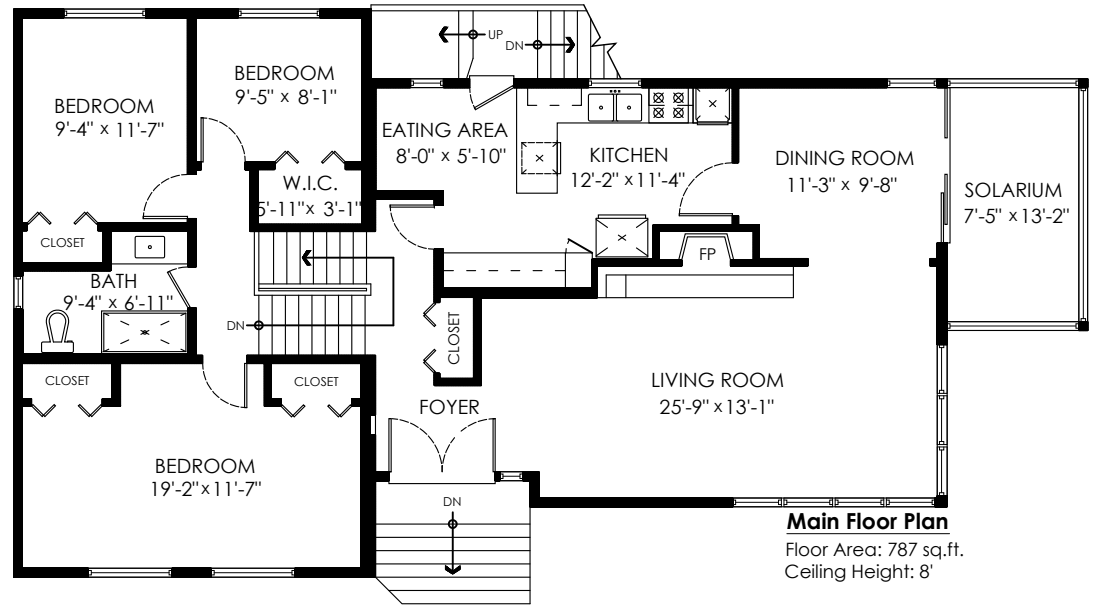
**Total: 2,842 sq.ft.**

Carports: 690 sq.ft.  
 Solarium: 113 sq.ft.  
 Ext. Storage: 134 sq.ft.  
**Total Extras: 937 sq.ft.**



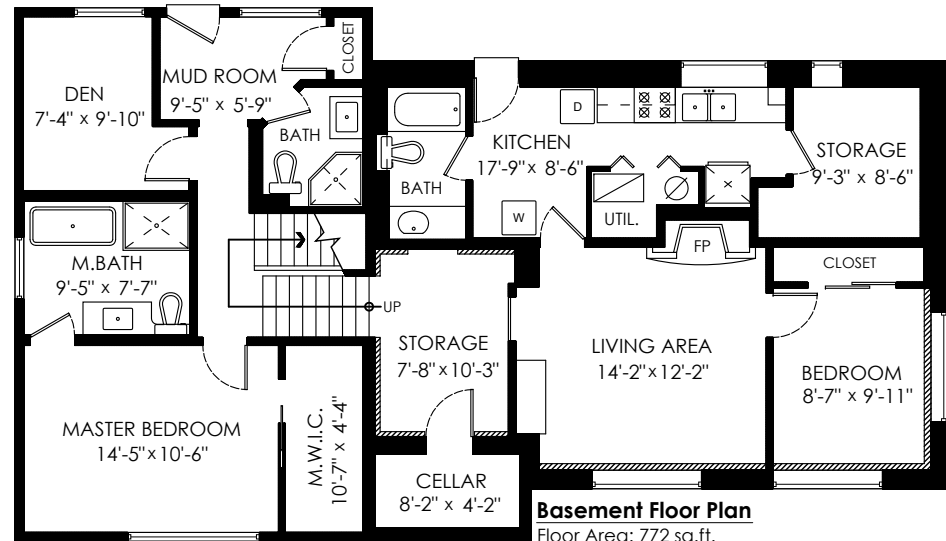
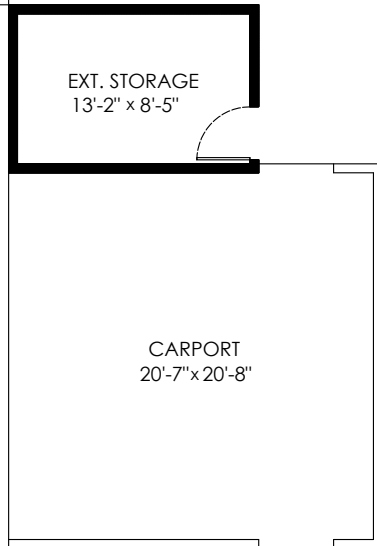
### Upper Floor Plan

Floor Area: 633 sq.ft.  
 Ceiling Height: 8'



### Main Floor Plan

Floor Area: 787 sq.ft.  
 Ceiling Height: 8'



### Basement Floor Plan

Floor Area: 772 sq.ft.  
 Cellar Area: 42 sq.ft.  
 Ceiling Height: 8'

### Lower Floor Plan

Floor Area: 608 sq.ft.  
 Ceiling Height: 8'

