

LISTING  
features

27-2603 162 Street, Surrey



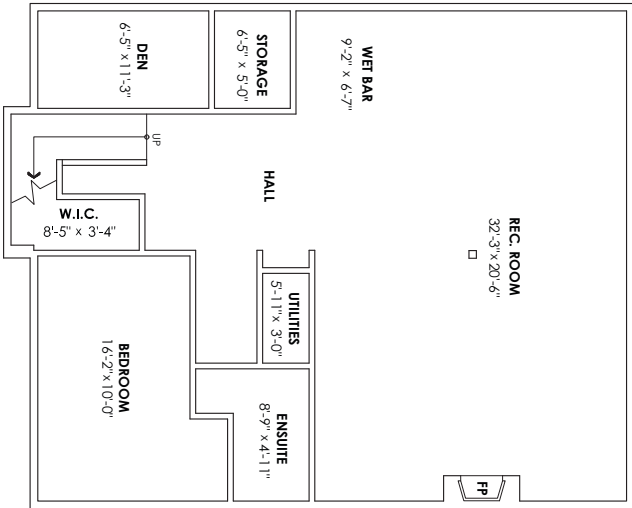
Sutton Group - WestCoast Realty  
AN INDEPENDENT MEMBER BROKER  
Bus: 604.538.8888  
Cell: 604.418.5786  
Fax: 604.538.0237  
evon@evonmayer.com  
www.evonmayer.com

Evon Mayer

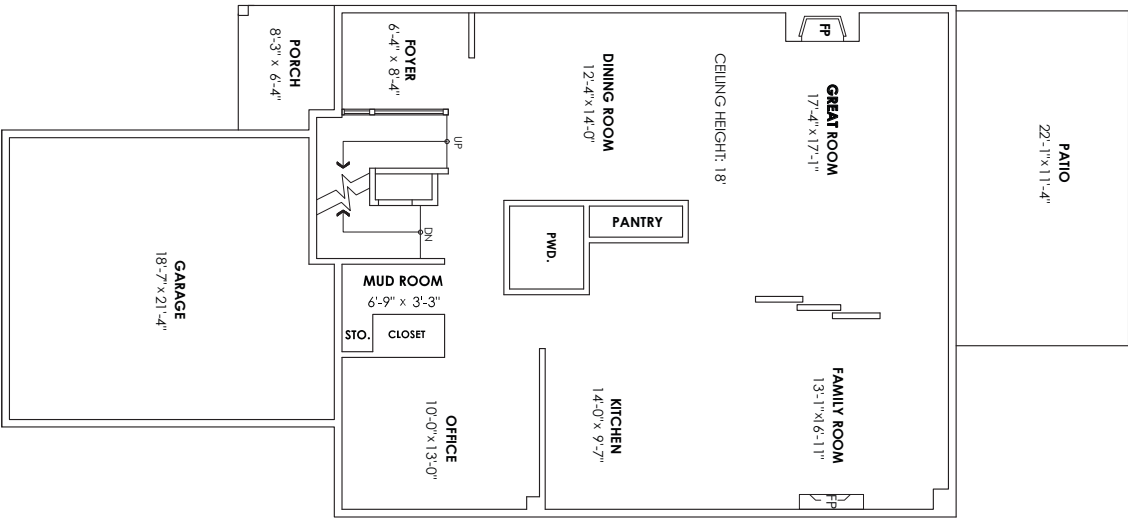


Evon Mayer  
604-418-5786  
evon@evonmayer.com  
www.evonmayer.com  
Sutton Group West Coast Realty (Surrey24)

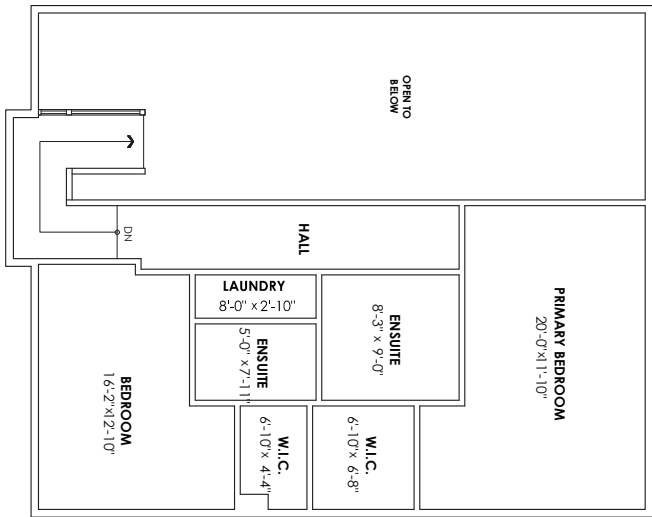
Lower Floor Plan  
Floor Area: 1,339 sq.ft.  
Ceiling Height: 9'



Main Floor Plan  
Floor Area: 1,394 sq.ft.  
Ceiling Height: 9'



Upper Floor Plan  
Floor Area: 907 sq.ft.  
Ceiling Height: 8'



27-2603 162 Street, Surrey  
Lower Floor: 1,339 sq. ft. Patio: 250 sq. ft.  
Main Floor: 1,394 sq. ft. Porch: 50 sq. ft.  
Upper Floor: 907 sq. ft. Garage 413 sq. ft.  
Total Livable: 3,640 sq. ft. Total Extras: 713 sq. ft.



The enclosed information while deemed to be correct, is not guaranteed. This communication is not intended to solicit properties already listed for sale.

Produced and printed by cotala www.cotala.com





TAKE THE TOUR



Vinterra Villas - Executive Living. Prestigious location with Views & Privacy! Prime Location in Vinterra. Large, sunny, west facing rear yard backs onto private park, walking trails. Southwest patio ideal for evening BBQs. 3 Bedroom + office + den + 4 Bath - 3750 sf. Luxury finishes with exceptional privacy! Chef's kitchen with designer upgrades throughout. Elegant dining & entertaining spaces are welcoming to guests year round! Hardwood floors, new carpet & designer paint. Spacious bedrooms all ensuited & thoughtfully separated in this great floorplan. 18' ceiling heights on main. 9' ceilings up & down with large windows. Double garage. Minutes to shopping, recreation centre, sports venues, parks, transit, Private schools, etc. +++ Original owners. Move in Ready. Gym, Clubhouse, Outdoor Firepit, Vineyards. Show & sell!

COMPLIMENTS OF

*Evon Mayer*

Maint. Fee	\$721.60
Size	3,570 SF
Bedrooms	3 + Den + Office
Bathrooms	4