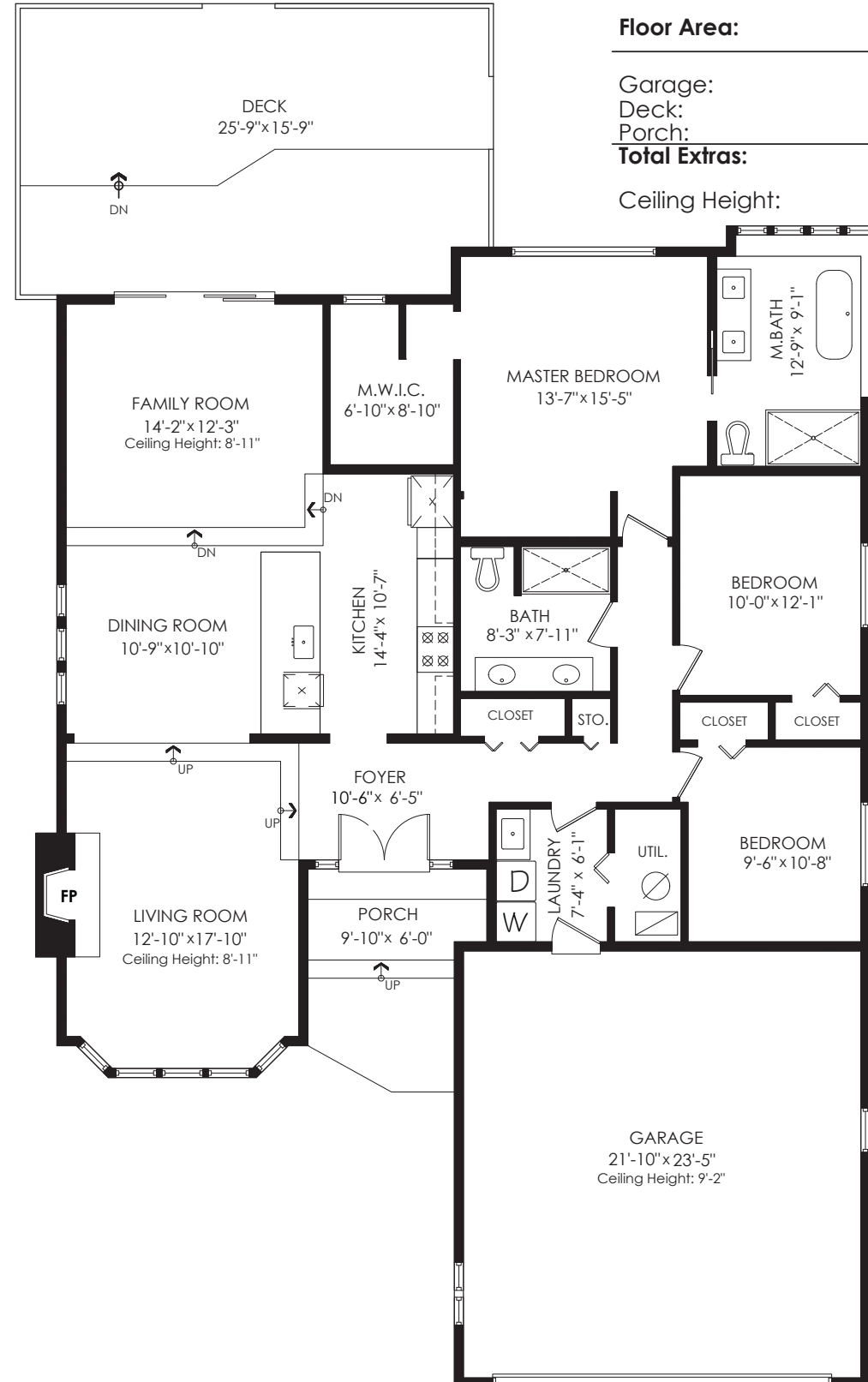




**Evon Mayer 604-418-5786**

evon@evonmayer.com | www.evonmayer.com

**16124 10th Avenue,  
Surrey**



**Floor Area:** 1,736 sq.ft.

Garage: 548 sq.ft.

Deck: 414 sq.ft.

Porch: 100 sq.ft.

**Total Extras:** 1,062 sq.ft.

Ceiling Height: 7'-11"

## LISTING features

16124 10 Avenue, Surrey



Sutton Group - WestCoast Realty  
AN INDEPENDENT MEMBER BROKER

**Bus: 604.538.8888**

Cell: 604.418.5786

Fax: 604.538.0237

evon@evonmayer.com

www.evonmayer.com

*Evon Mayer*



The enclosed information while deemed to be correct, is not guaranteed.  
This communication is not intended to solicit properties already listed for sale.

Produced and printed by **cotala** www.cotala.com

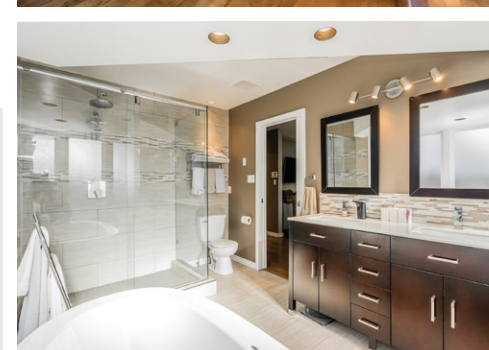
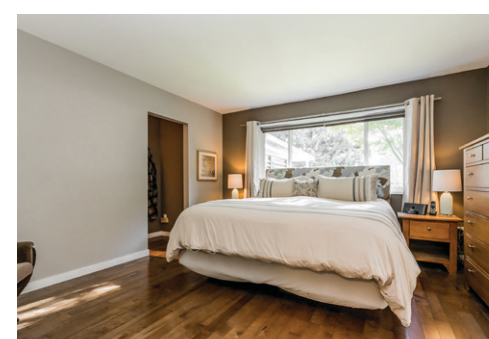
E&O Insured for \$3,000,000. Total square foot calculated to gross unit area. SQFT based on interior measurements to exterior walls, not taken from original blueprints, may include unfinished area. This is for marketing purposes only and is not intended for architectural/construction use. All details, sizes & placements should be considered approximate within +/- 2% tolerance. www.PixlWorks.com





TAKE THE TOUR

16124 10 Avenue, Surrey



RENOVATED RANCHER! SOUTH FACING Rear Yard Features Fully Glass Covered Large Deck with BBQ Centre & Hot Tub open to Sunny Rear Yard. Entertainers Dream-You will LOVE IT! Open Concept Kitchen/Dining/Family & Living Space!! 3 Bed & 2 Bath! Kitchen boasts waterfall quartz island counter, KitchenCraft Cabinets, SS Appliances, Gas Cooktop. Updates include: roof, windows, gutters, fireplace, blinds, paint, maple hardwood, appliances, lighting, security system+++ 2 FULL Bathroom Updates, fencing & landscaping. Master Bedroom enjoys a luxury 5-piece ensuite. Private beautifully landscaped & fenced 6732sf Lot in peaceful McNally Creek. Central location in friendly quiet neighbourhood. South Meridian Elementary & EM Secondary school catchment & walking distance to Parks, Beaches, Recreation Centres, transit & shopping.

COMPLIMENTS OF  
*Evon Mayer*

Lot	6,732 sf
Size	1,736 sf
Bedrooms	3
Bathrooms	2