

3530 Rosemary Heights Crescent, Surrey

LISTING  
features



Sutton Group - WestCoast Realty  
AN INDEPENDENT MEMBER BROKER

Bus: 604.538.8888

Cell: 604.418.5786

Fax: 604.538.0237

evon@evonmayer.com

www.evonmayer.com

Evon Mayer



**Sutton** Evon Mayer 604-418-5786  
evon@evonmayer.com | www.evonmayer.com

3530 Rosemary Heights Cres, Surrey

Main Floor: 1,104 sq.ft.

Upper Floor: 1,087 sq.ft.

Lower Floor: 1,068 sq.ft.

**Total: 3,259 sq.ft.**

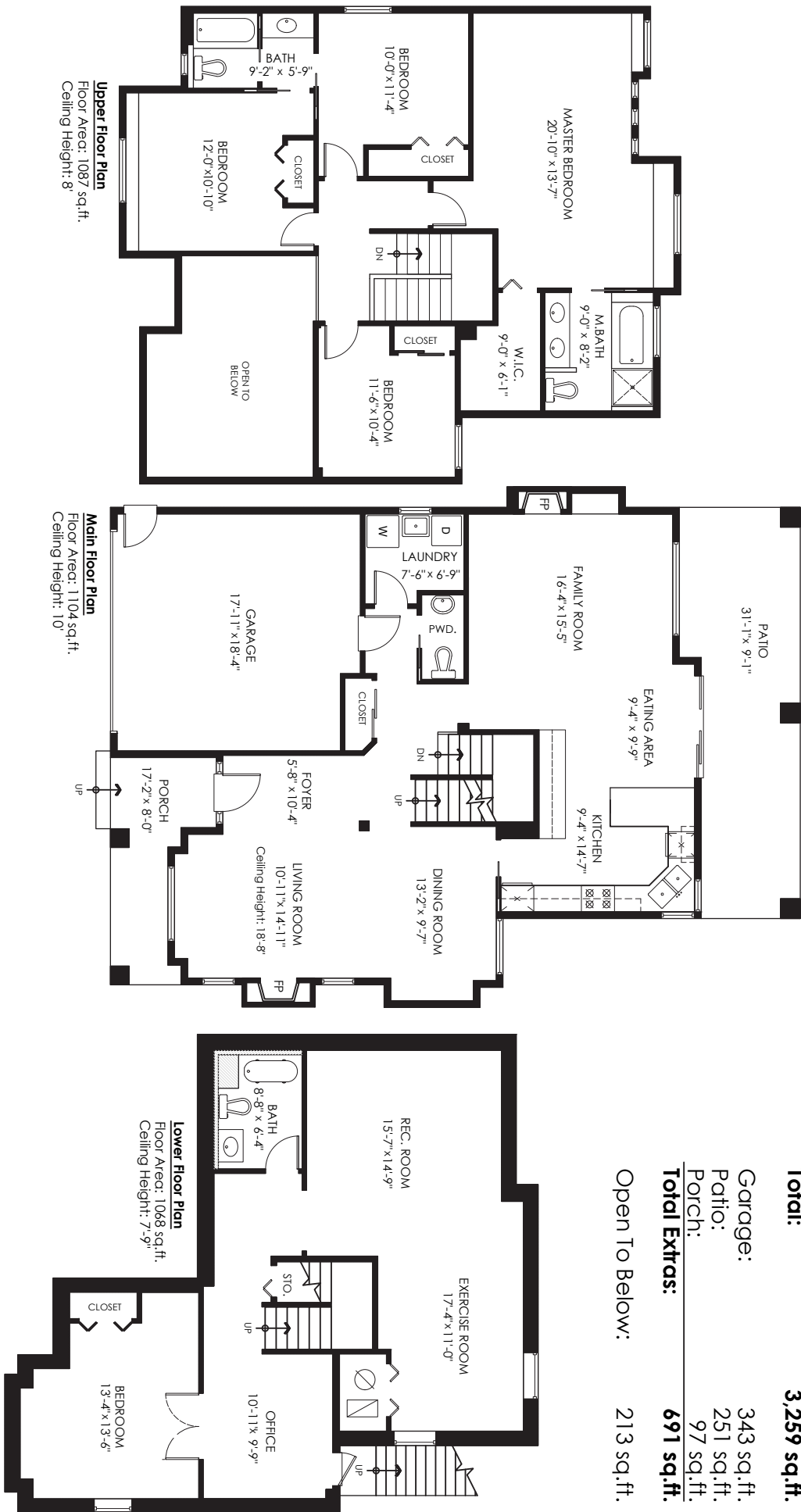
Garage: 343 sq.ft.

Patio: 251 sq.ft.

Porch: 97 sq.ft.

**Total Extras: 691 sq.ft.**

Open To Below: 213 sq.ft.



E&O Insured for \$1,000,000. Total square foot calculated to gross unit area SQFT based on interior measurements to exterior walls, not taken from original blueprints, may include unfinished area. www.DraftOnSite.com  
The enclosed information while deemed to be correct, is not guaranteed.  
This communication is not intended to solicit properties already listed for sale.

Measuring, Design & Permits | 604-876-3738

Produced and printed by



www.cotala.com





TAKE THE TOUR



SUPERIOR LOCATION. Like New Remodelled Executive home-Rosemary Heights. UPDATED-Hardwood,Heat pump/ AC,carpets, designer paint & lighting-Move in Ready. 4500sf South-facing lot-5bed/4bath home-4 BEDS UP!! Beautiful front covered Veranda & Rear PRIVATE GREENBELT w SOUTH private yard w spacious patio w BBQ hook-up & SUNNY grassy area-In-Ground Sprinklers front/rear. Main level 9' ceilings. Open Kitchen. 18' Soaring Vaulted Living w gas FP, & Dining area-great for entertaining. White Kitchen cabinets/NEW w Silestone & Stainless Steel appliances. SPACIOUS Master w Bright Windows & Parkview & 5-piece spa-inspired Ensuite. BsmtRecRm/ Exercise/Playroom/Bedroom/Bath/Rough-In-exit to rear yard. Double Garage/Storage. Walk to: Rosemary Heights Elementary, MC Golf, Parks, Restaurants, Montessori, Creative Kids, Shop.

COMPLIMENTS OF

*Evon Mayer*

Price	\$1,528,000
Tax	\$5272.97/2017
Lot	4,402 sf
Size	3,259 sf
Bedrooms	5
Bathrooms	4