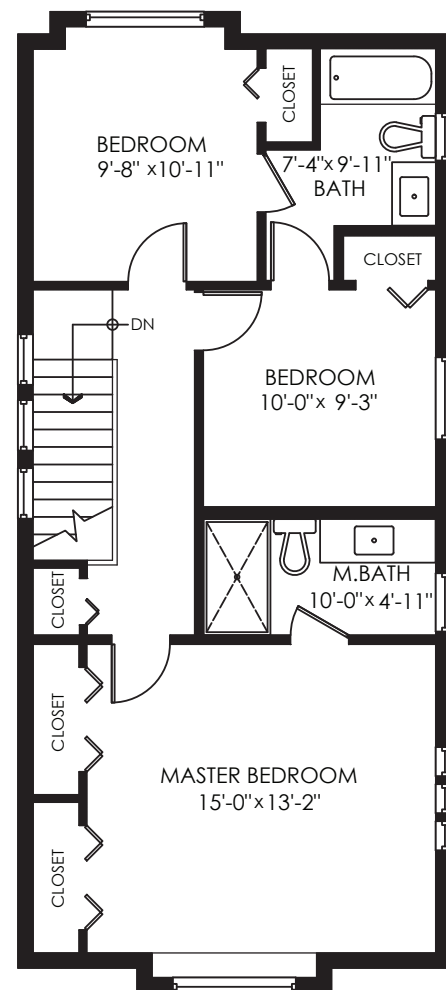
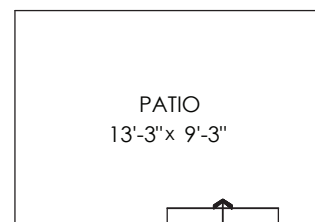
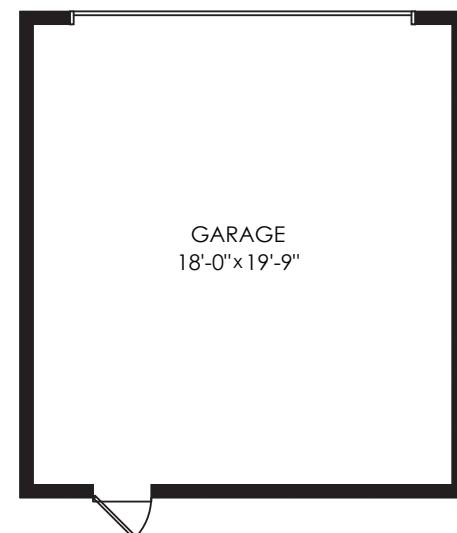
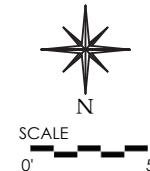
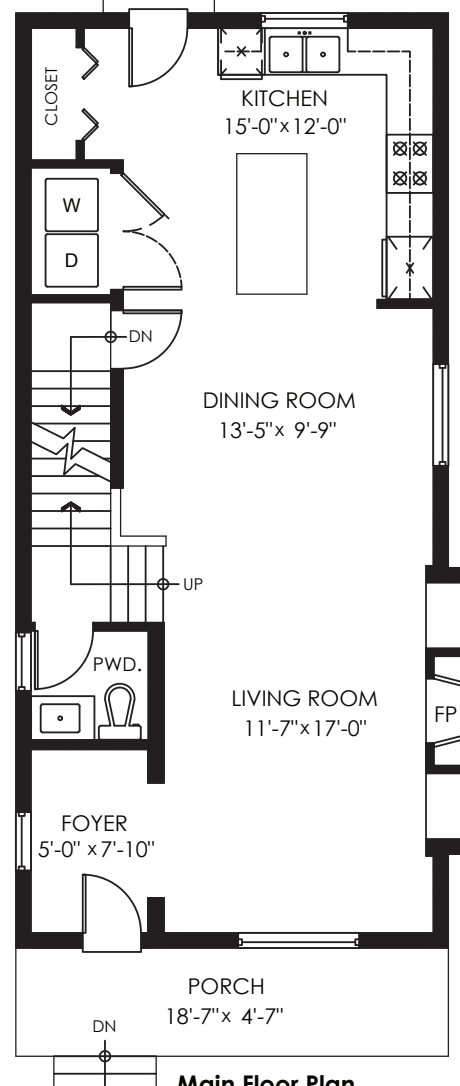


Main Floor: 744 sq.ft.  
Upper Floor: 752 sq.ft.  
Lower Floor: 744 sq.ft.  
**Total: 2,240 sq.ft.**

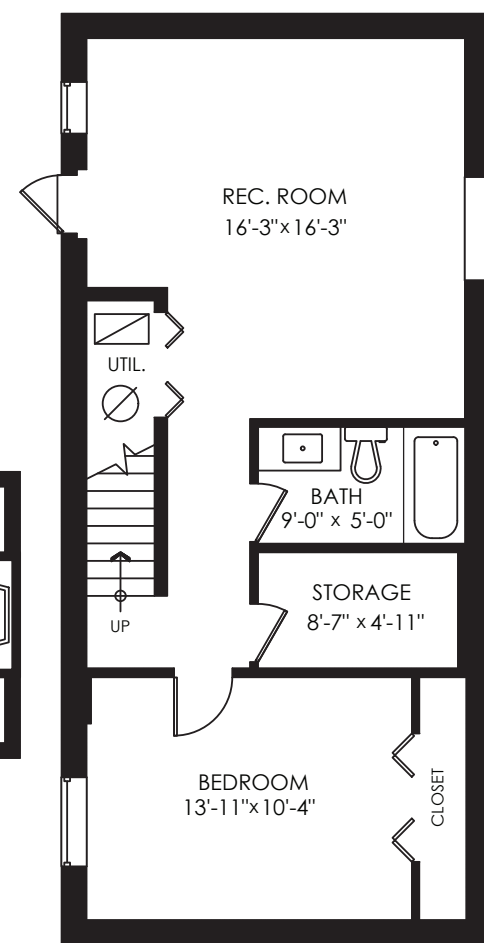
Garage: 399 sq.ft.  
Patio: 120 sq.ft.  
Porch: 86 sq.ft.  
**Total Extras: 605 sq.ft.**



**Upper Floor Plan**  
Floor Area: 752 sq.ft.  
Ceiling Height: 8'-1"



**Main Floor Plan**  
Floor Area: 744 sq.ft.  
Ceiling Height: 9'



**Lower Floor Plan**  
Floor Area: 744 sq.ft.  
Ceiling Height: 8'



Sutton Group - WestCoast Realty  
AN INDEPENDENT MEMBER BROKER

Bus: 604.538.8888

Cell: 604.418.5786

Fax: 604.538.0237

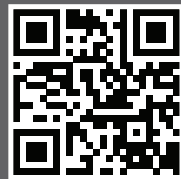
evon@evonmayer.com

www.evonmayer.com

*Evon Mayer*







TAKE THE TOUR

17266 2 Avenue, Surrey



WINNER!! Superior LOCATION. Cressey-built-Summerfield. Quality Built Green with Energuide rating of 77-hard plank siding, 40 year roof, low E windows. Situated on a 3132sf South-facing lot this 4bed/4bath home has beautiful street appeal w its front covered Veranda & Mature rear cedar hedging boasting SOUTH private yard w spacious patio w BBQ hook-up & SUNNY grassy area. Main level 9' ceilings open concept Kitchen, Living w gas FP, & Dining area is great for entertaining. Kitchen features Granite & Stainless Steel appliances. Spacious Master w vaulted ceiling. Bsmt walks out to rear yard-fully finished w Rec Room/Bedroom/Bath. Plenty of parking w a detached double car garage. Golf & Driving Range, Ocean Beaches, Parks, Pub, Shopping, Doctor, Daycare-within walking distance. WOW.

COMPLIMENTS OF

*Evon Mayer*

Price	\$1,024,800
Tax	\$3870.02/2017
Lot	3,132 sf
Size	2,240 sf
Bedrooms	4
Bathrooms	4