

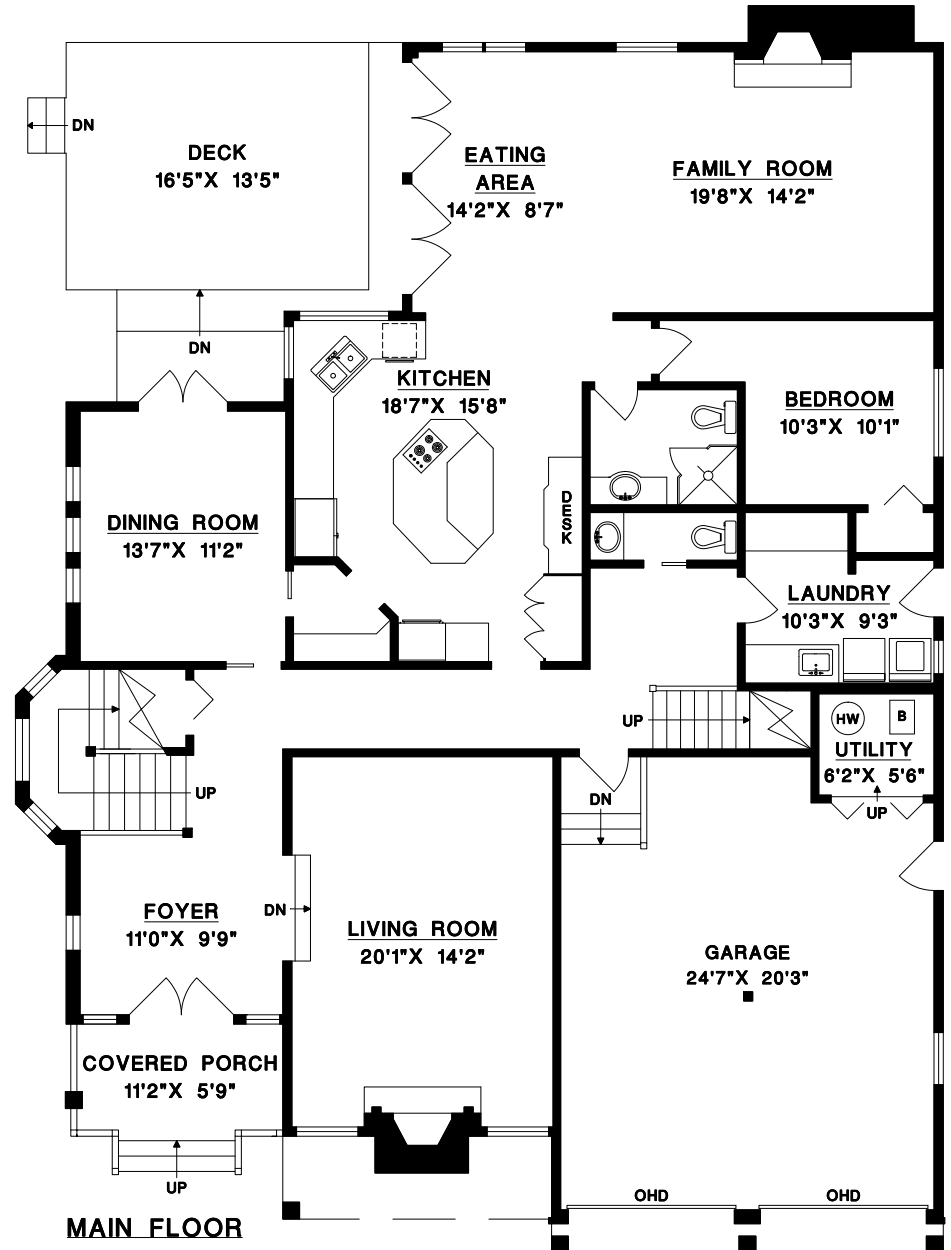
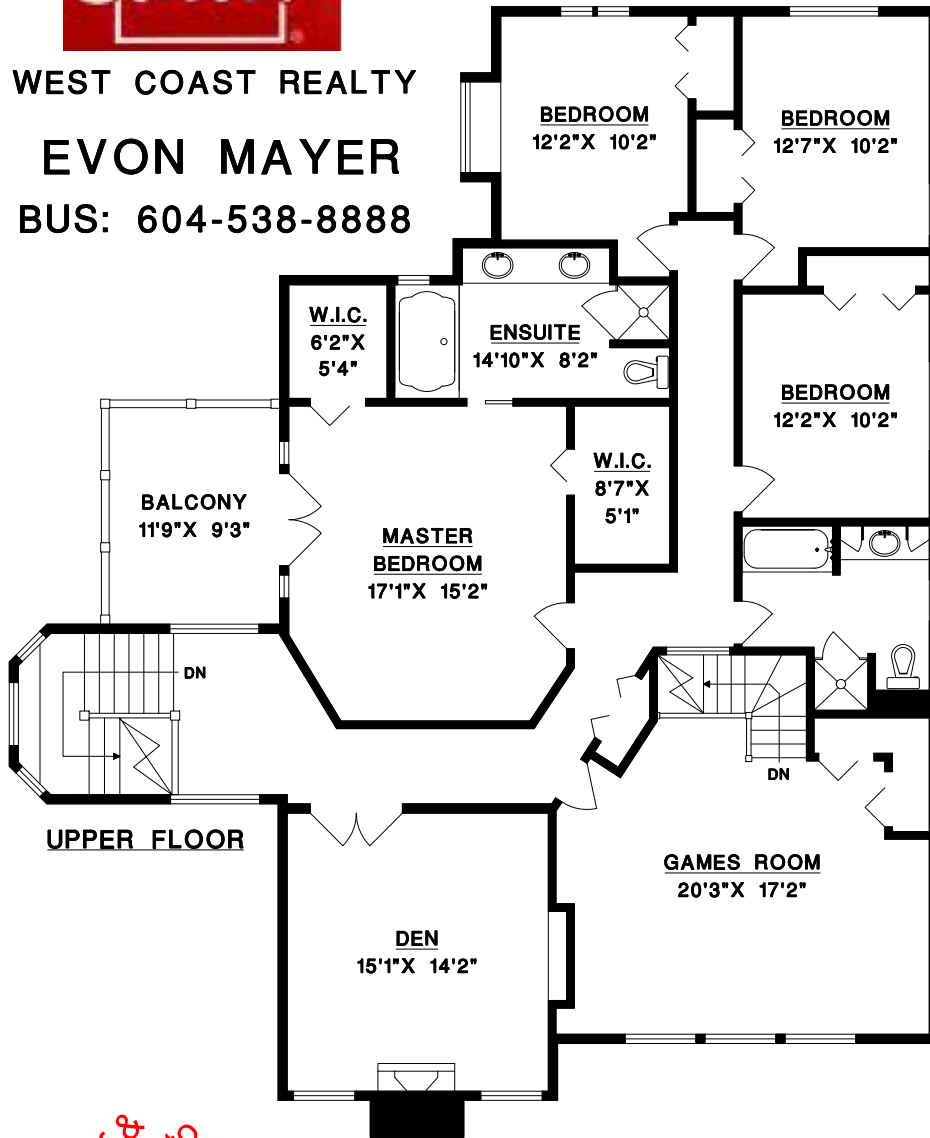


12625 OCEAN CLIFF DRIVE,
SURREY, B.C.

WEST COAST REALTY
EVON MAYER
BUS: 604-538-8888

UPPER FLOOR	2034	SQ. FT.
MAIN FLOOR	2042	SQ. FT.
FINISHED AREA	4076	SQ. FT.

GARAGE	510	SQ. FT.
BALCONY	109	SQ. FT.
DECK	308	SQ. FT.
PORCH	68	SQ. FT.



Please proof &
fax or email 'OK' to
604-539-0286
measures@telus.net
THANK YOU



1" = 6'
SCALE

MEASURE MASTERS
SURREY/WHITE ROCK
(604) 539-0285
DRAWN: APRIL 2011