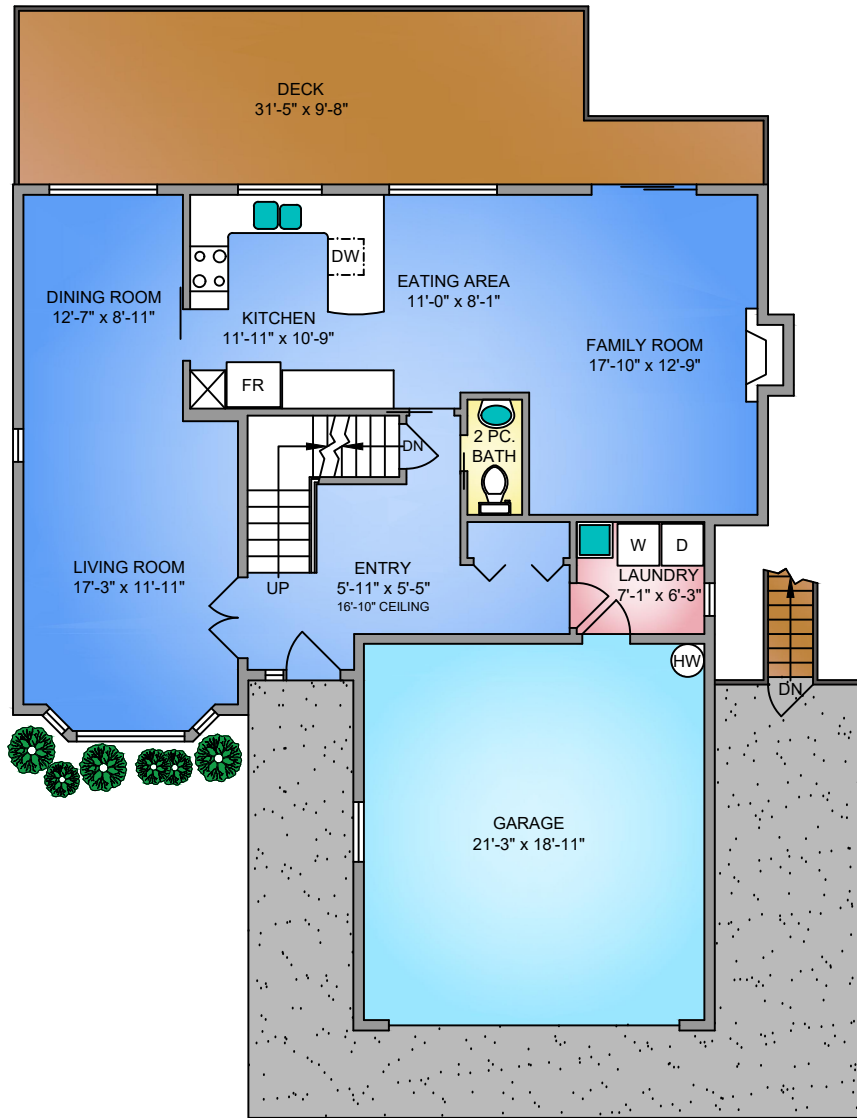
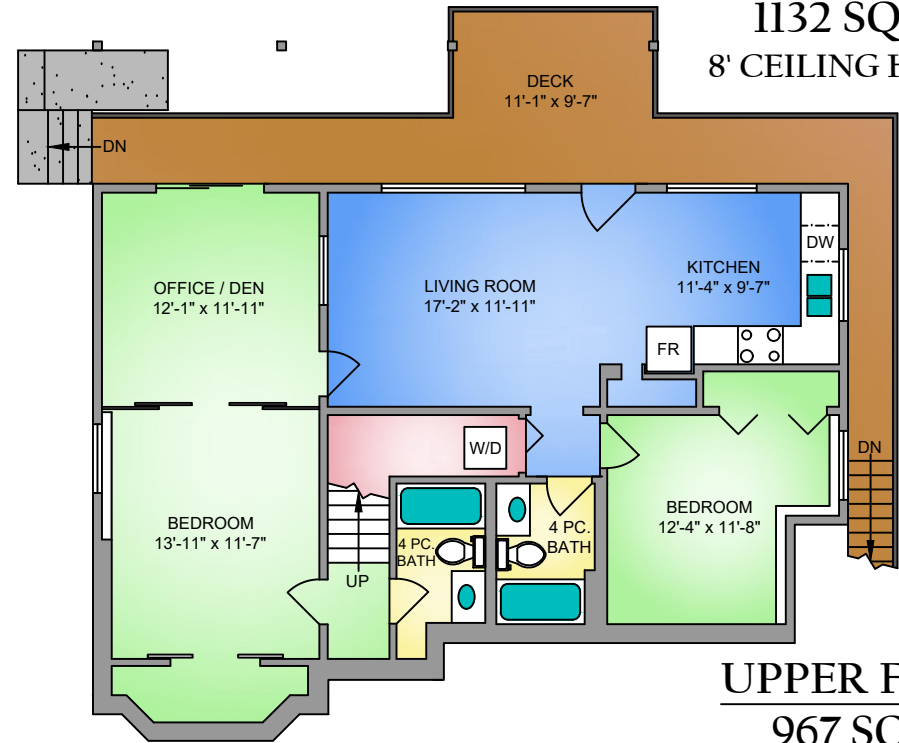


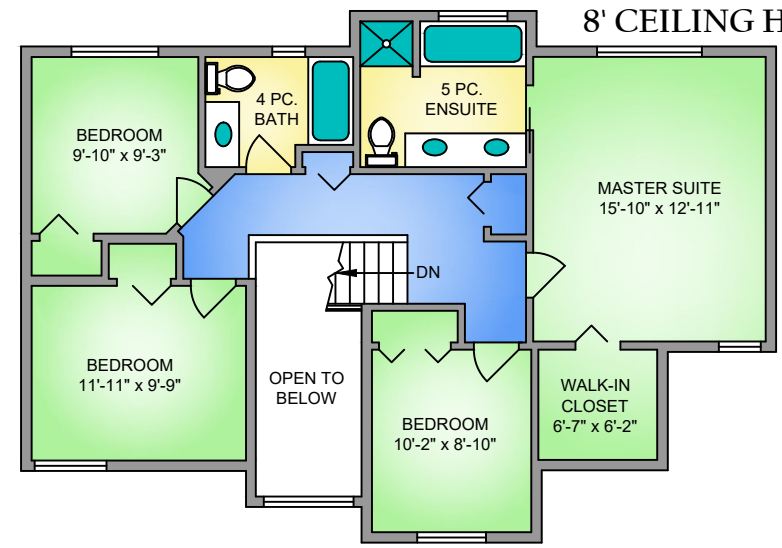
**MAIN FLOOR**  
1138 SQ. FT.  
8' CEILING HEIGHT



**LOWER FLOOR**  
1132 SQ. FT.  
8' CEILING HEIGHT



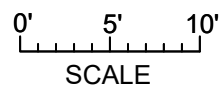
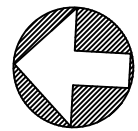
**UPPER FLOOR**  
967 SQ. FT.  
8' CEILING HEIGHT



2554 CRYSTALVIEW DRIVE  
APRIL 24, 2018  
PREPARED FOR THE EXCLUSIVE USE OF TIM AYRES  
PLANS MAY NOT BE 100% ACCURATE, IF CRITICAL BUYER TO VERIFY.

FLOOR	AREA (SQ. FT.)		
	FINISHED	GARAGE	DECK
MAIN	1138	432	339
UPPER	967	-	-
LOWER	1132	-	229
<b>TOTAL</b>	<b>3237</b>	<b>432</b>	<b>568</b>

NORTH



250-884-9753  
matt@propermeasure.com  
www.propermeasure.com