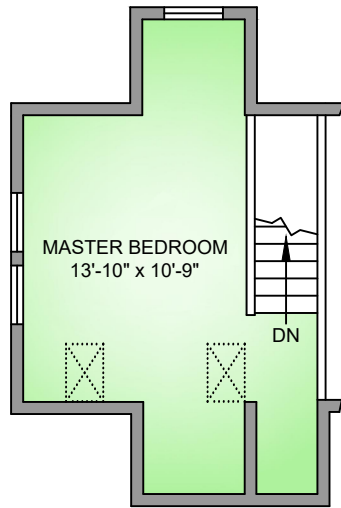
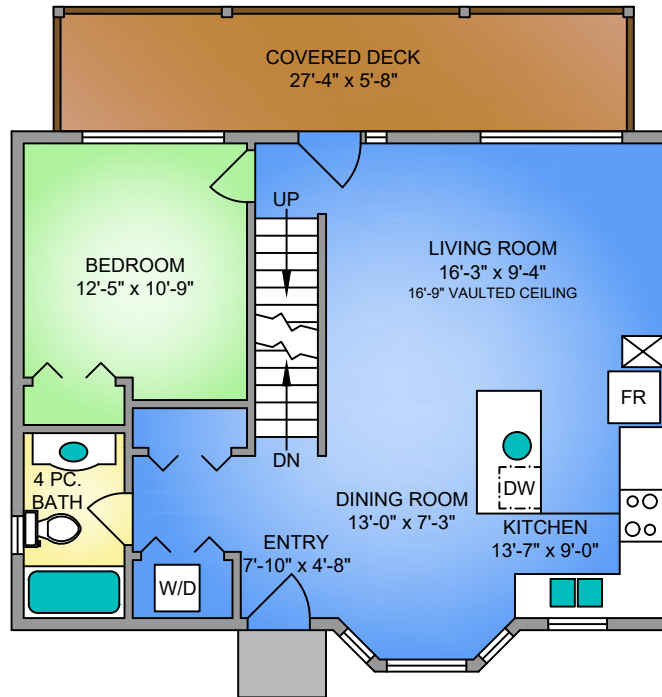


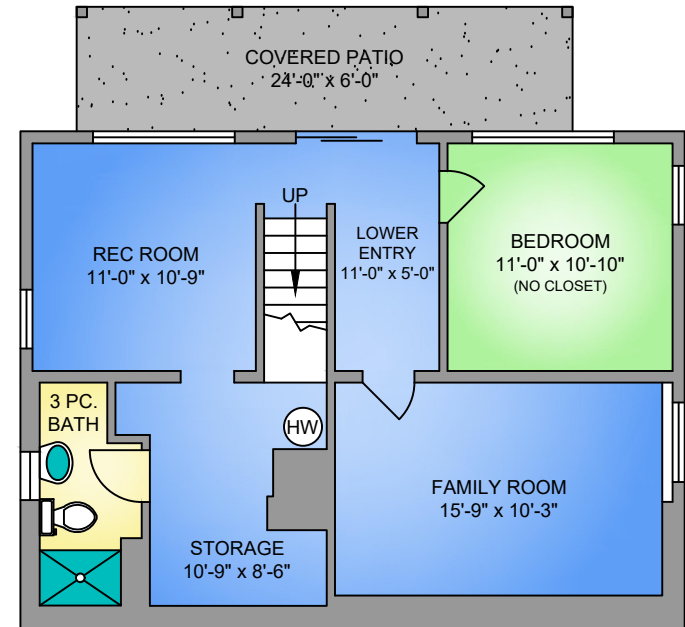
UPPER FLOOR
256 SQ. FT.



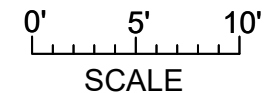
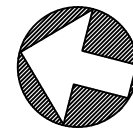
MAIN FLOOR
785 SQ. FT.



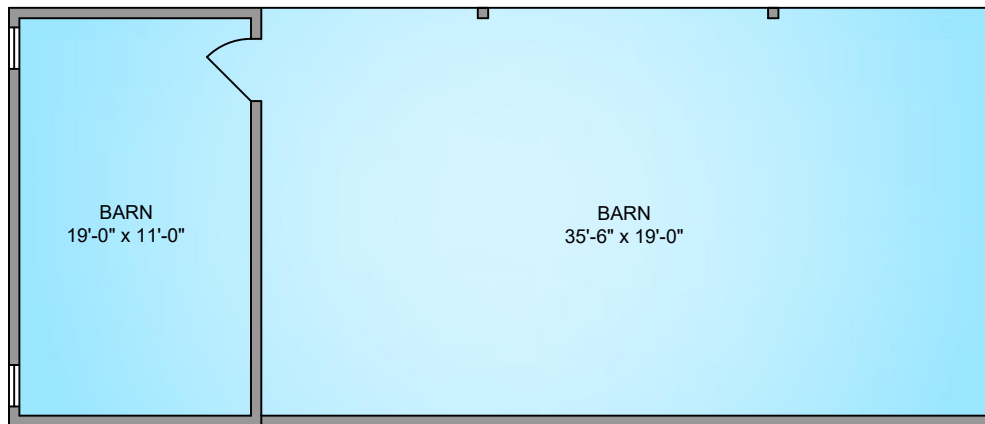
LOWER FLOOR
771 SQ. FT.
8' CEILING



NORTH



OUT BUILDING
960 SQ. FT.



3075 SARAH DRIVE MARCH 18, 2016 PREPARED FOR THE EXCLUSIVE USE OF TIM AYRES PLANS MAY NOT BE 100% ACCURATE, IF CRITICAL BUYER TO VERIFY.			
FLOOR	AREA (SQ. FT.)		
	FINISHED	UNFINISHED	DECK / PATIO
UPPER	256	-	-
MAIN	785	-	155
LOWER	771	-	144
TOTAL	1812	-	299
OUT BUILD.	-	960	-