



PATRICIA HOULIHAN
MACDONALD REALTY LTD.

2105 W. 38th Avenue,
Vancouver, B.C. V6M 1R8
Phone: 604-376-7653
phoulihan@vancouverviews.ca
www.vancouverviews.ca



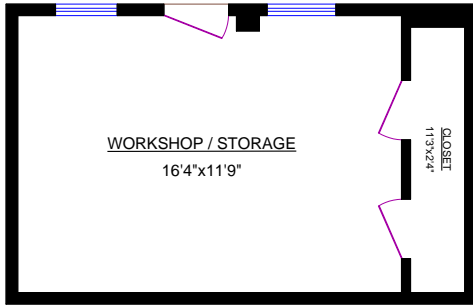
2678 PANORAMA DRIVE, NORTH VANCOUVER

TOTALS
Main Floor (finished): 887 sq.ft.
Lower Level (finished): 1,104 sq.ft.
TOTAL FINISHED: 1,991 sq.ft.

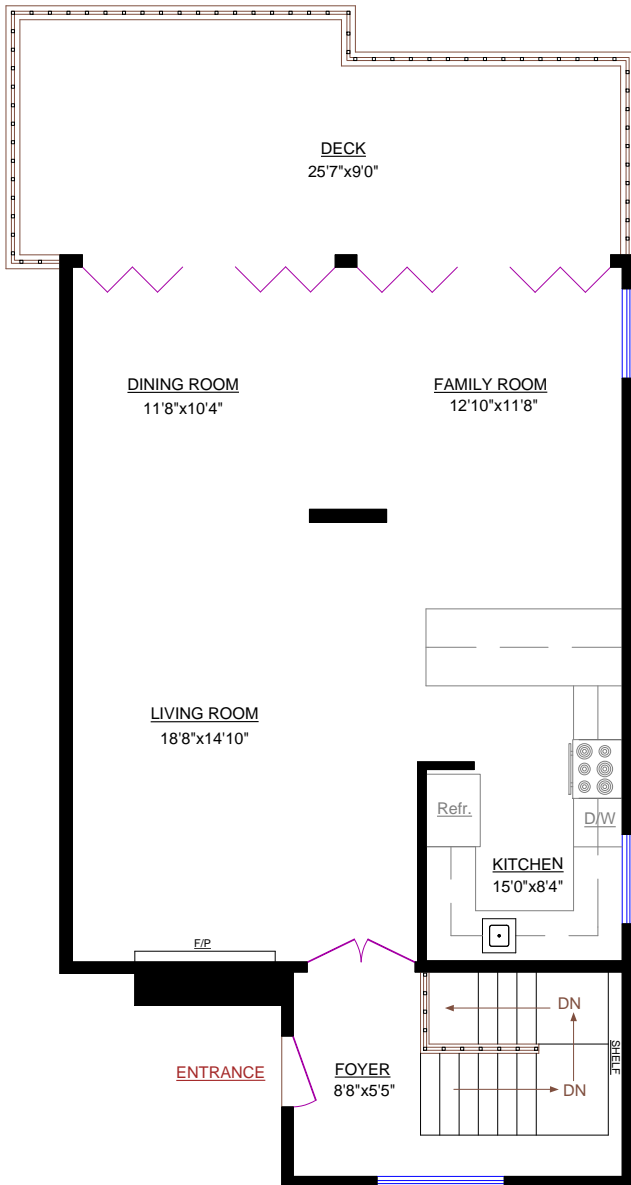
Lower Level (unfinished): 16 sq.ft.
TOTAL UNFINISHED: 16 sq.ft.

GRAND TOTAL: 2,007 sq.ft.

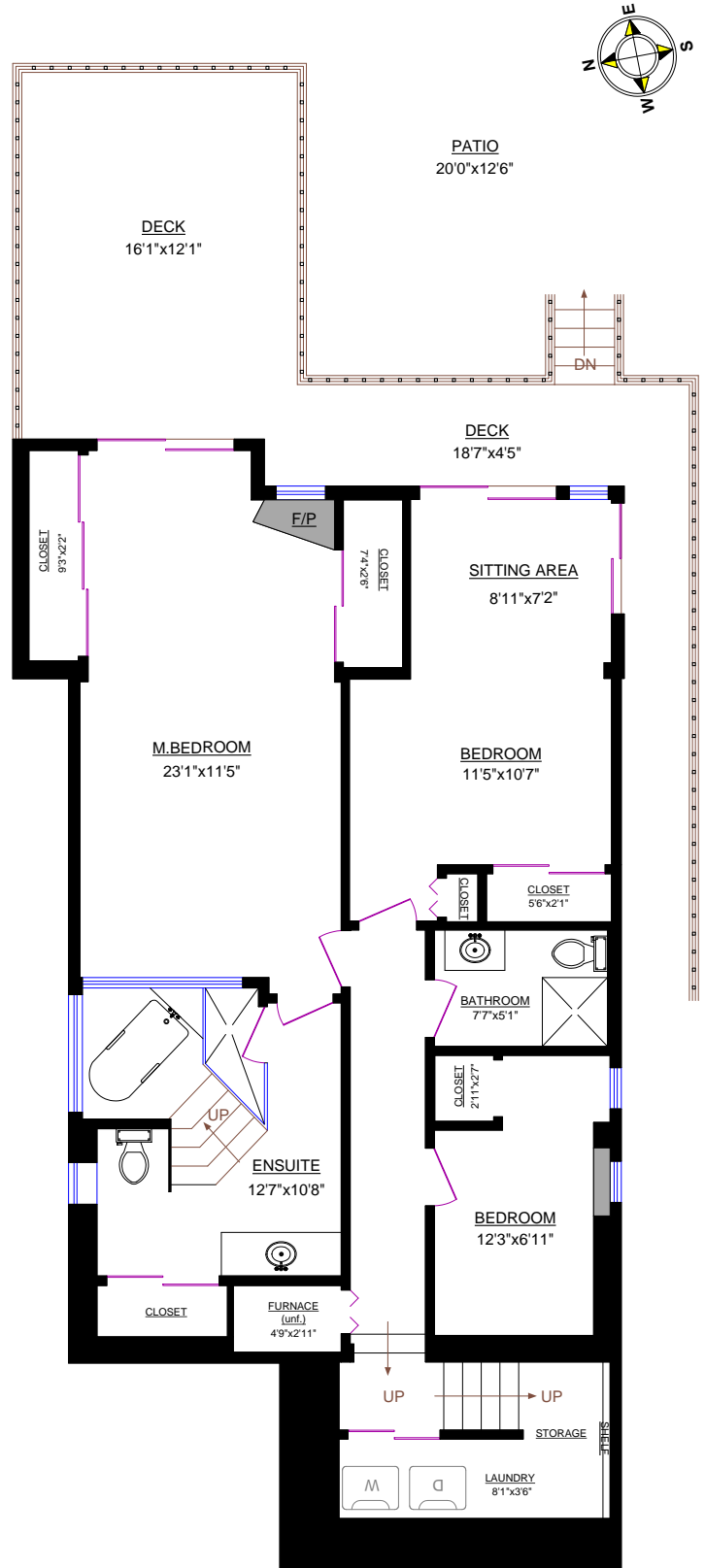
OTHER AREAS:
Deck (Main): 232 sq.ft.
Deck (Lower): 273 sq.ft.
Patio: 251 sq.ft.
Boat House Deck: 364 sq.ft.
Workshop/Storage: 224 sq.ft. (interior)
Boat House: 286 sq.ft. (interior)



WORKSHOP



MAIN FLOOR



LOWER LEVEL

