

2727 PANORAMA DRIVE  
NORTH VANCOUVER

MAIN FLOOR 739 SQ.FT.  
UPPER FLOOR 651 SQ.FT.  
LOWER FLOOR 616 SQ.FT.

TOTAL 2,006 SQ.FT.

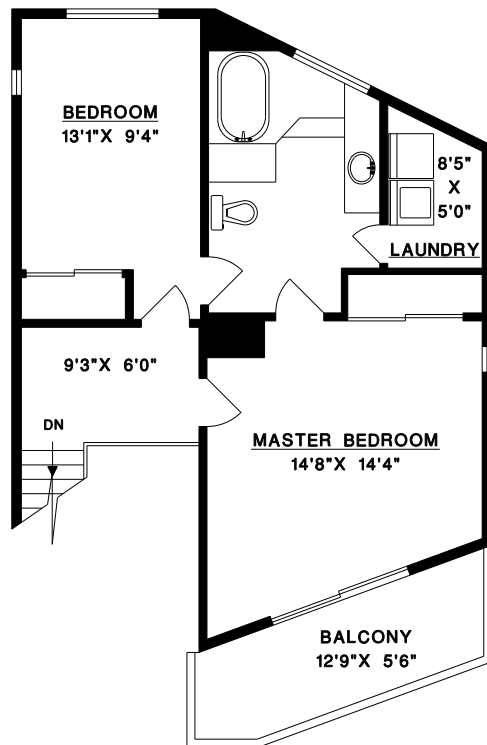
BALCONIES 248 SQ.FT.  
DECKS 743 SQ.FT.

PATRICIA HOULIHAN

Phone: 604-376-7653



MACDONALD REALTY LTD.  
2105 WEST 38TH AVENUE  
VANCOUVER, BC  
V6M 1R6

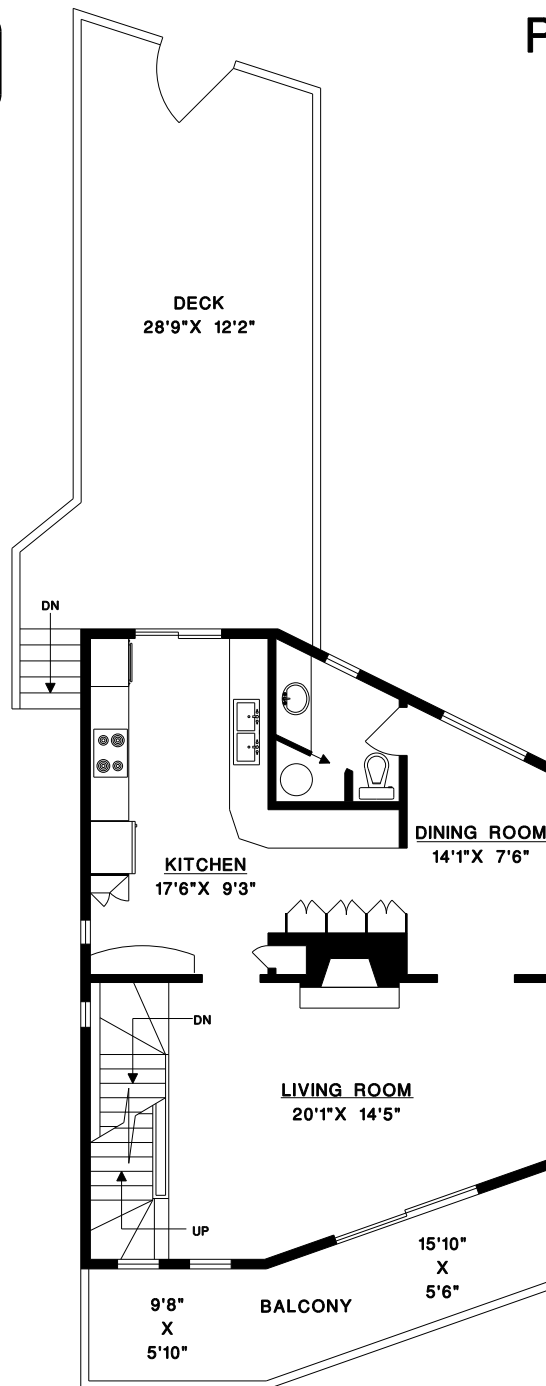


**UPPER FLOOR**

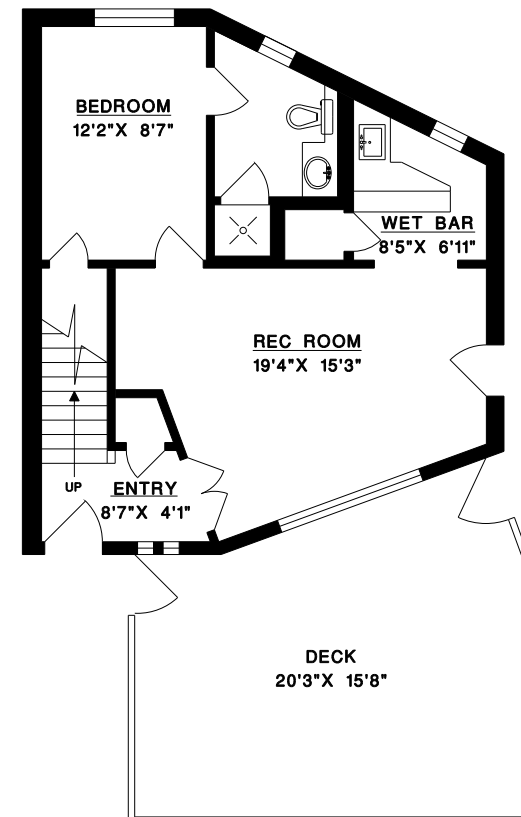


DATE: JUL/09  
FILE: 2019-02

**M** MEASURE MASTERS  
Floor Planning & Other Print Services  
604-929-8229



**MAIN FLOOR**



**LOWER FLOOR**