

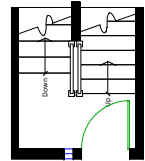
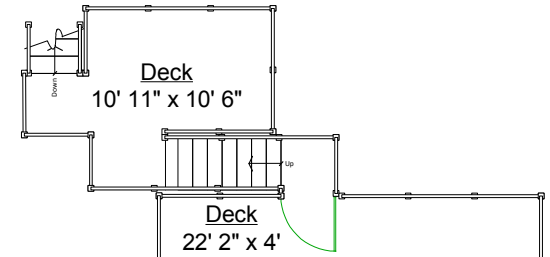
4158 Mt. Seymour Parkway, North Vancouver



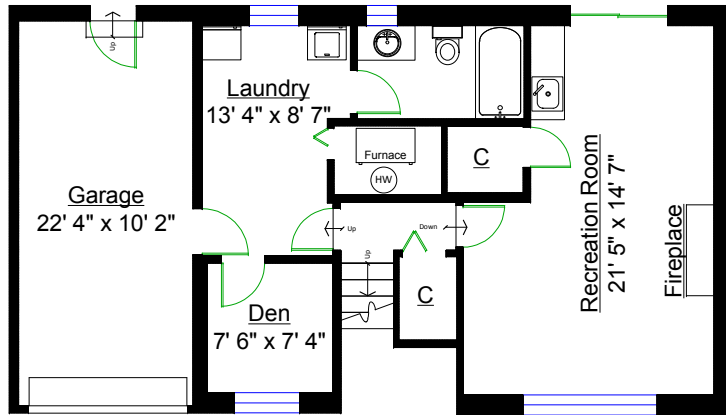
PRESTIGE REALTY
 Patricia Houlihan
 604-376-7653

Totals**

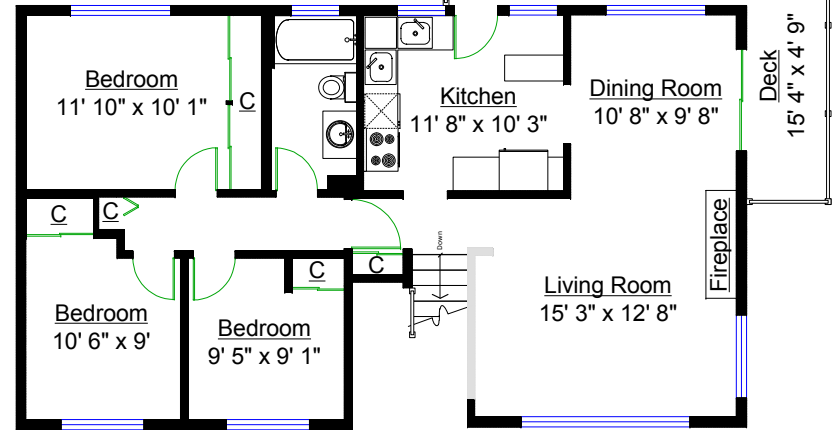
Main Level: 67 sq. ft.
 Upper Level: 995 sq. ft.
 Lower Level: 675 sq. ft.
 TOTAL(FIN.): 1,737 sq. ft.
 Closet(Unfin.): 16 sq. ft.
 Mechanical: 25 sq. ft.
 GRAND TOTAL: 1,778 sq. ft.



MAIN LEVEL



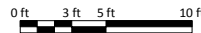
LOWER LEVEL



UPPER LEVEL

Other Areas

Garage: 252 sq. ft.
 Deck: 288 sq. ft.
 TOTAL: 540 sq. ft.



** Approx. based on interior measurements to exterior walls
 ** Total square footage not taken from original blueprints
 ** Includes under-height areas