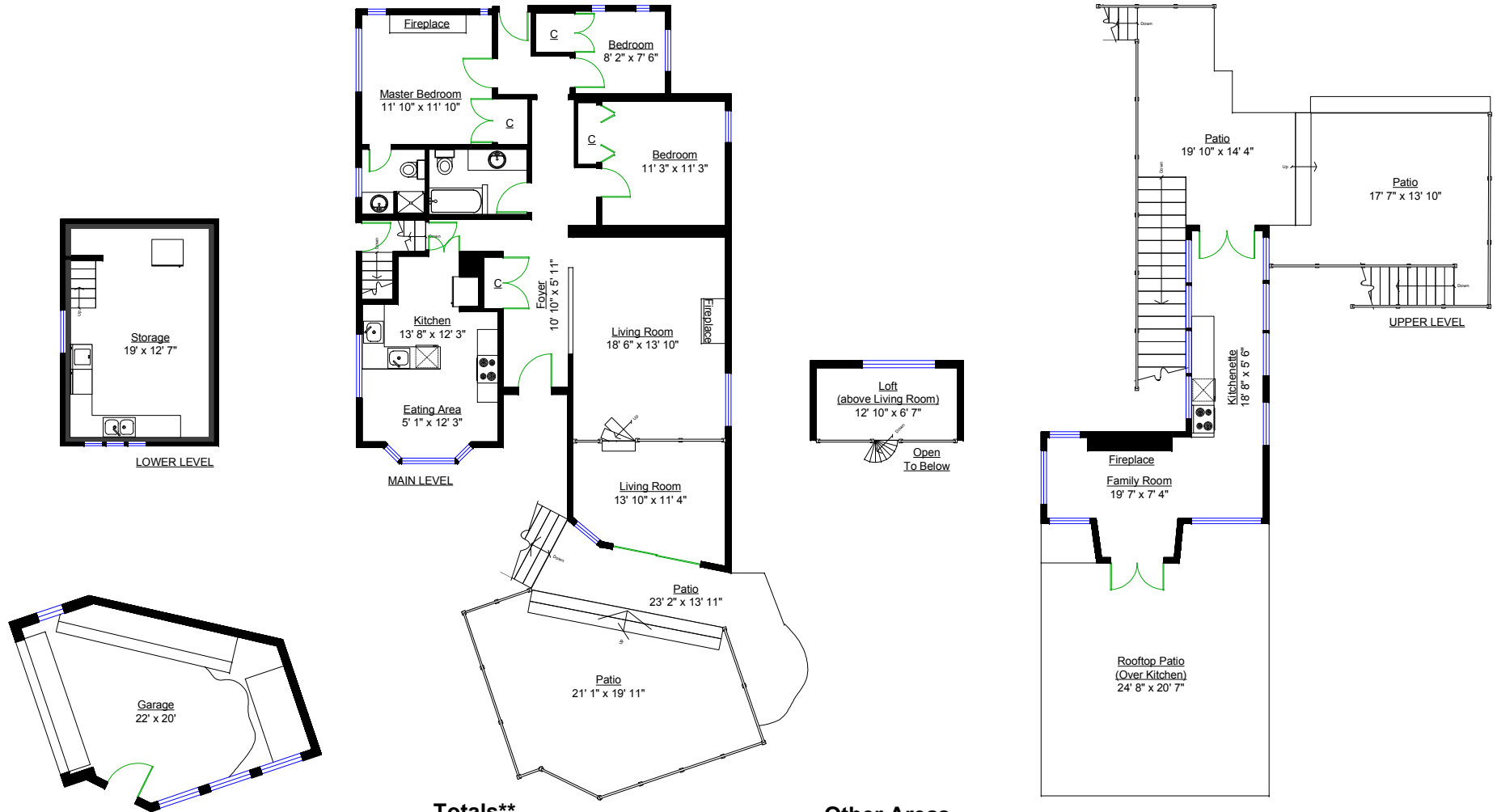




**PRESTIGE REALTY**  
 Patricia Houlihan  
 604-376-7653

# 4510 Epps Avenue North Vancouver



**Totals\*\***

Main Level:	1,434 sq. ft.
Upper Level:	340 sq. ft.
Lower Level:	293 sq. ft.
Loft:	100 sq. ft.
<b>TOTAL:</b>	<b>2,167 sq. ft.</b>

**Other Areas**

Garage:	374 sq. ft.
Front Patio:	502 sq. ft.
Rooftop Patio:	463 sq. ft.
Rear Patio:	463 sq. ft.
<b>TOTAL:</b>	<b>1,802 sq. ft.</b>

